

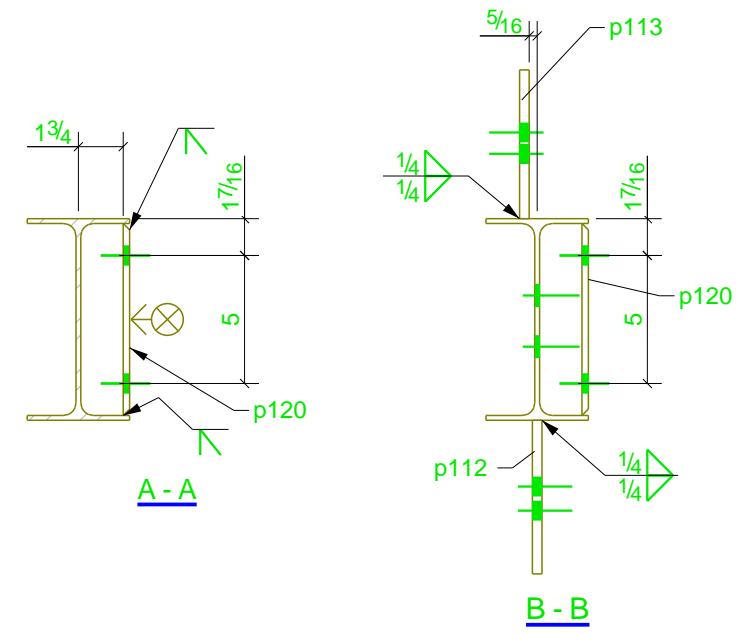
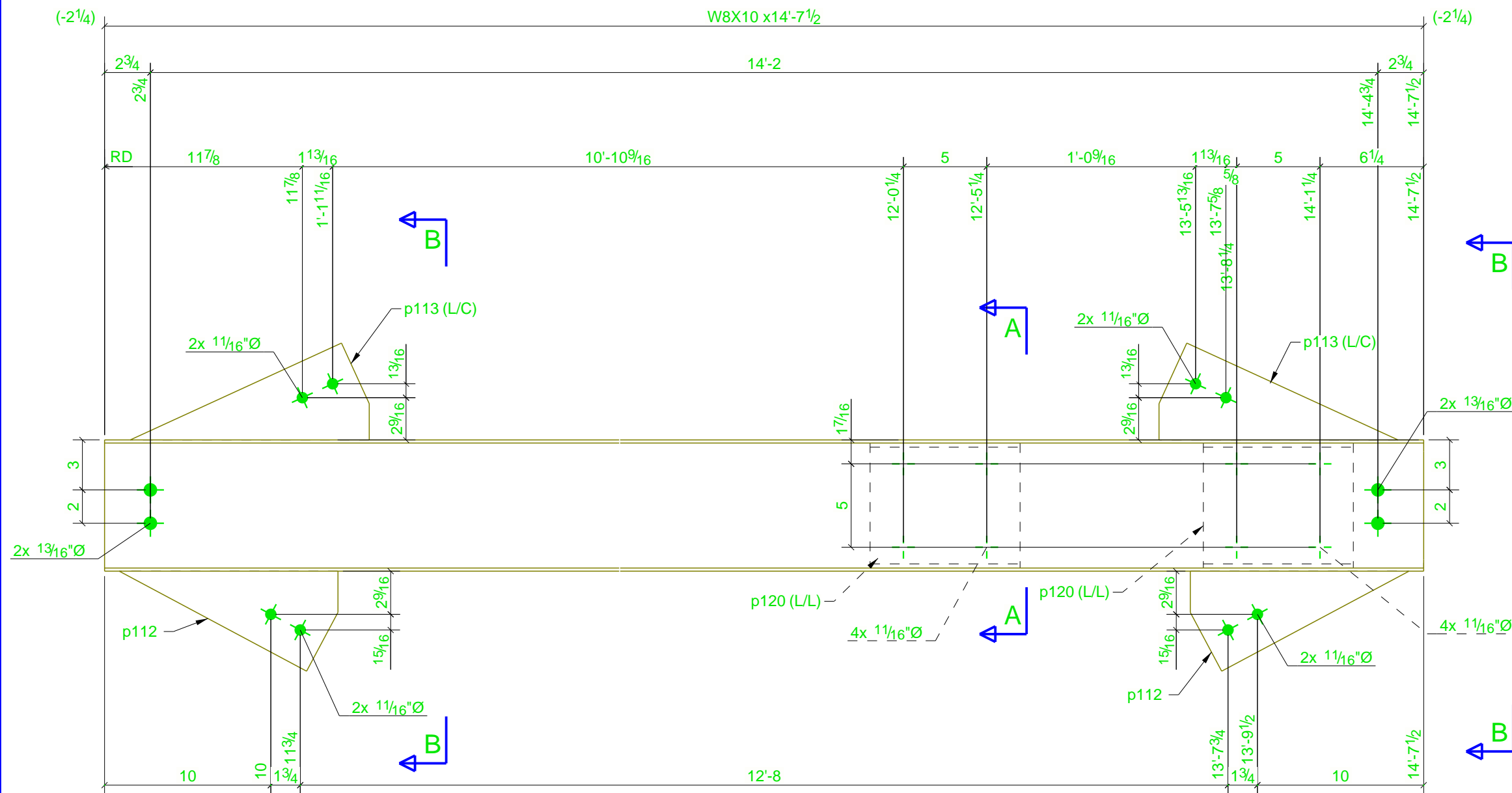
PARTS IN ASSEMBLY

ASSEMBLY: B115

QYT: 1
Length. (ft in): 14'-7 1/2"

PART MARK	SIZE	GRADE	N° Per Ass.	N° TOTAL	Length (ft in)	Area (ft ²)	Weight (lb)
B115	W8X10	A992	1	1	14'-7 1/2"	38.3	147.3
p112	FL3/8"X6"	A36	2	2	1'-1 1/8"	1.3	8.9
p113	PL3/8"X5 13/16"	A36	2	2	1'-2 3/8"	1.4	9.2
p120	FL1/4"X7 1/2"	A36	2	2	0'-9"	2.0	9.3
Total per Assembly						42.9	174.7
Total						42.9	174.7

SHOP NOTE:
 1. ALL MATERIALS THIS SHEET TO BE HOT-DIPPED GALVANIZED AFTER FABRICATION IN ACCORDANCE WITH APPLICABLE PROVISIONS OF ASTM A123, A143, A384, AND A385.
 2. VENT FOR HDG AS REQ'D. PLUG VENT HOLES AFTER HDG



1 REQUIRED AS DRAWN MARKED B115

PHASE: 1 - (1) REQ'D

FOR FABRICATION

Tekla Structures

				MARRICK				DRAWN	A.L	09.20.2022	CLIENT
				1215 SAINT JULIAN AVE. NORFOLK, VA 23504				CHECKED	JDB	10.11.2022	NAVY PORT OPS EAST COAST
0	A.L	10.11.2022	RELEASED FOR FABRICATION	PHONE NO.	JOB NO.	DWG NO.	REV	GENERAL NOTES RE-ENTRY CUTS = 1/2" RADIUS U.N.O. ALL WELDS 1/4" UNO ALL HOLES 13/16 DIAM UNO STEEL GRADE A992 TOTAL WEIGHT 174.7 lbs			PROJECT
A	A.L	09.20.2022	RELEASED FOR APPROVAL	757-275-7962	123223	B115	[0]				30 FT LHD STAND
REV	BY	DATE	REMARKS	NTS							SITE
											GROTON, CT