

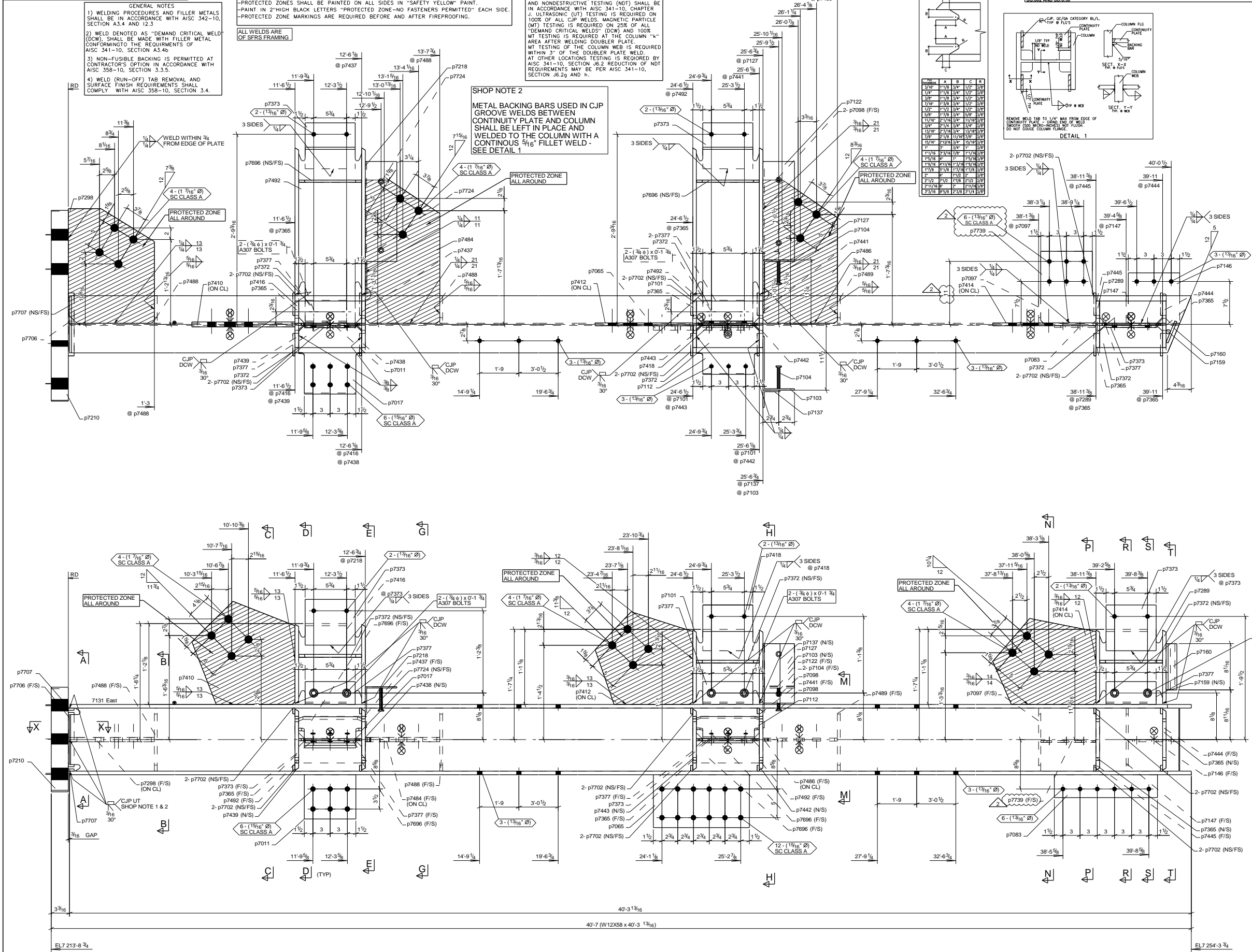
MARK	QTY	T.O.S	GRID REF	ZONE	REF.
7131	1	7254-334	B1BD	7	E7D

PROTECTED ZONE NOTES:
 -PROTECTED ZONES SHALL BE PAINTED ON ALL SIDES IN "SAFETY YELLOW" PAINT.
 -PAINT IN 2" HIGH BLACK LETTERS "PROTECTED ZONE-NO FASTENERS PERMITTED" EACH SIDE.
 -PROTECTED ZONE MARKINGS ARE REQUIRED BEFORE AND AFTER FIREPROOFING.

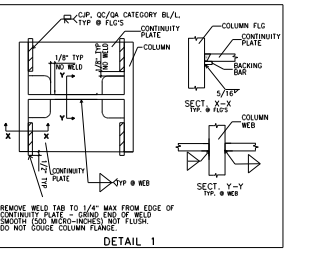
SHOP NOTE 1
 QUALITY CONTROL (SHOP AND FIELD QC), QUALITY ASSURANCE (SPECIAL INSPECTION QA) AND NONDESTRUCTIVE TESTING (NDT) SHALL BE IN ACCORDANCE WITH AISC 341-10, CHAPTER J. ULTRASONIC (UT) TESTING IS REQUIRED ON 100% OF ALL CJP WELDS. MAGNETIC PARTICLE (MT) TESTING IS REQUIRED ON 25% OF ALL "DEMAND CRITICAL WELDS" (DCW) AND 100% MT TESTING OF THE COLUMN WEBS IS REQUIRED WITHIN 3" OF THE DOUBLER PLATE WELD. AT OTHER LOCATIONS TESTING IS REQUIRED BY AISC 341-10, SECTION 6.2. REDUCTION OF NOT REQUIREMENTS MAY BE PER AISC 341-10, SECTION J6.2g AND H.

SHOP NOTE 2
 METAL BACKING BARS USED IN CJP GROOVE WELDS BETWEEN CONTINUITY PLATE AND COLUMN SHALL BE LEFT IN PLACE AND WELDED TO THE COLUMN WITH A CONTINUOUS 5/16" FILLET WELD - SEE DETAIL 1

FABRICATOR NOTE:
 SEISMIC FORCE RESISTING SYSTEM (SFRS)
 FOR MEMBERS INCLUDED IN THE SEISMIC FORCE RESISTING SYSTEM (SFRS) REFER TO SG.002 AND SD.6.50



NO.	DESCRIPTION	QTY	UNIT
1	PL 1/2" x 12" x 12"	1	EA
2	PL 1/2" x 12" x 12"	1	EA
3	PL 1/2" x 12" x 12"	1	EA
4	PL 1/2" x 12" x 12"	1	EA
5	PL 1/2" x 12" x 12"	1	EA
6	PL 1/2" x 12" x 12"	1	EA
7	PL 1/2" x 12" x 12"	1	EA
8	PL 1/2" x 12" x 12"	1	EA
9	PL 1/2" x 12" x 12"	1	EA
10	PL 1/2" x 12" x 12"	1	EA
11	PL 1/2" x 12" x 12"	1	EA
12	PL 1/2" x 12" x 12"	1	EA
13	PL 1/2" x 12" x 12"	1	EA
14	PL 1/2" x 12" x 12"	1	EA
15	PL 1/2" x 12" x 12"	1	EA
16	PL 1/2" x 12" x 12"	1	EA
17	PL 1/2" x 12" x 12"	1	EA
18	PL 1/2" x 12" x 12"	1	EA
19	PL 1/2" x 12" x 12"	1	EA
20	PL 1/2" x 12" x 12"	1	EA
21	PL 1/2" x 12" x 12"	1	EA
22	PL 1/2" x 12" x 12"	1	EA
23	PL 1/2" x 12" x 12"	1	EA
24	PL 1/2" x 12" x 12"	1	EA
25	PL 1/2" x 12" x 12"	1	EA
26	PL 1/2" x 12" x 12"	1	EA
27	PL 1/2" x 12" x 12"	1	EA
28	PL 1/2" x 12" x 12"	1	EA
29	PL 1/2" x 12" x 12"	1	EA
30	PL 1/2" x 12" x 12"	1	EA
31	PL 1/2" x 12" x 12"	1	EA
32	PL 1/2" x 12" x 12"	1	EA
33	PL 1/2" x 12" x 12"	1	EA
34	PL 1/2" x 12" x 12"	1	EA
35	PL 1/2" x 12" x 12"	1	EA
36	PL 1/2" x 12" x 12"	1	EA
37	PL 1/2" x 12" x 12"	1	EA
38	PL 1/2" x 12" x 12"	1	EA
39	PL 1/2" x 12" x 12"	1	EA
40	PL 1/2" x 12" x 12"	1	EA
41	PL 1/2" x 12" x 12"	1	EA
42	PL 1/2" x 12" x 12"	1	EA
43	PL 1/2" x 12" x 12"	1	EA
44	PL 1/2" x 12" x 12"	1	EA
45	PL 1/2" x 12" x 12"	1	EA
46	PL 1/2" x 12" x 12"	1	EA
47	PL 1/2" x 12" x 12"	1	EA
48	PL 1/2" x 12" x 12"	1	EA
49	PL 1/2" x 12" x 12"	1	EA
50	PL 1/2" x 12" x 12"	1	EA



BILL OF MATERIAL

ASSEMBLY MARK	SHIPPING MARK	ASSY MARK	NO. REQD	DESCRIPTION	LENGTH	GRADE	WEIGHT	REMARKS
7131			1	W26X8	40'-3 13/16"	A992	2270	BC1E
p7011			1	PL1/2" X 34"	0'-9"	A572-GR.50	10	CS2E
p7017			1	PL1/2" X 17"	1'-0 13/16"	A572-GR.50	18	CS2E
p7065			1	PL3/8" X 14"	1'-4 3/4"	A572-GR.50	33	CS2E
p7083			1	PL5/8" X 4"	1'-6"	A36	6	CS2E
p7097			1	PL3/8" X 13 1/2"	0'-10 15/16"	A36	5	CS2E
p7098			2	STD. 10.0A	0'-4"	A108	1	CS2E
p7101			1	W10X50	1'-0 15/16"	A992	50	CS2E
p7103			1	PL1/2" X 30"	1'-2 7/16"	A36	11	BS11
p7104			2	STD. 10.0A	0'-4"	A108	1	CS2E
p7112			1	PL5/8" X 10"	0'-11"	A36	8	CS2E
p7122			1	PL1/2" X 31 1/2"	1'-10 15/16"	A36	18	BS11
p7127			1	PL1/2" X 30"	1'-2 3/16"	A36	8	BS11
p7137			1	L3X10X4	0'-10 3/8"	A36	4	CS2E
p7146			1	PL5/8" X 13 1/2"	0'-9"	A36	7	CS2E
p7159			1	PL3/8" X 10"	0'-10 15/16"	A36	5	CS2E
p7160			1	PL3/8" X 10"	0'-8 1/16"	A36	3	CS2E
p7210			1	PL3/8" X 10"	2'-9 3/16"	A572-GR.50	508	CS2E
p7218			1	PL1/2" X 31 1/2"	1'-11"	A36	18	BS11
p7289			1	W10X50	1'-0 15/16"	A992	50	CS2E
p7298			1	PL3/8" X 15"	1'-8"	A572-GR.50	58	CS2E
p7365			4	PL3/8" X 10"	0'-10 5/8"	A572-GR.50	31	CS2E
p7372			6	PL1/2" X 10"	0'-10 15/16"	A572-GR.50	35	CS2E
p7373			4	PL3/8" X 10"	0'-8 3/4"	A36	30	CS2E
p7377			5	PL3/8" X 10"	0'-8 3/4"	A36	19	CS2E
p7410			1	PL1/2" X 13 1/2"	1'-8 9/16"	A572-GR.50	63	BC2E
p7412			1	PL1/2" X 31 1/2"	1'-7"	A572-GR.50	31	BC2E
p7414			1	PL1/2" X 30"	1'-7"	A572-GR.50	31	BC2E
p7416			1	W10X50	1'-1 15/16"	A992	54	CS2E
p7418			1	PL3/8" X 10"	0'-8 3/4"	A36	7	CS2E
p7437			1	PL3/8" X 10"	0'-10 5/8"	A572-GR.50	8	CS2E
p7438			1	PL3/8" X 10"	0'-10 5/8"	A572-GR.50	8	CS2E
p7439			1	PL3/8" X 10"	0'-10 5/8"	A572-GR.50	8	CS2E
p7441			1	PL3/8" X 10"	0'-10 5/8"	A572-GR.50	8	CS2E
p7442			1	PL3/8" X 10"	0'-10 5/8"	A572-GR.50	8	CS2E
p7443			1	PL3/8" X 10"	0'-10 5/8"	A572-GR.50	8	CS2E
p7445			1	PL3/8" X 10"	0'-10 5/8"	A572-GR.50	8	CS2E
p7484			1	PL1/2" X 17"	2'-1"	A572-GR.50	63	CS2E
p7486			1	PL1/2" X 17"	2'-1"	A572-GR.50	41	CS2E
p7488			2	PL1/2" X 31 1/2"	0'-10 15/16"	A572-GR.50	15	CS2E
p7489			1	PL1/2" X 31 1/2"	0'-10 15/16"	A572-GR.50	7	CS2E
p7492			2	W10X50	2'-6 9/16"	A992	212	CS2E
p7696			4	PL3/8" X 10"	0'-10 15/16"	A572-GR.50	18	CS2E
p7702			24	PL3/8" X 10"	0'-3 15/16"	A36	10	CS2E
p7706			1	PL3/8" X 10"	0'-9 1/2"	A36	1	CS2E
p7707			2	PL3/8" X 10"	0'-11"	A36	2	CS2E
p7724			2	STD. 10.0A	0'-4"	A108	1	CS2E
p7739			1	PL5/8" X 50"	1'-0 9/16"	A36	10	CS2E
TOTAL =							3837	

BOLT SUMMARY - QTY'S ARE FOR ONE ASSEMBLY ONLY

ASSEMBLY	NO. REQD	DIA.	LENGTH	WORKSHOP	BOLT GRADE	REMARKS
7131	10	3/4"	1 3/4"	Workshop	A307PLAINHEX	
7131	12	1 1/8"	3 1/2"	Site	AR80TPLAINHEAVY HEX	SC CLASS A
7131	12	1 1/8"	3 3/4"	Site	AR80TPLAINHEAVY HEX	SC CLASS A

WORK THIS DWG WITH-7131-1

03/11/2024	BASE PLATE REVISE PER BUILT UP DIM (RE-IF)
10/16/2023	RE-IF, DIMS AND NOTE ADDED
10/06/2023	RELEASED FOR FABRICATION
04/18/2023	ISSUED FOR APPROVAL

NO BACK CHARGES WILL BE ACCEPTED WITHOUT PRIOR AUTHORIZATION IN WRITING

NOTE:

MATERIAL:	A992 (U.O.)	SPC:	SP-3
BOLT:	A325 (U.O.)	WELD:	3/16" (U.O.)
SOLE SIZE:	13/16"	ELECTRODE:	E7018 OR E71T

ALLIED STEEL

Anatomie Steel Detailing IRON

TEL: (604) 428-4431
 FAX: (604) 429-1393
 www.anatomieiron.com

JOB NAME & LOCATION:
 VP2 - YELLOWSTONE CLUB VILLAGE PHASE 2 - BLDG.5
 1 Yellowstone Club Trail, Big Sky, MT 59716

ARCH: Hart Howerton
 ENGR: DCI - Engineers
 CONTR: TBD

REF.	NO.	DESCRIPTION	DATE	BY	CHECKED BY	DATE
REF.	E703					
DRAWN BY:	RNP	04/17/2023				
CHECKED BY:	RHB	04/17/2023				

JOB NO: 2252
 SHEET TITLE: BRB COLUMN
 SHEET NO: 7131

1 BRB COLUMN MARK: 7131

Profile	d	b	t	w	k
W12X58	12 1/4"	10"	5/8"	3/8"	1 1/2"

PAINT TYPE

NO PAINT

SC CLASS A

SC CLASS B

SC CLASS C

SC CLASS D

SC CLASS E

SC CLASS F

SC CLASS G

SC CLASS H

SC CLASS I

SC CLASS J

SC CLASS K

SC CLASS L

SC CLASS M

SC CLASS N

SC CLASS O

SC CLASS P

SC CLASS Q

SC CLASS R

SC CLASS S

SC CLASS T

SC CLASS U

SC CLASS V

SC CLASS W

SC CLASS X

SC CLASS Y

SC CLASS Z