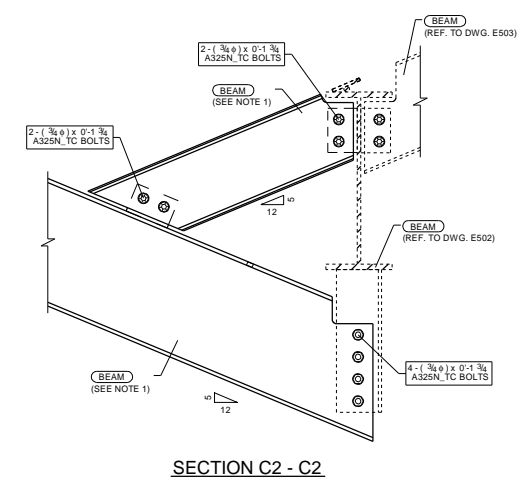
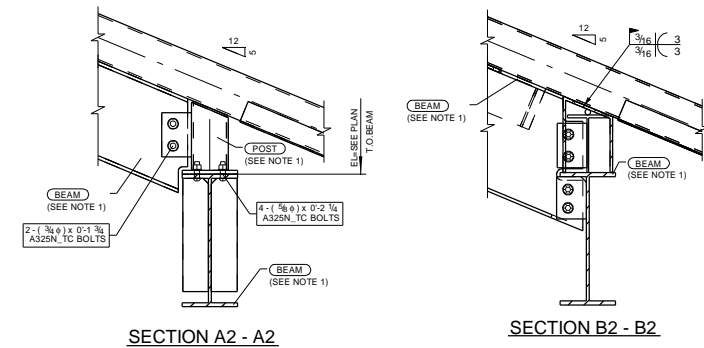


GENERAL NOTES:

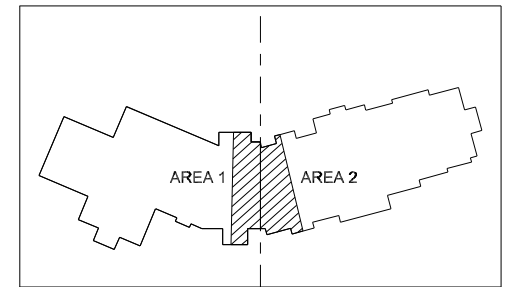
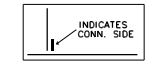
- ERECT BEAMS WITH MARK IN UPRIGHT POSITION AT SAME END AS SHOWN ON PLANS.
- ERECT BRACING WITH MARK AT SAME END AS SHOWN ON PLANS.
- FOR FIELD BOLT GRADES, SEE POINT TO POINT BOLT LIST, U.N.O.
- WELD SIZES AND LENGTHS CALLED FOR ON THE DRAWINGS ARE THE NET EFFECTIVE REQUIRED (INCREASE WELD SIZE IF GAPS EXIST AT THE FAYING SURFACE).
- ELECTRODES FOR FIELD WELDS SHALL BE E70XX.
- ("XX-XX") INDICATES EL. TOP OF STEEL
- ("S") INDICATES SLOPED BEAMS.



FIELD BOLT CONN. NOTE:

STD. CONN. BOLTS ON THIS PAGE ARE 3/4\"/>

- (A) - 7/8\"/>
- (B) - 1 3/8\"/>
- (C) - 1 3/8\"/>
- (D) - 1 1/8\"/>
- (E) - 5/8\"/>
- (F) - 3/4\"/>
- (G) - 1 1/4\"/>
- (H) - 3/4\"/>
- (J) - 3/4\"/>
- (K) - 7/8\"/>



KEY PLAN
ZONE 5 - ROOF

PROJECT NORTH

ROOF FRAMING PLAN - AREA 2 - ZONE 9

REF: S5.2.4.2

NOTE 1:
REFER TO PLAN FOR MARKS

WORK THIS DWG WITH: E9

<p>REVISIONS:</p> <ul style="list-style-type: none"> ▲ 04/05/2024 RE-ISSUED FOR CONSTRUCTION ▲ 10/06/2023 RELEASED FOR CONSTRUCTION ▲ 04/25/2023 ISSUED FOR APPROVAL <p>NO BACK CHARGES WILL BE ACCEPTED WITHOUT PRIOR AUTHORIZATION IN WRITING</p> <p>NOTE E:</p>		
<p>REF: S5.2.4.2</p> <p>DRAWN BY: HS 04/25/2023</p> <p>CHECKED BY: BB 04/25/2023</p> <p>ROOF FRAMING PLAN - AREA 2 - ZONE 9</p>		
<p>JOB NAME & LOCATION: VP2 - YELLOWSTONE CLUB VILLAGE PHASE 2 - BLDG.5 1 Yellowstone Club Trail, Big Sky, MT59716</p>		
<p>ARCH: Hart Howerton</p> <p>ENGR: DCI - Engineers</p> <p>CONTR: TBD</p>		
<p>JOB NO. 2252</p> <p>DWG. NO. E903</p>		