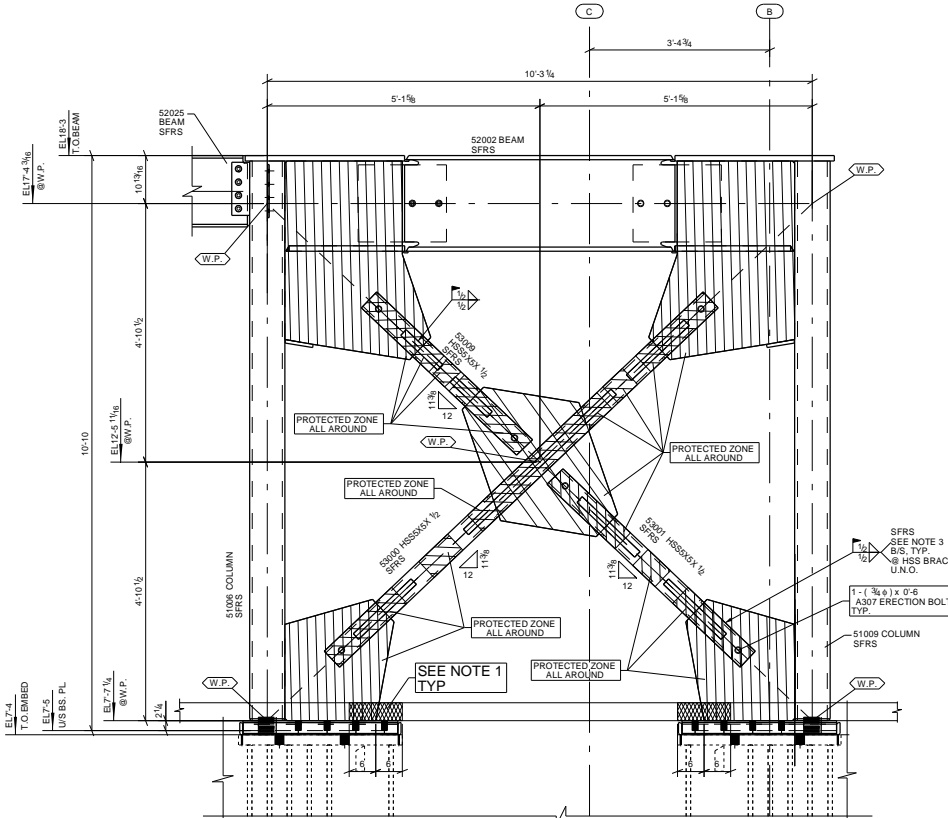
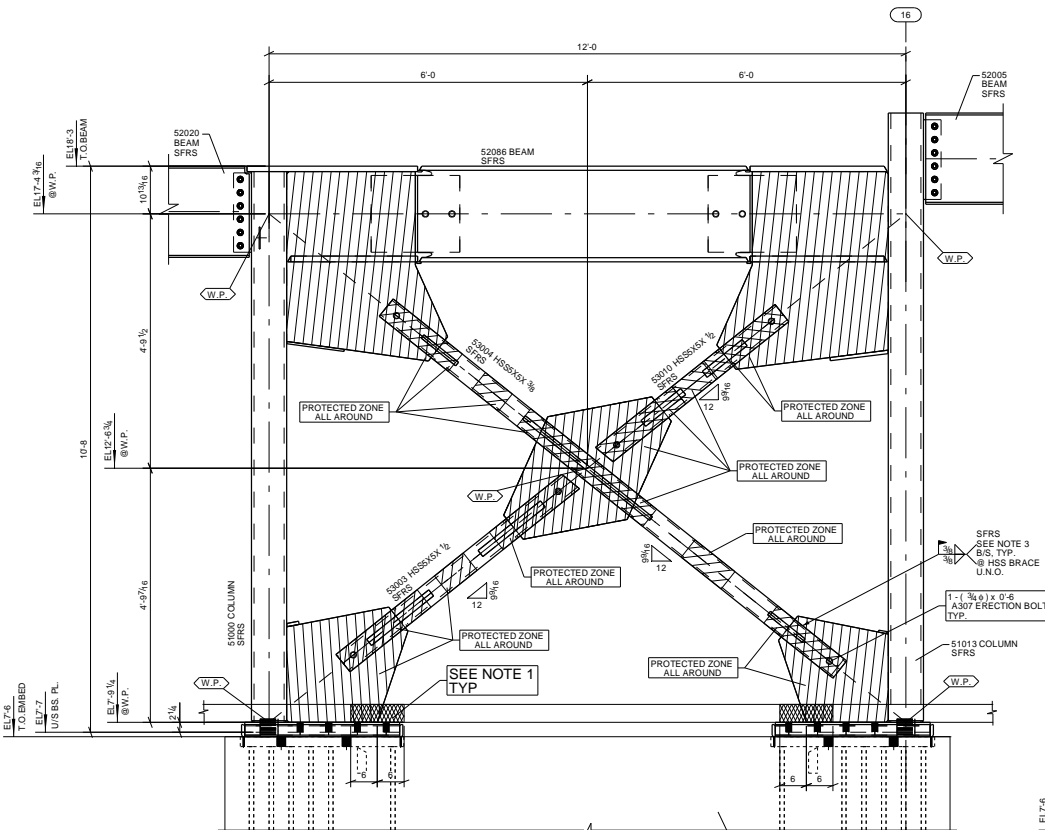


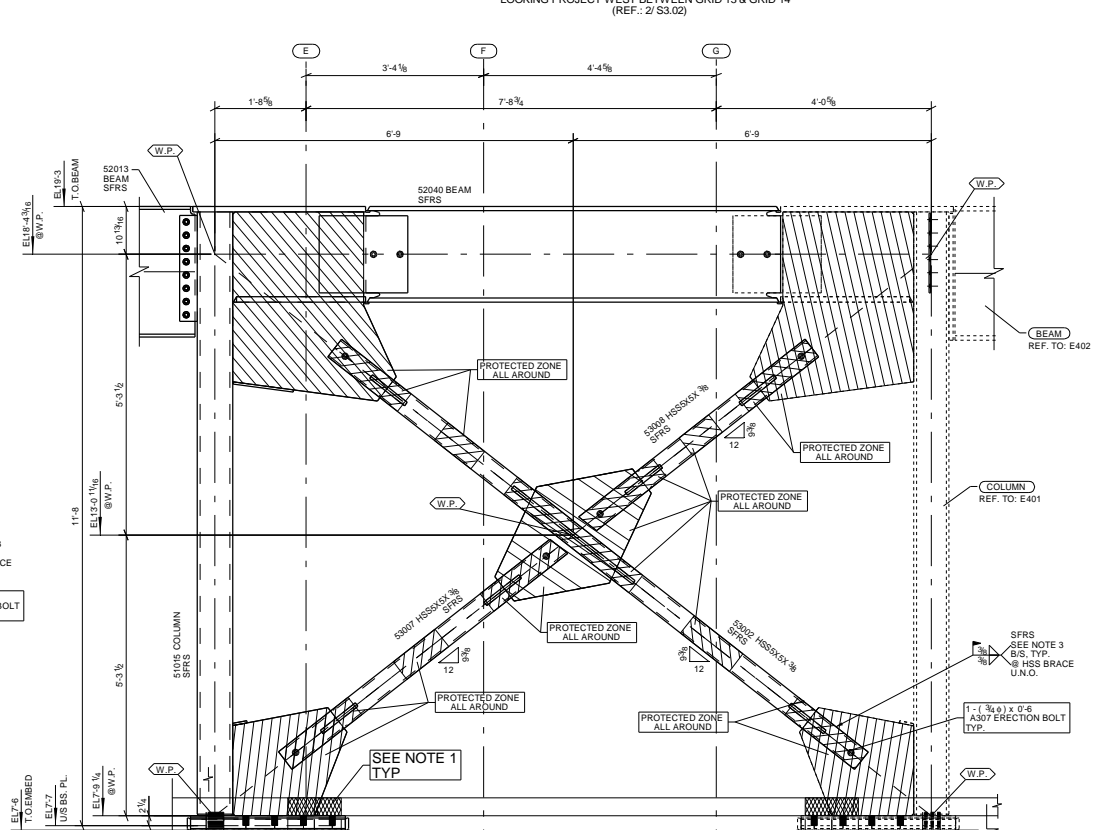
1/E501 & E503  
ELEVATION VIEW  
LOOKING PROJECT NORTH NEAR GRID D  
(REF.: 5/ S3.02)



2/E501 & E503  
ELEVATION VIEW  
LOOKING PROJECT WEST BETWEEN GRID 13 & GRID 14  
(REF.: 2/ S3.02)



3/E502 & E504  
ELEVATION VIEW  
LOOKING PROJECT NORTH NEAR GRID D  
(REF.: 10/ S3.02)



4/E502 & E504  
ELEVATION VIEW  
LOOKING PROJECT EAST @ GRID 18  
(REF.: 3/ S3.02)

ELEVATION VIEWS (BRACING) - ZONE 5

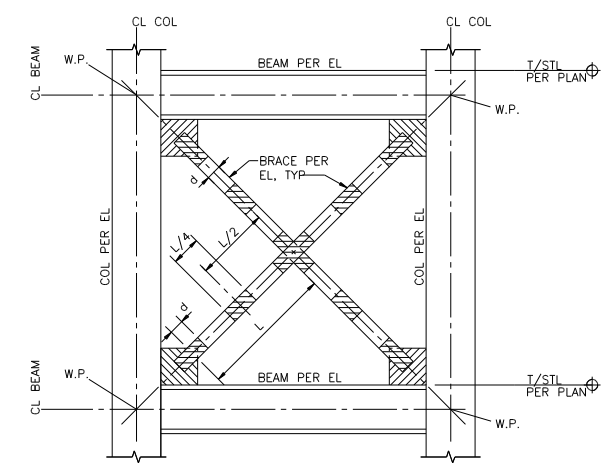
REF: VARIOUS

NOTE 1:  
3" W COMPRESSIBLE  
FOAM EA SIDE OF GUSSET  
EDGE AT EA LEVEL WHERE  
SLAB OCCURS TYP.

- GENERAL NOTES:
- ERECT BEAMS WITH MARK IN UPRIGHT POSITION AT SAME END AS SHOWN ON PLANS.
  - ERECT BRACING WITH MARK AT SAME END AS SHOWN ON PLANS.
  - FOR FIELD BOLT GRADES, SEE POINT TO POINT BOLT LIST, U.N.O.
  - WELD SIZES AND LENGTHS CALLED FOR ON THE DRAWINGS ARE THE NET EFFECTIVE REQUIRED (INCREASE WELD SIZE IF GAPS EXIST AT THE FAYING SURFACE).
  - ELECTRODES FOR FIELD WELDS SHALL BE E70XX.
  - SFRS - SEISMIC FORCE RESISTING SYSTEM (SEE NOTE 3 THIS PAGE)

EPLAN NOTE 3(REF:S0.03):  
WELD WITH SFRS INFO IN TILE SHALL CONFORM TO THE AWS D1.1 AND D1.8  
1) WELDING PROCEDURE SPECIFICATIONS (WPS): Welding shall be done with appropriate Weld Procedures prepared in accordance with AWS D1.1 and AWS D1.8 clause 6.1. Submit for review per AISC 341 Section 12.3.  
2) FILLER METAL: Welds of members of the SFRS shall be made with filler metal conforming to the requirements of AISC 341 Section A3.4 and AWS D1.8 clause 6.3, which can produce welds that have a minimum Charpy V-Notch toughness of 20 foot-pounds at 0 degrees Fahrenheit. Submit evidence of compliance.  
3) WELD (RUNOFF) TABS: Remove weld (runoff) tabs, unless noted otherwise, and grind surfaces per AWS D1.8 clause 6.11 unless noted otherwise. For AISC 358 Prequalified SMF and IMF connections, comply with AISC 358 Section 3.4.  
4) CONTINUITY PLATES AND STIFFENERS placed into the webs of rolled shapes shall be detailed in accordance with AWS D1.8 clause 4.1. For AISC 358 Prequalified SMF and IMF connections, comply with AISC 358 Section 3.6.

- PROTECTED ZONE:
- 1.) Markings are required before and after fireproofing.
  - 2.) Welded, bolted, screwed or shot-in attachments for perimeter edge angles, exterior facades, partitions, duct work, piping or other construction shall not be placed within the Protected Zone per AISC 341 Sec 12.1.
  - 3.) Repair holes, tack welds, erection aids, air-arc gouging and unspecified thermal cutting from fabrication or erection operations in accordance with AWS D1.8 clause 6.15.
  - 4.) Steel headed stud anchors, decking attachments or anything that penetrates the beam flange shall not be permitted on beam flanges within the protected zone unless specifically permitted in AISC 358.
  - 5.) Arc spot welds as required to secure decking are permitted.
  - 6.) Protected zone markings are required before and after fireproofing.



- NOTES:
1. [Hatched area symbol] INDICATES PROTECTED ZONE. NO MISCELLANEOUS ATTACHMENT IS PERMITTED IN PROTECTED ZONE INCLUDING BUT NOT LIMITED TO PLUMBING, HVAC, ELECTRICAL, ETC.
  2. "d" AND "L" DIMENSIONS START AT BRACE WELD TO GUSSET PLATE.

TYPICAL PROTECTED ZONES OF SPECIAL  
CONCENTRIC BRACED FRAMES (SCBF)

01/24/2025		RELEASED FOR CONSTRUCTION
10/01/2024		ISSUED FOR APPROVAL
NO BACK CHARGES WILL BE ACCEPTED WITHOUT PRIOR AUTHORIZATION IN WRITING		
NOTE:		
JOB NAME & LOCATION: Cache and Pearl 50 S. Cache St. and 45 & 75 E. Pearl Ave Jackson Hole, WY		ARCH: NORTHWORKS ARCHITECTS & PLANNERS ENGR: DCI ENGINEERS CONTR: Dick Anderson Construction
REF: VARIOUS DRAWN BY: PK 09/19/2024 SHEET TITLE: ELEVATION VIEWS (BRACING) - ZONE 5		JOB NO: 2367 DWG NO: E505

WORK THIS DWG WITH: E501, E502, E503 & E504