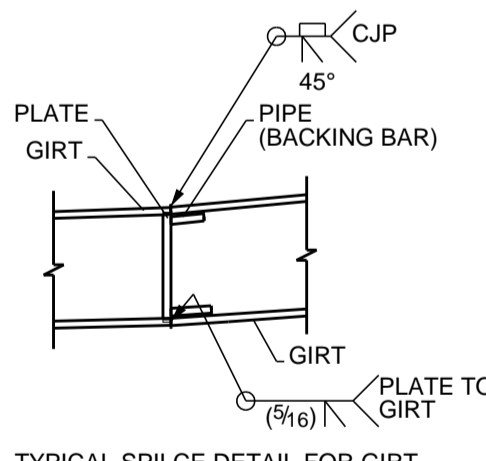
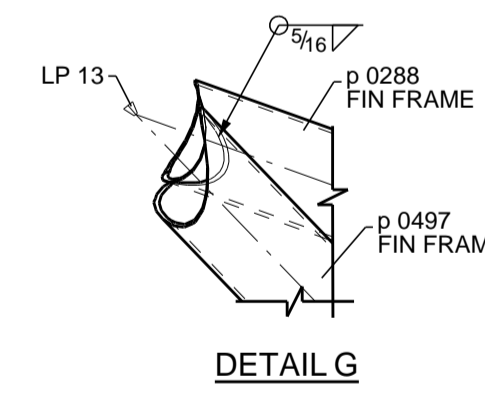
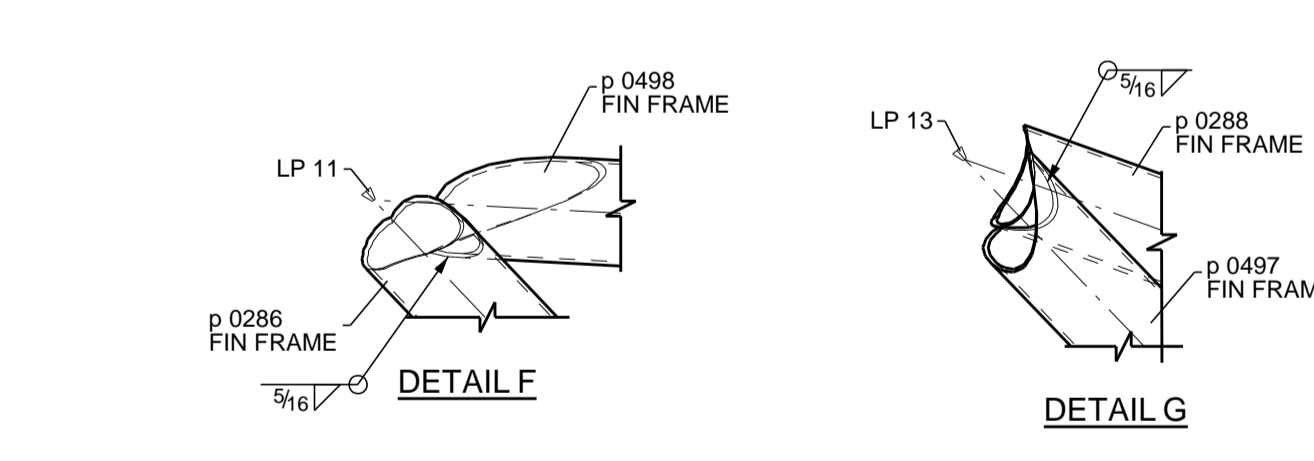
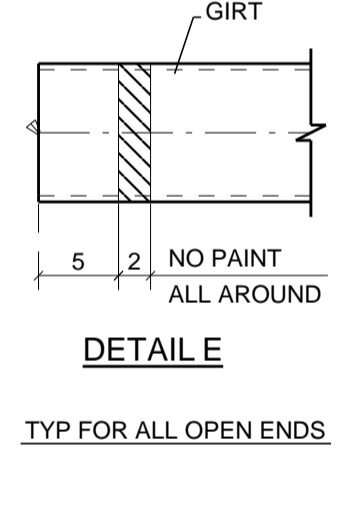
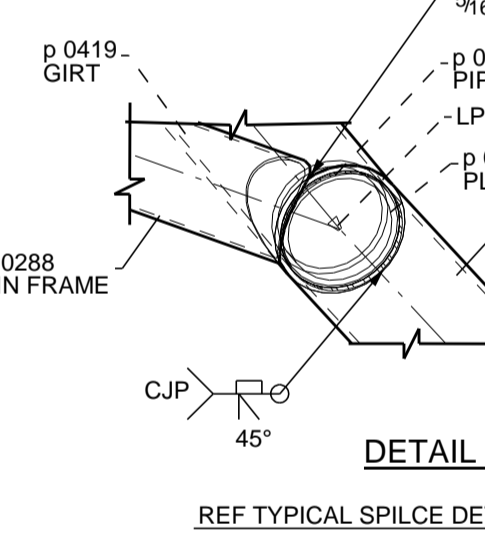
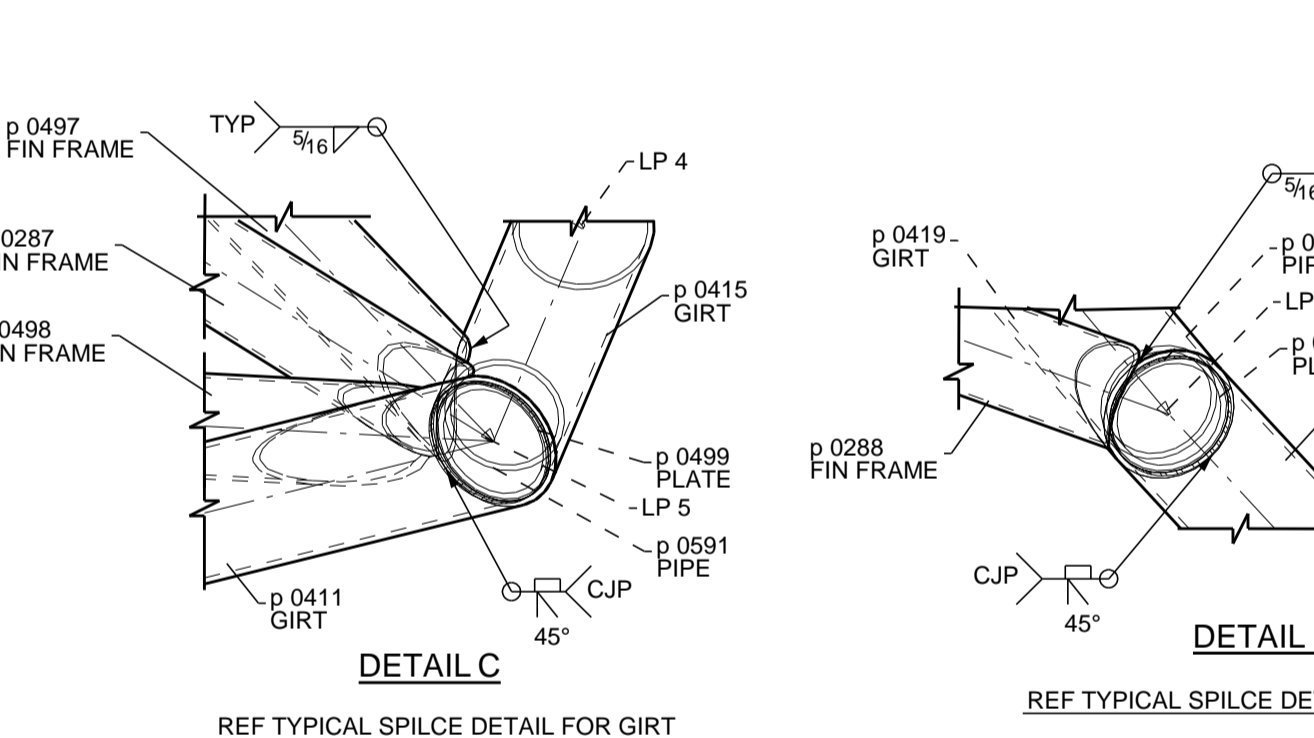
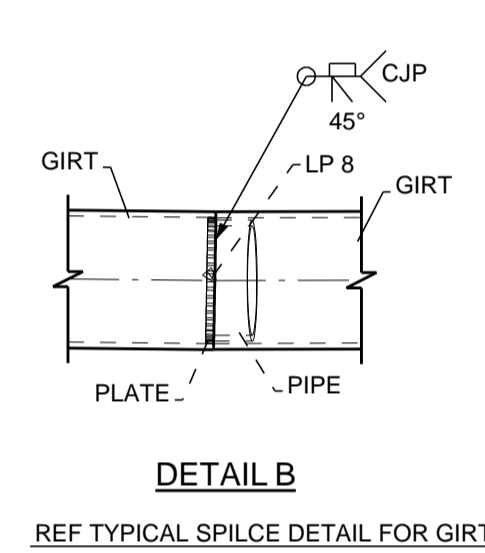
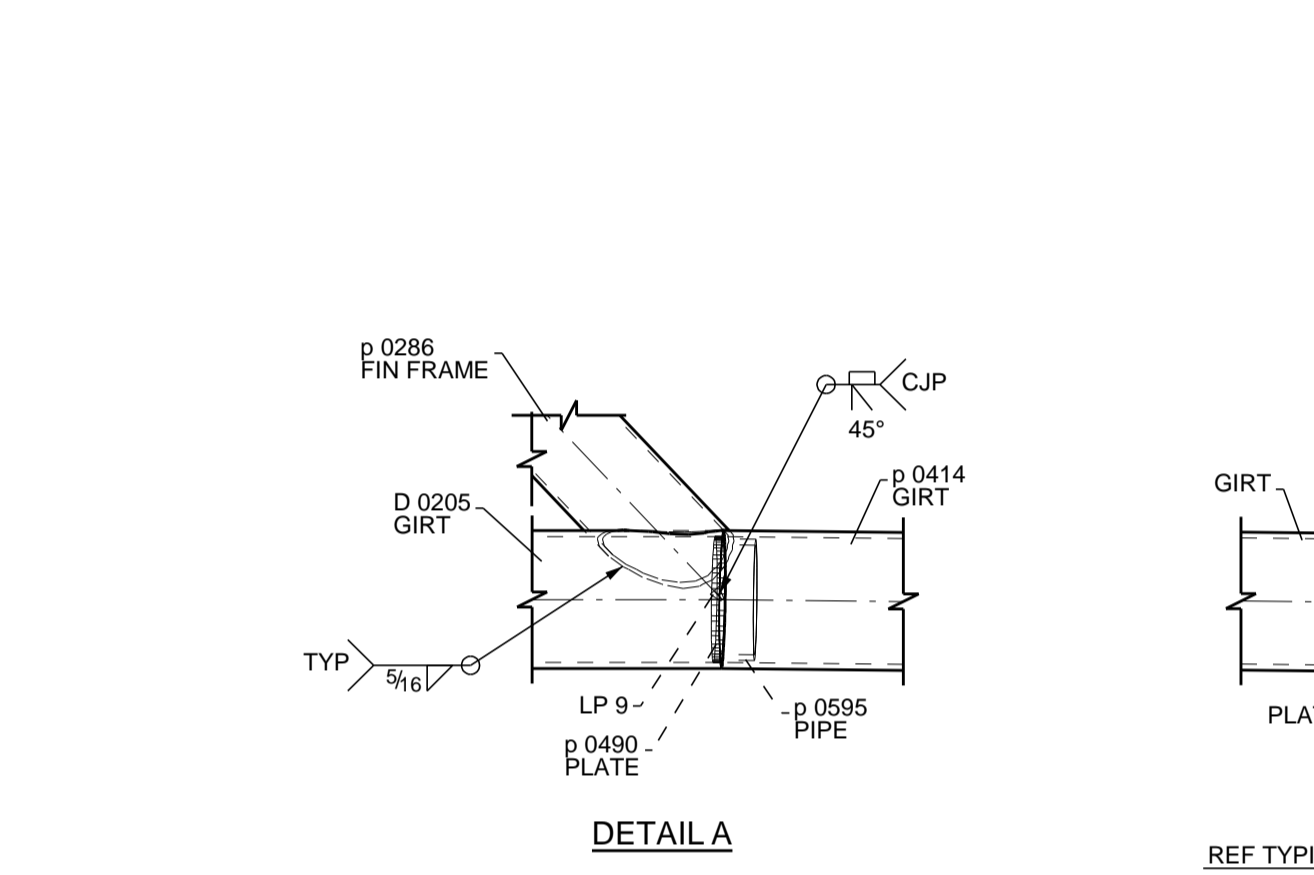
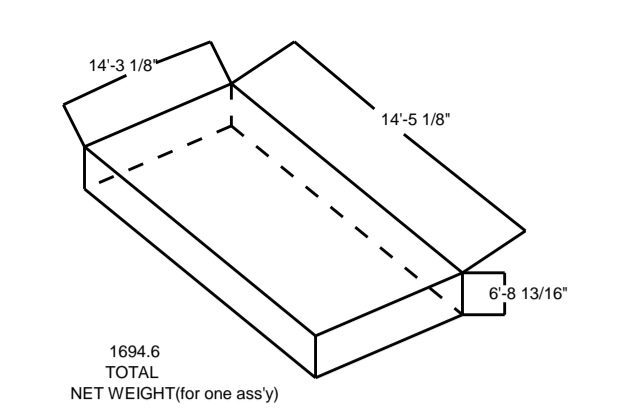
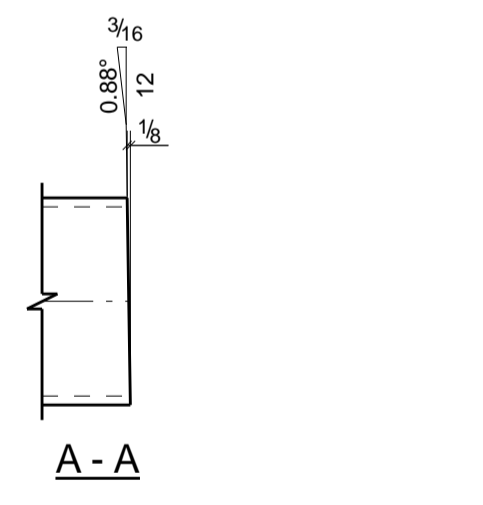
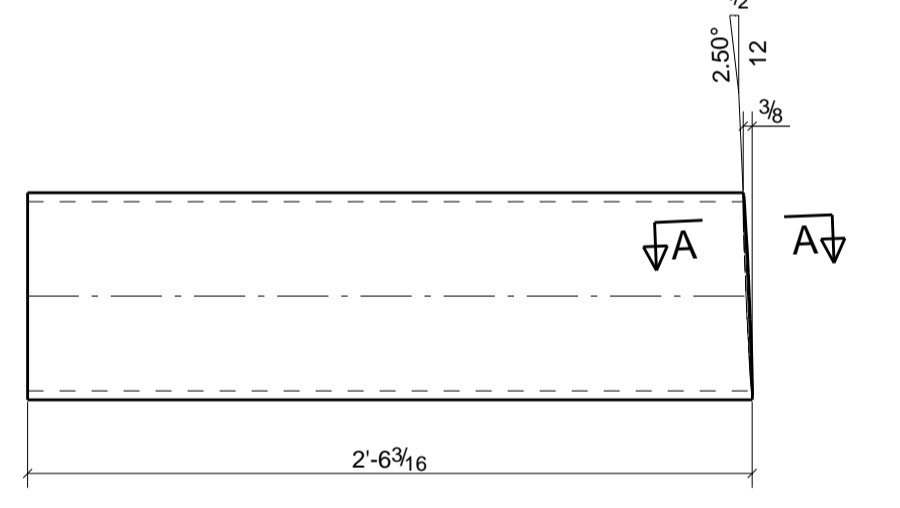
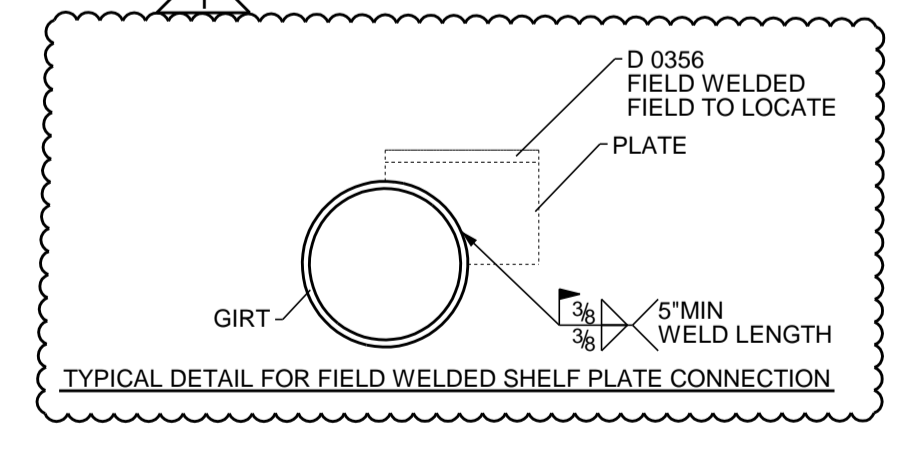
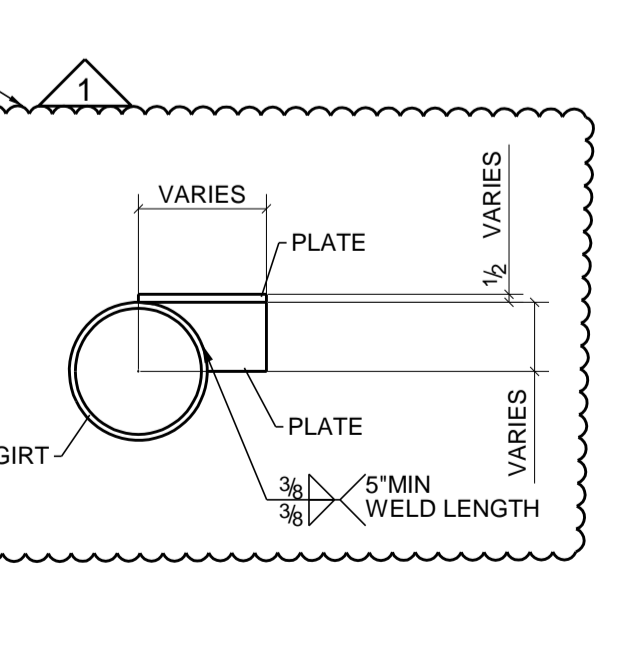
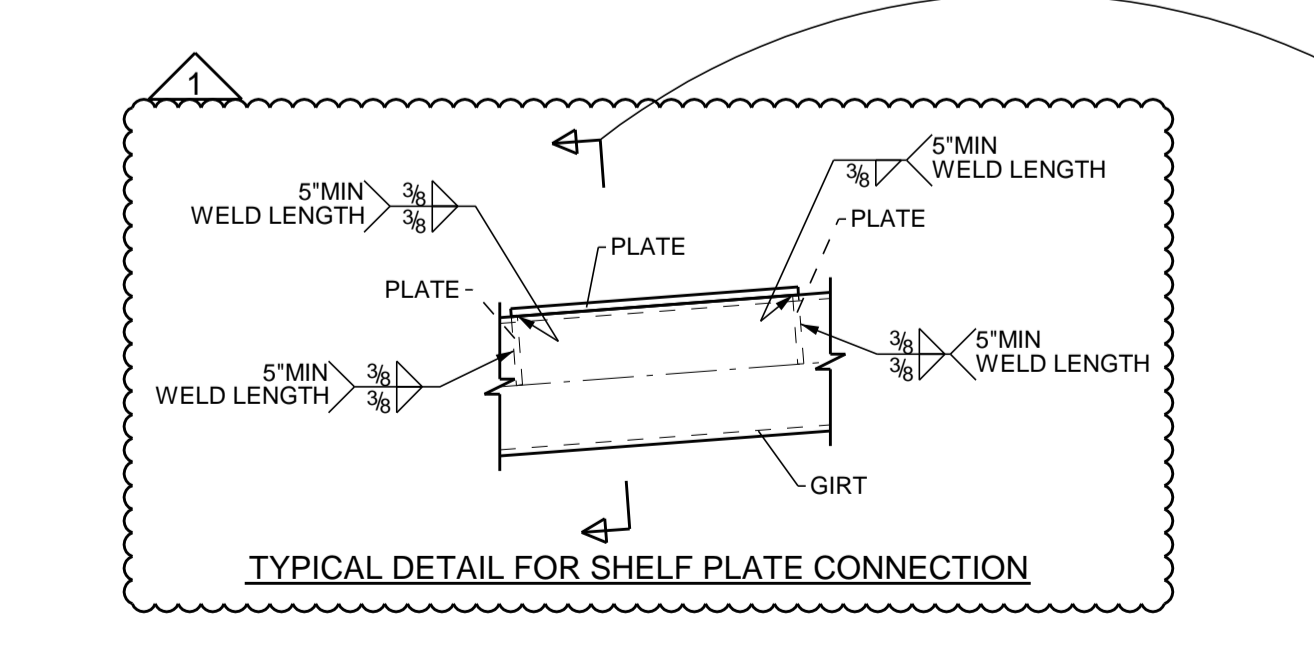
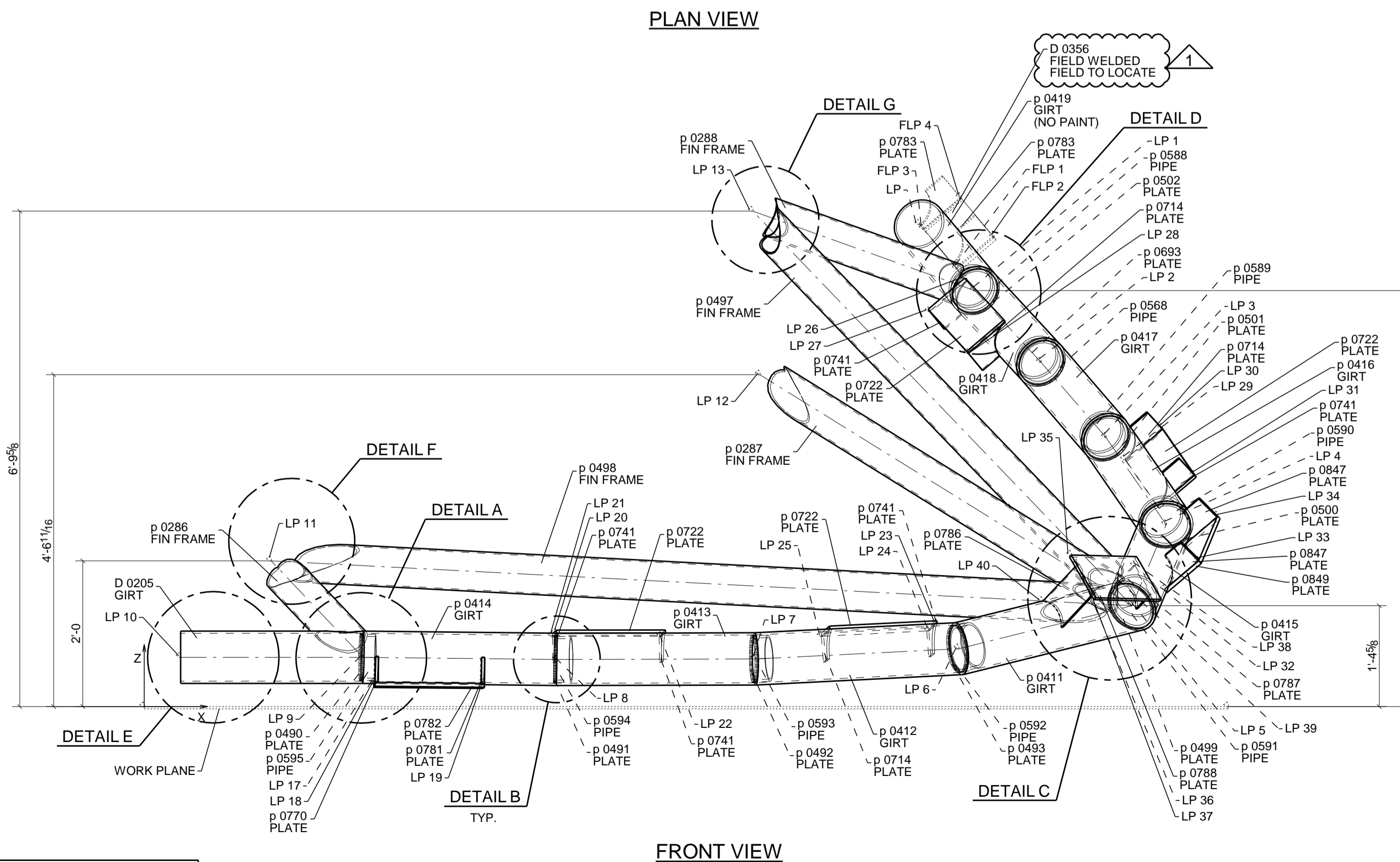


Point Name	X (in)	Y (in)	Z (in)	Description
LP 1	117.278	12.816	79.453	Tube node
LP 2	118.721	127.420	68.534	Tube node
LP 3	141.688	132.720	56.755	Tube node
LP 4	158.301	95.264	44.355	Tube node
LP 5	168.243	66.726	29.985	Tube node
LP 6	162.638	37.650	16.035	Tube node
LP 7	134.075	20.605	9.541	Tube node
LP 8	0	0	0	# 2 AXIS
LP 9	100.302	14.408	7.961	Tube node
LP 10	67.924	11.756	7.783	Tube node
LP 11	36	10.813	6.732	Tube node
LP 12	37.720	10.752	3.793	EDGE OF PLATE
LP 13	58.011	7.758	3.997	EDGE OF PLATE
LP 14	46.022	-1.756	3.933	EDGE OF PLATE
LP 15	62.865	12.054	12.085	EDGE OF PLATE
LP 16	62.811	20.814	13.331	EDGE OF PLATE
LP 17	85.149	-1.481	11.574	EDGE OF PLATE
LP 18	100.307	20.703	13.644	EDGE OF PLATE
LP 19	129.125	28.389	12.477	EDGE OF PLATE
LP 20	111.697	21.824	11.356	EDGE OF PLATE
LP 21	129.223	149.564	65.097	EDGE OF PLATE
LP 22	135.387	142.772	70.276	EDGE OF PLATE
LP 23	161.462	95.724	40.627	EDGE OF PLATE
LP 24	162.547	66.993	45.844	EDGE OF PLATE
LP 25	172.895	79.744	38.134	EDGE OF PLATE
LP 26	188.063	59.697	19.377	EDGE OF PLATE
LP 27	173.573	41.448	24.002	EDGE OF PLATE
LP 28	178.685	63.56	31.408	EDGE OF PLATE
LP 29	153.293	20.027	24.967	EDGE OF PLATE
LP 30	156.645	19.158	17.925	EDGE OF PLATE
LP 31	160.496	30.074	20.448	EDGE OF PLATE
LP 32	163.651	24.424	23.465	EDGE OF PLATE
LP 33	163.106	31.745	23.229	EDGE OF PLATE
LP 34	147.886	28.562	17.322	EDGE OF PLATE
LP 35	135.678	127.214	58.195	EDGE OF PLATE
LP 36	103.388	60.733	54.023	Tube node
LP 37	20.895	20.268	24.016	Tube node
LP 38	100.308	150.659	81.605	Tube node
LP 39	0	0	0	LOCAL ORIGIN



CATEGORY	CHARACTERISTICS	REQD	TEST	TEST METHOD
1.0	Surface preparation to SSPC-SP 6	X	X	SSPC-PA 1
1.1	Shop edges ground smooth	X	X	SSPC-PA 1
1.2	Continuous weld appearance	X	X	SSPC-PA 1
1.3	Standard structural bolts	X	X	SSPC-PA 1
1.4	Weld spatters removed	X	X	SSPC-PA 1
1.5	Weld ripples removed	X	X	SSPC-PA 1
2.0	Visual inspection	X	X	SSPC-PA 1
2.1	Visual inspection	X	X	SSPC-PA 1
2.2	Visual inspection	X	X	SSPC-PA 1
2.3	Visual inspection	X	X	SSPC-PA 1
2.4	Visual inspection	X	X	SSPC-PA 1
2.5	Visual inspection	X	X	SSPC-PA 1
2.6	Visual inspection	X	X	SSPC-PA 1
2.7	Visual inspection	X	X	SSPC-PA 1
2.8	Visual inspection	X	X	SSPC-PA 1
2.9	Visual inspection	X	X	SSPC-PA 1
2.10	Visual inspection	X	X	SSPC-PA 1
2.11	Visual inspection	X	X	SSPC-PA 1
2.12	Visual inspection	X	X	SSPC-PA 1
2.13	Visual inspection	X	X	SSPC-PA 1
2.14	Visual inspection	X	X	SSPC-PA 1
2.15	Visual inspection	X	X	SSPC-PA 1
2.16	Visual inspection	X	X	SSPC-PA 1
2.17	Visual inspection	X	X	SSPC-PA 1
2.18	Visual inspection	X	X	SSPC-PA 1
2.19	Visual inspection	X	X	SSPC-PA 1
2.20	Visual inspection	X	X	SSPC-PA 1
2.21	Visual inspection	X	X	SSPC-PA 1
2.22	Visual inspection	X	X	SSPC-PA 1
2.23	Visual inspection	X	X	SSPC-PA 1
2.24	Visual inspection	X	X	SSPC-PA 1
2.25	Visual inspection	X	X	SSPC-PA 1
2.26	Visual inspection	X	X	SSPC-PA 1
2.27	Visual inspection	X	X	SSPC-PA 1
2.28	Visual inspection	X	X	SSPC-PA 1
2.29	Visual inspection	X	X	SSPC-PA 1
2.30	Visual inspection	X	X	SSPC-PA 1
2.31	Visual inspection	X	X	SSPC-PA 1
2.32	Visual inspection	X	X	SSPC-PA 1
2.33	Visual inspection	X	X	SSPC-PA 1
2.34	Visual inspection	X	X	SSPC-PA 1
2.35	Visual inspection	X	X	SSPC-PA 1
2.36	Visual inspection	X	X	SSPC-PA 1
2.37	Visual inspection	X	X	SSPC-PA 1
2.38	Visual inspection	X	X	SSPC-PA 1
2.39	Visual inspection	X	X	SSPC-PA 1
2.40	Visual inspection	X	X	SSPC-PA 1
2.41	Visual inspection	X	X	SSPC-PA 1
2.42	Visual inspection	X	X	SSPC-PA 1
2.43	Visual inspection	X	X	SSPC-PA 1
2.44	Visual inspection	X	X	SSPC-PA 1
2.45	Visual inspection	X	X	SSPC-PA 1
2.46	Visual inspection	X	X	SSPC-PA 1
2.47	Visual inspection	X	X	SSPC-PA 1
2.48	Visual inspection	X	X	SSPC-PA 1
2.49	Visual inspection	X	X	SSPC-PA 1
2.50	Visual inspection	X	X	SSPC-PA 1

ABM MARK	NO. OF PIECES	MARK	SECTION	LENGTH FEET	WEIGHT (LBS)	GRADE	REMARKS
D 0205	1	D205	SGRT 14'-3 1/8" x 11'-6 1/8"				
	1	D205	TSR8.625X0.375	2'	6.316'	78	A500-GR-C-46
	1	p286	TSR8.625X0.250	1'	6.516'	24	A500-GR-C-46
	1	p287	TSR8.625X0.250	5'	10.116'	93	A500-GR-C-46
	1	p288	TSR8.625X0.250	2'	9.316'	44	A500-GR-C-46
	1	p411	TSR8.625X0.375	3'	10.116'	94	A500-GR-C-46
	1	p412	TSR8.625X0.375	2'	11.116'	91	A500-GR-C-46
	1	p413	TSR8.625X0.375	2'	9.516'	86	A500-GR-C-46
	1	p414	TSR8.625X0.375	2'	9.116'	83	A500-GR-C-46
	1	p415	TSR8.625X0.375	2'	11.716'	91	A500-GR-C-46
	1	p416	TSR8.625X0.375	2'	10.316'	89	A500-GR-C-46
	1	p417	TSR8.625X0.375	2'	6.1316'	79	A500-GR-C-46
	1	p418	TSR8.625X0.375	2'	6.1516'	80	A500-GR-C-46
	1	p419	TSR8.625X0.375	2'	6.1816'	77	A500-GR-C-46
	1	p490	PL 1/2"x7/8"	0'	7.1516'	7	A572-GR-50
	1	p491	PL 1/2"x7/8"	0'	7.7816'	7	A572-GR-50
	1	p492	PL 1/2"x7/8"	0'	7.7816'	7	A572-GR-50
	1	p493	PL 1/2"x7/8"	0'	8.116'	7	A572-GR-50
	1	p497	TSR8.625X0.250	11'	5.3816'	182	A500-GR-C-46
	1	p498	TSR8.625X0.250	11'	3.7816'	180	A500-GR-C-46
	1	p499	PL 1/2"x7/8"	0'	8.1316'	8	A572-GR-50
	1	p500	PL 1/2"x7/8"	0'	9.316'	7	A572-GR-50
	1	p501	PL 1/2"x7/8"	0'	7.1516'	7	A572-GR-50
	1	p502	PL 1/2"x7/8"	0'	7.7816'	7	A572-GR-50
	1	p568	HSS7.625X0.375	0'	2.116'	5	A500-GR-C-46
	1	p588	HSS7.625X0.375	0'	2.316'	5	A500-GR-C-46
	1	p589	HSS7.625X0.375	0'	2.116'	5	A500-GR-C-46
	1	p590	HSS7.625X0.375	0'	3.1516'	9	A500-GR-C-46
	1	p591	HSS7.625X0.375	0'	5.1116'	13	A500-GR-C-46
	1	p592	HSS7.625X0.375	0'	3.9116'	8	A500-GR-C-46
	1	p593	HSS7.625X0.375	0'	2.9116'	6	A500-GR-C-46
	1	p594	HSS7.625X0.375	0'	2.1116'	6	A500-GR-C-46
	1	p595	HSS7.625X0.375	0'	2.11816'	5	A500-GR-C-46
	1	p693	PL 1/2"x7/8"	0'	7.7816'	7	A572-GR-50
	1	p770	PL 1/2"x4 5/16"	0'	8'	3	A36
	1	p781	PL 1/2"x4 5/16"	0'	8'	3	A36
	1	p782	PL 5/8"x8"	1'	6'	26	A36
	1	p786	PL 3/8"x6"	0'	9.7816'	5	A36
	1	p787	PL 3/8"x4 5/8"	0'	6'	2	A36
	1	p788	PL 1/2"x9"	1'	4'	20	A36
	1	p849	PL 5/8"x8"	1'	6'	26	A36
	2	p847	PL 1/2"x4 5/16"	0'	8'	6	A36
	3	p714	PL 3/8"x4 5/16"	0'	8'	6	A36
	4	p722	PL 1/2"x8"	1'	6'	82	A36
	5	p741	PL 3/8"x4 5/16"	0'	8'	11	A36



ONE - GIRTS - D205



BOLTS (UNS)	1"9_A320N	BLUEPRINTS	NO. DATE FOR	BLUEPRINTS	NO. DATE FOR	BLUEPRINTS	NO. DATE FOR
OPEN HOLES (UNS)	1"1180						
PREP:	SSPC-SP6						