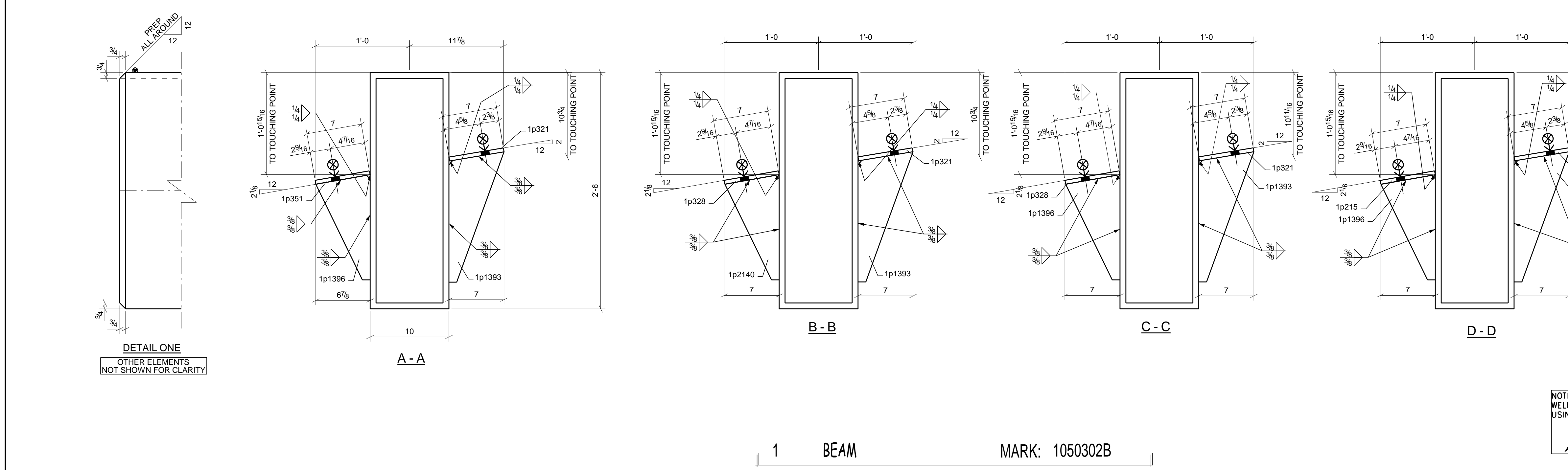
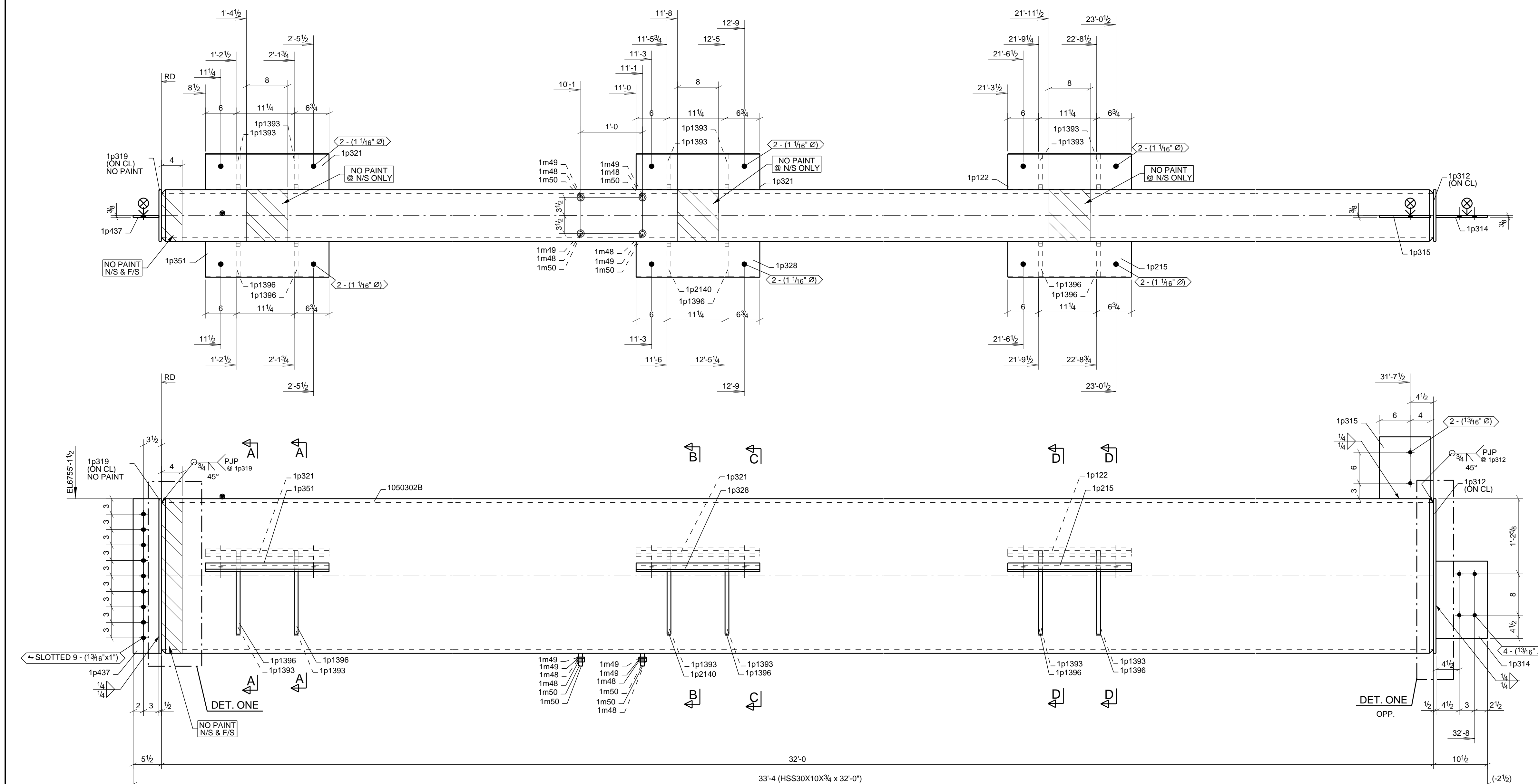


LOCATION					
MARK	QTY	T.O.S	GRID REF	SEQ	REF.
1050302B	1	6755'-11/2	B4-1	10503	E1050300



HOLE PATTERNS NOTED "SLIP CRITICAL" S.C. CLASS AISC CLASS B50 CLASS C' SHALL BE PREPARED TO SATISFY S.C CONNECTIONS. THE CONTACT SURFACE (CONNECTION SIDE) SHALL BE UNCOATED WITHIN 2" OF THOSE HOLES. CONTACT SURFACE ARE TO BE FREE OF BURRS AND ALL FOREIGN MATERIAL.

BILL OF MATERIAL											
SEQ.	QTY	QTY	SHIP	PIECE	SHAPE	FIN	STEEL	LENGTH	REMARKS	WT	ASSY
10503	UNIT	TOTAL	MARK	MARK	MARK	MARK	MARK	MARK	MARK	MARK	MARK
10503	ONE	1050302B			BEAM	P6	A500-GR.C	32'-0"		6696	
1	1		1050302B		HSS30X10X3/4		A500-GR.C	32'-0"	CSE	6277	
4	4		1m48		NUT_3/4		A583-DH	0'-0.314"	CSE	1	
4	4		1m49		WSH_3/4		F436-T1	0'-0.316"	CSE	0	
4	4		1m50		WST3/4		A108	0'-2.112"	CSE	1	
1	1		1p122		PL1/2X7"		A572-50	2'-0"	CSE	24	
1	1		1p215		PL1/2X7"		A572-50	2'-0"	CSE	24	
1	1		1p312		PL1/2X10"		A572-50	2'-6"	CSE	43	
1	1		1p314		PL3/8X10"		A572-50	1'-3"	CSE	16	
1	1		1p315		PL3/8X10"		A572-50	1'-0"	CSE	13	
1	1		1p319		PL1/2X10"		A572-50	2'-6"	CSE	43	
2	2		1p321		PL1/2X7"		A572-50	2'-0"	CSE	48	
1	1		1p328		PL1/2X7"		A572-50	2'-0"	CSE	24	
1	1		1p351		PL1/2X7"		A572-50	2'-0"	CSE	24	
1	1		1p437		PL3/8X5"		A572-50	2'-6"	CSE	16	
6	6		1p1393		PL3/4X7"		A572-50	1'-4.916"	BCSE	79	
5	5		1p1396		PL3/4X6 7/8"		A572-50	1'-1.114"	BCSE	55	
1	1		1p2140		PL3/4X6 7/8"		A572-50	1'-1.114"	BCSE	11	
					FIELD BOLTS						
11	11				3/4" Dia BOLT A325WSH F436-T1 NUT A583-DH			0'-2"			

DRAKE-WILLIAMS STEEL, Inc.
 1602 N. 11th Street
 Omaha, Nebraska 68110
 (402) 342-1043

NOTES:
 1. ALL MAT'L ASTM A36 U.N.
 2. EXTENSION DIMENSIONS ARE TO \odot
 3. TOLERANCES: AISC U.N.
 4. ALL GAS RE-ENTRANT CUTS SHALL HAVE A RADIUS PER AISC U.N.
 5. REF. AWS TABLE 7.2 or EQUIP. MFG. RECOMMENDED STUD/DBA WELDING REQ.
 6. ALL HOLES NOTED S.C./CLASS B ARE FOR SLIP CRITICAL CONNECTIONS. DO NOT ADD PAINT TO CONTACT SURFACES. CONTACT SURFACES ARE TO BE FREE OF BURRS AND ALL FOREIGN MATERIAL AND CLEANED TO SSPC-SP6 OR BETTER.
 7. OPEN HOLES: 13/16" U.N.
 8. SURFACE PREP: SSPC-SP6
 9. PAINT: SHERWIN WILLIAMS B66-310 Series Pro Cryl Universal Primer
 10. PAINT OPEN HOLES U.N. S.C./CLASS B
 11. WELD ELECTRODES: E70XXLH U.N.
 12. WELD A706 REBAR: E80 ELECTRODES

DETAILED BY: **Anatomy Steel Detailing IRON**

0	07/16/2025	ISSUED FOR FABRICATION	MSZ
C	06/16/2025	ISSUED FOR RE-APPROVAL	KWE
B	03/19/2025	ISSUED FOR RE-APPROVAL	KWE
A	02/04/2025	ISSUED FOR APPROVAL	MIN
REV	DATE	DESCRIPTION	DET

JOB: CMZ Giraffe Exhibit & Gift Shop
 JOB NO: 6689
 SHEET NO: 1050302B

CUSTOMER: iCON CONSTRUCTION COLORADO
 REF.SHT: E1050300