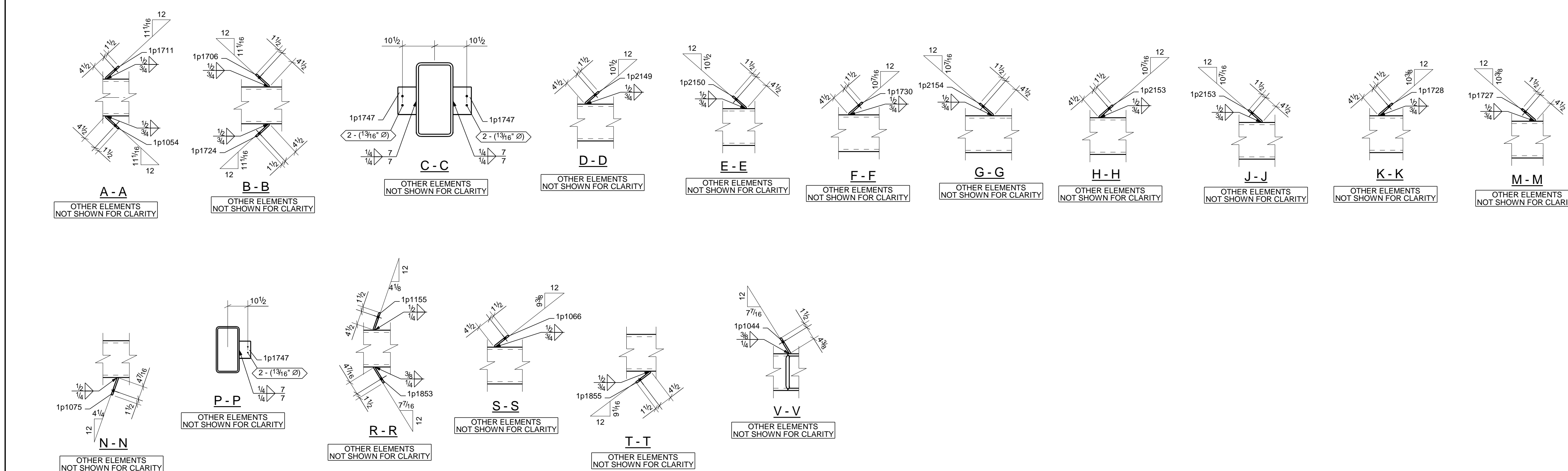
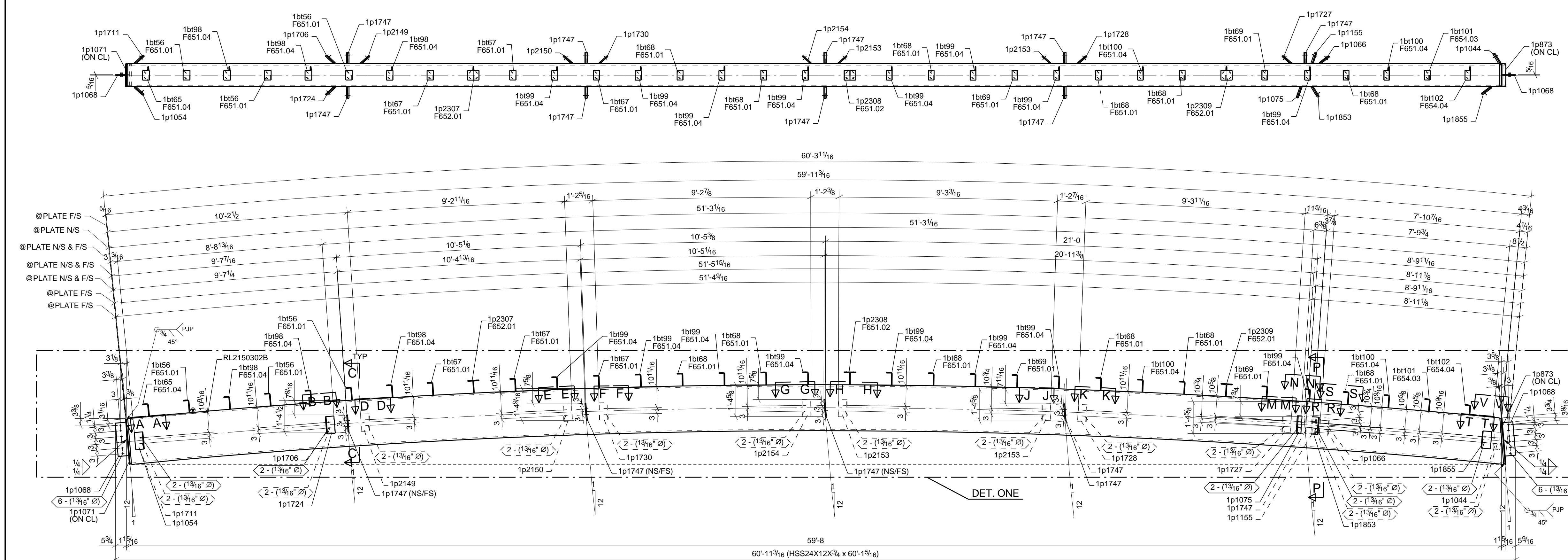


LOCATION					
MARK	QTY	T.O.S	GRID REF	SEQ	REF.
RL2150302B	1	6749-67/16	E-Ac9.2	21503	E2193001, E2193001 & E2193002

BILL OF MATERIAL

SEQ.	QTY	TOTAL	SHIP	PIECE	MARK	SHAPE	FIN	STEEL	LENGTH	REMARKS	W.T. EA.	ASSY
21503	ONE	ONE	RL2150302B	BEAM			P6					10995
1	1				RL2150302B	HSS24X12X3/4		A500-GR.C	60'-1 5/16"	ROLLED		10542
3	3				1b156	PL3/8"X5"		A572-50	0'-8 7/8"	F651.01		15
1	1				1b165	PL3/8"X7"		A572-50	0'-8 7/8"	F651.04		5
3	3				1b167	PL3/8"X5"		A572-50	0'-8 13/16"	F651.01		14
6	6				1b168	PL3/8"X5"		A572-50	0'-8 3/4"	F651.01		29
2	2				1b169	PL3/8"X5"		A572-50	0'-8 3/4"	F651.01		10
3	3				1b188	PL3/8"X7"		A572-50	0'-8 13/16"	F651.04		16
8	8				1b199	PL3/8"X7"		A572-50	0'-8 3/4"	F651.04		42
2	2				1b100	PL3/8"X7"		A572-50	0'-8 3/4"	F651.04		10
1	1				1b101	PL3/8"X5"		A572-50	0'-8 13/16"	F651.03		5
1	1				1b102	PL3/8"X7"		A572-50	0'-7 3/16"	F651.04		4
1	1				1b103	PL3/8"X12"		A572-50	2'-0 3/8"			31
1	1				1p1044	PL1/2"X6 1/4"		A572-50	0'-9"			8
1	1				1p1054	PL1/2"X6"		A572-50	0'-9"			7
1	1				1p1066	PL1/2"X6"		A572-50	0'-9"			7
2	2				1p1068	PL3/8"X5 1/2"		A572-50	1'-5 1/2"			17
1	1				1p1071	PL3/8"X12"		A572-50	2'-0"			31
1	1				1p1075	PL1/2"X6"		A572-50	0'-9"			8
1	1				1p1155	PL1/2"X6"		A572-50	0'-9"			8
1	1				1p1706	PL1/2"X6"		A572-50	0'-9"			7
1	1				1p1711	PL1/2"X6"		A572-50	0'-9"			7
1	1				1p1724	PL1/2"X6"		A572-50	0'-9"			7
1	1				1p1727	PL1/2"X6"		A572-50	0'-9"			7
1	1				1p1728	PL1/2"X6"		A572-50	0'-9"			7
1	1				1p1730	PL1/2"X6"		A572-50	0'-9"			7
9	9				1p1747	PL1/2"X6"		A572-50	0'-9"			69
1	1				1p1853	PL1/2"X6 1/4"		A572-50	0'-9"			8
1	1				1p1855	PL1/2"X6"		A572-50	0'-9"			7
1	1				1p2149	PL1/2"X6"		A572-50	0'-9"			7
1	1				1p2150	PL1/2"X6"		A572-50	0'-9"			7
2	2				1p2153	PL1/2"X6"		A572-50	0'-9"			15
1	1				1p2154	PL1/2"X6"		A572-50	0'-9"			7
1	1				1p2307	PL3/8"X6"		A572-50	0'-7"	F652.01		7
1	1				1p2308	PL3/8"X5"		A572-50	0'-6"	F651.02		7
1	1				1p2309	PL3/8"X6"		A572-50	0'-7"	F651.01		7
						FIELD BOLTS						
6	6					3/4" DIA BOLT A325WSHF438-11NUT A36CUPH			0'-1 3/4"			

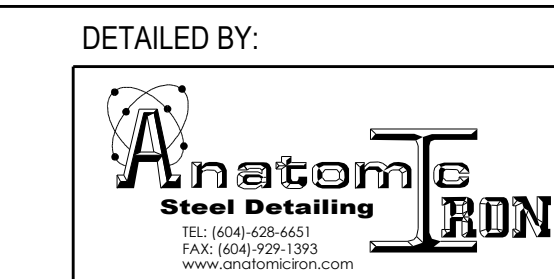


1 BEAM MARK: RL2150302B

WORK THIS DRAWING WITH RL2150302B-1

DRAKE-WILLIAMS STEEL, Inc.
 1602 N. 11th Street
 Omaha, Nebraska 68110
 (402) 342-1043

- NOTES:
1. ALL MATL ASTM A36 U.N.
 2. EXTENSION DIMENSIONS ARE TO \square
 3. TOLERANCES: AISC U.N.
 4. ALL GAS RE-ENTRANT CUTS SHALL HAVE A RADIUS PER AISC U.N.
 5. REF. AWS TABLE 7.2 or EQUIP. MFG. RECOMMENDED STUD/DBA WELDING REQ.
 6. ALL HOLES NOTED S.C./CLASS B ARE FOR SLIP CRITICAL CONNECTIONS. DO NOT ADD PAINT TO CONTACT SURFACES. CONTACT SURFACES ARE TO BE FREE OF BURRS AND ALL FOREIGN MATERIAL AND CLEANED TO SSPC-SP6 OR BETTER.
 7. OPEN HOLES: 13/16" U.N.
 8. SURFACE PREP: SSPC-SP6
 9. PAINT: SHERWIN WILLIAMS B66-310 Series Pro Cryl Universal Primer
 10. PAINT OPEN HOLES U.N. S.C./CLASS B
 11. WELD ELECTRODES: E70XXLH U.N.
 12. WELD A706 REBAR: E80 ELECTRODES



REV	DATE	DESCRIPTION	BY	CHECKED BY	DATE
0	06/12/2025	ISSUED FOR FABRICATION	KWE		
B	05/22/2025	ISSUED FOR RE-APPROVAL	KWE		
A	03/04/2025	ISSUED FOR APPROVAL	KWE		
REV	DATE	DESCRIPTION	BY	DET	

JOB: CMZ Giraffe Exhibit & Gift Shop
 CUSTOMER: iCON CONSTRUCTION COLORADO
 JOB NO: 6689
 SHEET NO: RL2150302B

HOLE PATTERNS NOTED "SLIP CRITICAL" SC CLASS AISC CLASS B50 CLASS C' SHALL BE PREPARED TO SATISFY SC CONNECTIONS. THE CONTACT SURFACE (CONNECTION SIDE) SHALL BE UNCOATED WITHIN 3" OF THOSE HOLES. CONTACT SURFACE ARE TO BE FREE OF BURRS AND ALL FOREIGN MATERIAL.