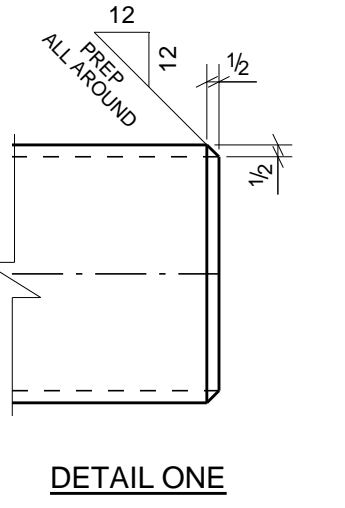
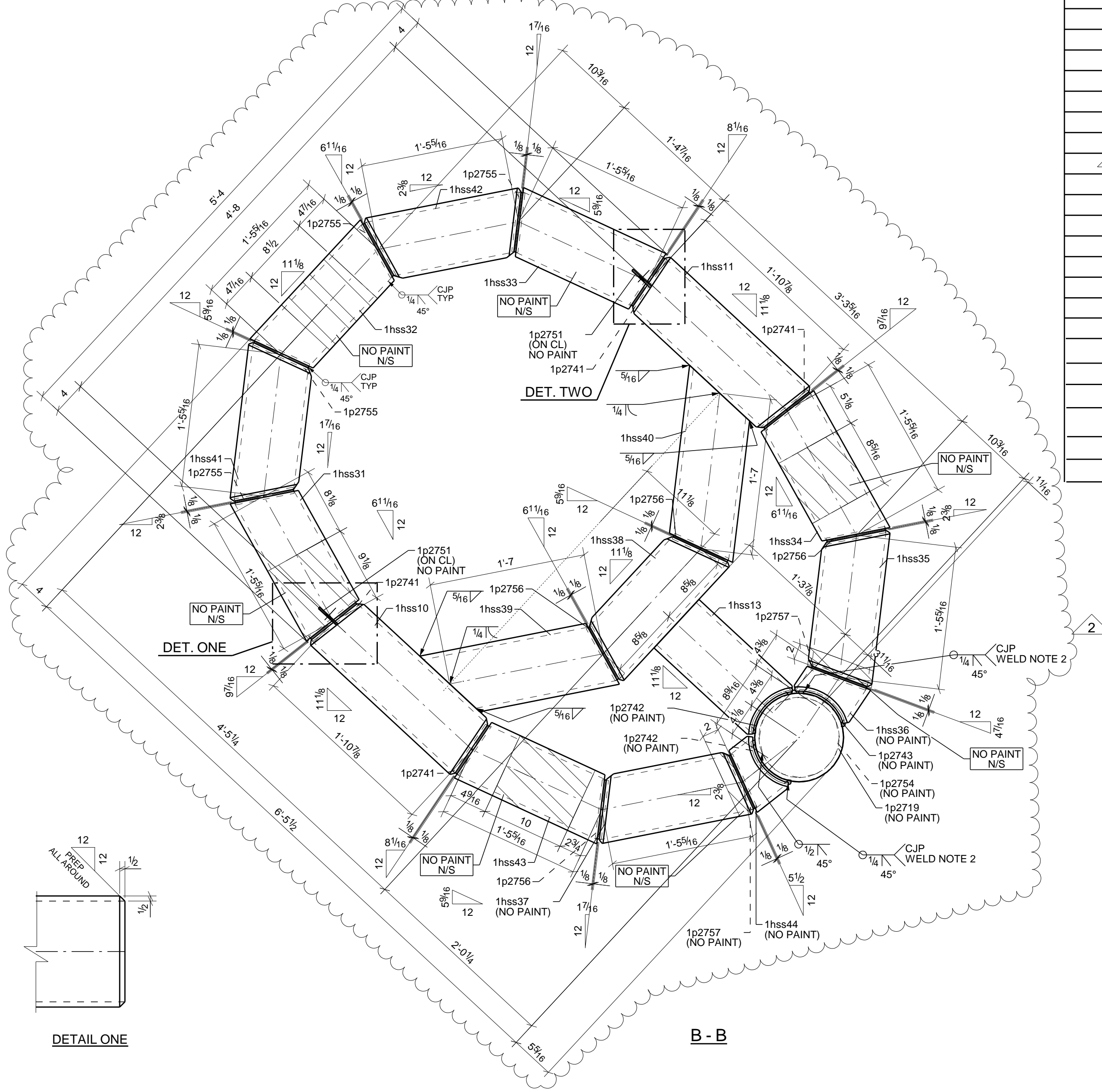
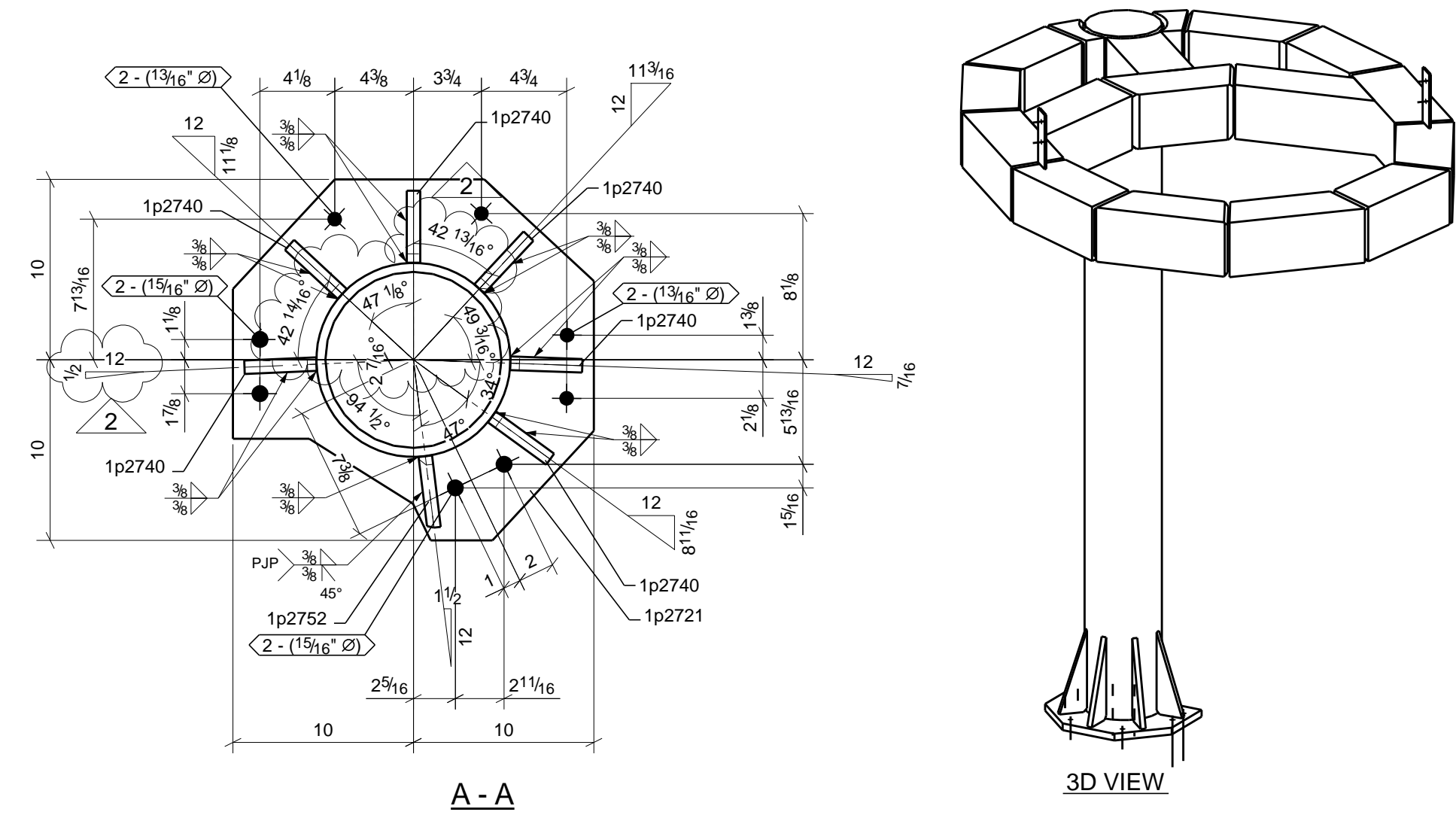
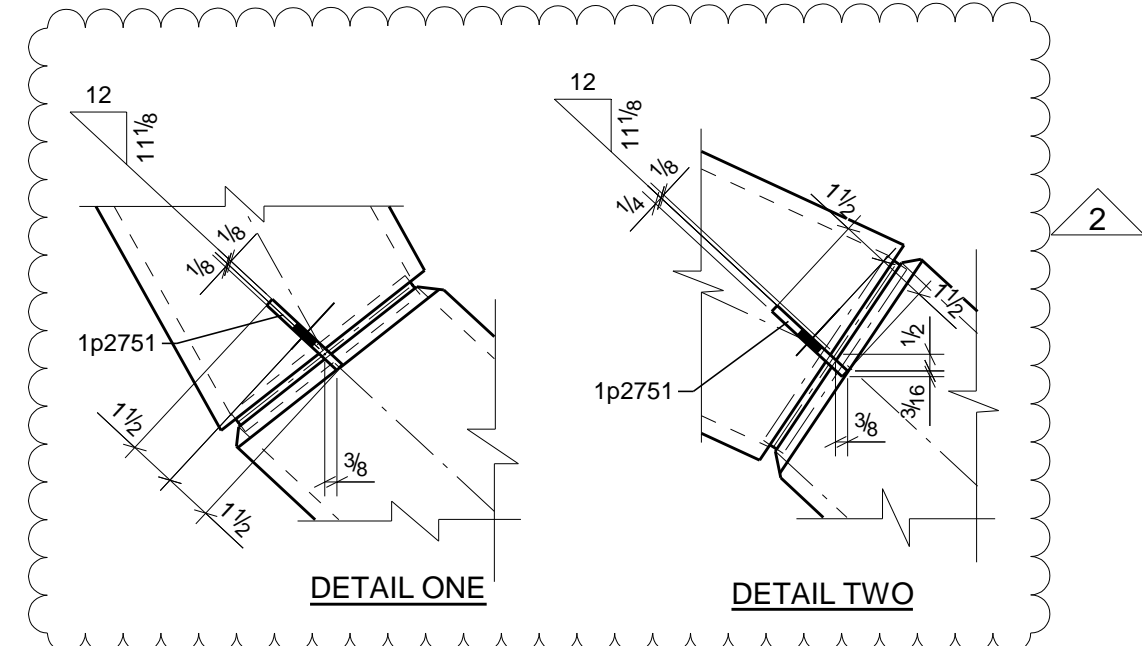
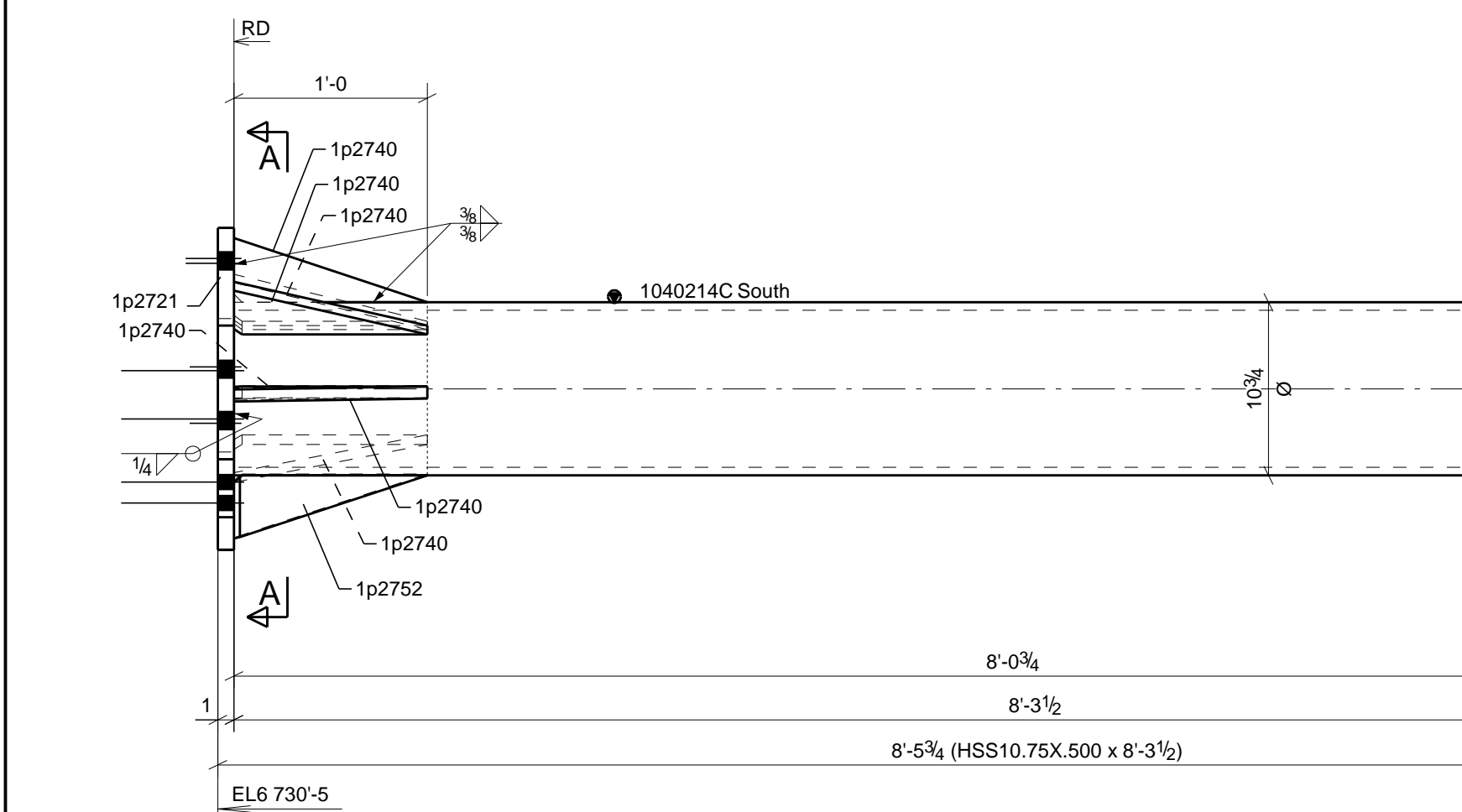
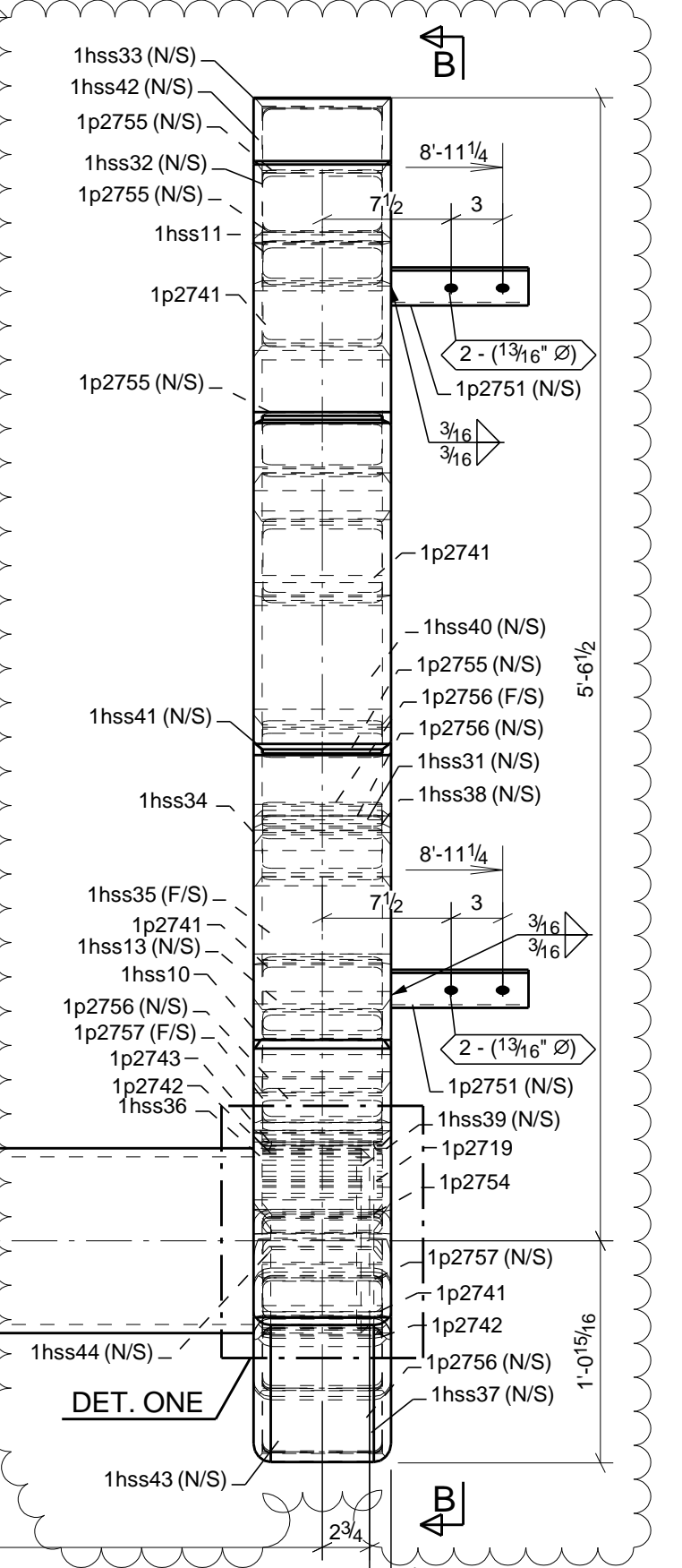
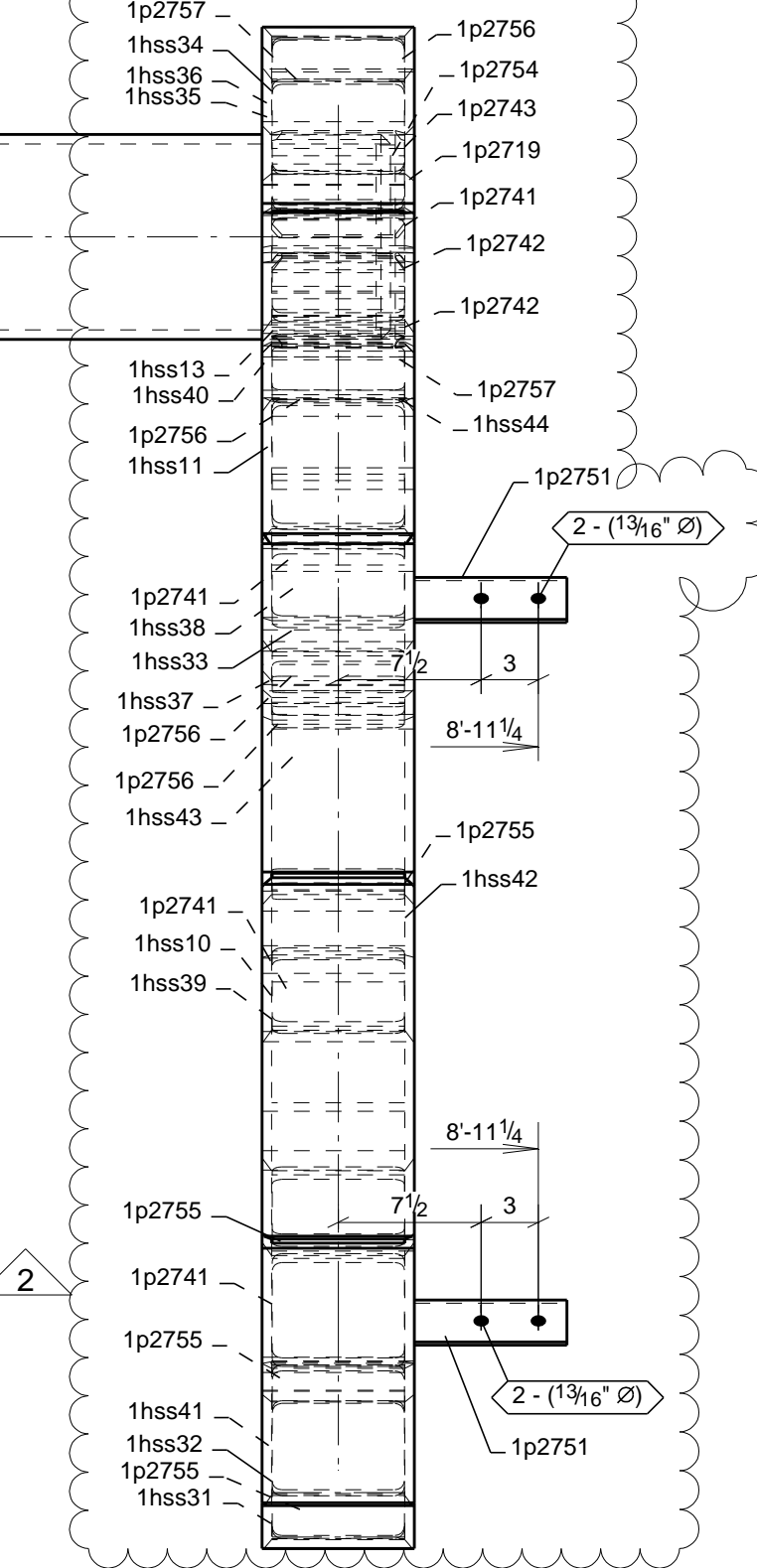
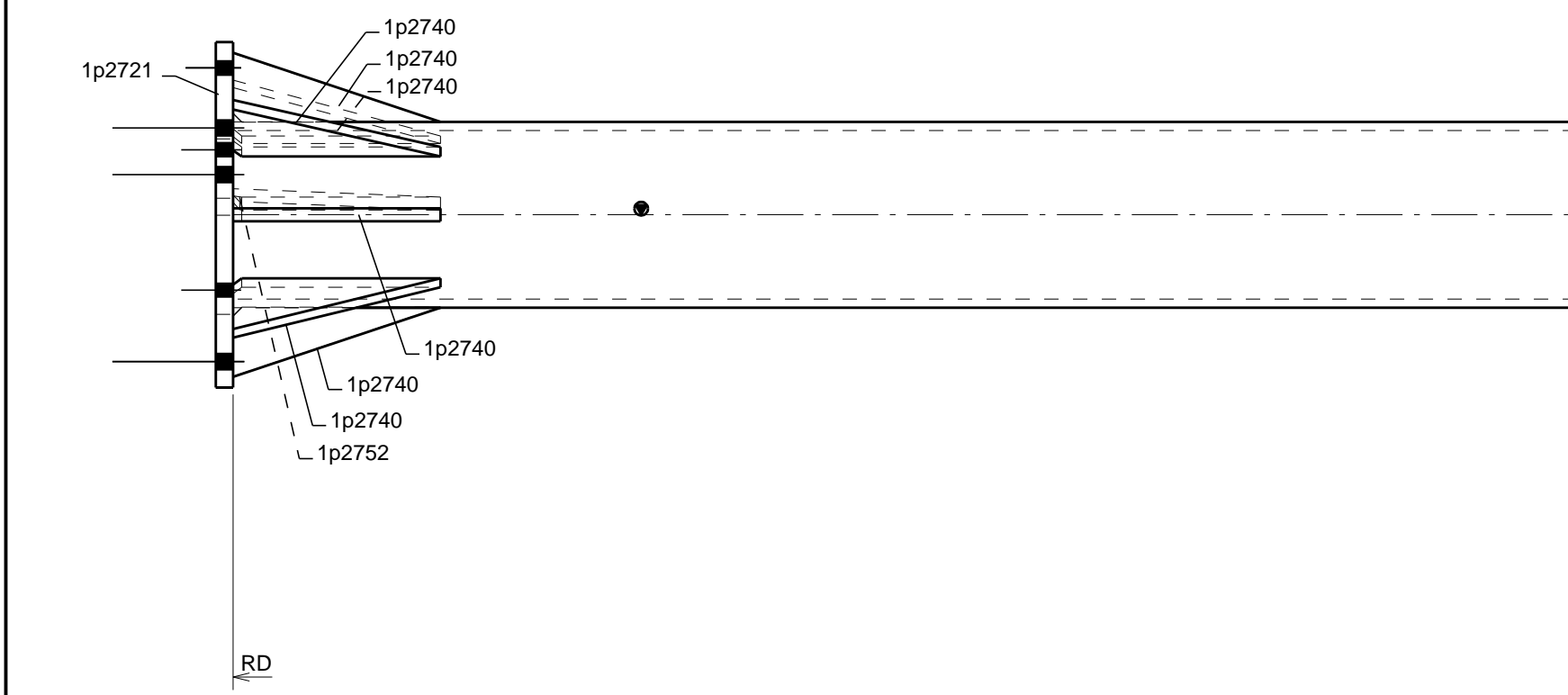


MARK	QTY	T.O.S	GRID REF	SEQ	REF.
1040214C	1	6739-6'3/4	Ad-Ao5-4.5	10402	E1040300



WELD NOTES:  
 1. WELD 1 hss 13 TO COLUMN FIRST.  
 2. WELD 1 hss 9 AND 1 hss 15 AFTER 1 hss 13 IS WELDED.

BILL OF MATERIAL

SEQ.	UNIT	TOTAL	SHIP MARK	PIECE MARK	SHAPE	FIN	STEEL GRADE	LENGTH	REMARKS	WT.E.A.	ASSY
10402	ONE	1	1040214C		COLUMN						1943
1	1	1		1040214C	HSS10.75X500		A500-GR.C	8-3 1/2"		CS2E	449
1	1	1		1hss10	HSS8X8X1/2		A500-GR.C	1'-11 3/4"		BC2E	94
1	1	1		1hss11	HSS8X8X1/2		A500-GR.C	1'-11 3/4"		BC2E	94
1	1	1		1hss13	HSS8X8X1/2		A500-GR.C	1'-3 7/8"		CS2E	65
1	1	1		1hss31	HSS8X8X1/2		A500-GR.C	1'-7"		BC2E	73
1	1	1		1hss32	HSS8X8X1/2		A500-GR.C	1'-7 5/8"		BC2E	73
1	1	1		1hss33	HSS8X8X1/2		A500-GR.C	1'-7"		BC2E	73
1	1	1		1hss34	HSS8X8X1/2		A500-GR.C	1'-7"		BC2E	73
1	1	1		1hss35	HSS8X8X1/2		A500-GR.C	1'-7"		BC2E	70
1	1	1		1hss36	HSS8X8X1/2		A500-GR.C	0'-5 3/16"		BC1E	15
1	1	1		1hss37	HSS8X8X1/2		A500-GR.C	1'-7"		BC2E	70
1	1	1		1hss38	HSS8X8X1/2		A500-GR.C	1'-7 5/16"		BC2E	70
1	1	1		1hss39	HSS8X8X1/2		A500-GR.C	1'-11 1/16"		BC2E	80
1	1	1		1hss40	HSS8X8X1/2		A500-GR.C	1'-11 1/16"		BC2E	80
1	1	1		1hss41	HSS8X8X1/2		A500-GR.C	1'-7 5/16"		BC2E	70
1	1	1		1hss42	HSS8X8X1/2		A500-GR.C	1'-7 5/16"		BC2E	70
1	1	1		1hss43	HSS8X8X1/2		A500-GR.C	1'-7"		BC2E	72
2	1	1		1hss44	HSS8X8X1/2		A500-GR.C	0'-5 3/16"		BC1E	15
1	1	1		1p2719	PL1"x10 3/4"		A572-50	0'-10 3/4"		CS2E	25
1	1	1		1p2721	PL1"x20"		A572-50	1'-8"		CS2E	86
6	6	6		1p2740	PL3/4"x4"		A572-50	1'-0"		BC1E	30
4	4	4		1p2741	PL3/4"x6 15/16"		A572-50	0'-6 15/16"		CS2E	41
2	2	2		1p2742	PL1/2"x7"		A36	0'-7 1/8"		CS2E	14
1	1	1		1p2743	PL1/2"x7"		A36	0'-7 1/8"		CS2E	7
2	2	2		1p2751	PL1/4"x3"		A36	0'-8"		CS2E	3
1	1	1		1p2752	PL3/4"x4"		A572-50	1'-0"		BC1E	5
2	1	1		1p2754	PL1"x8 5/8"		A572-50	0'-9 1/16"		CS2E	20
4	4	4		1p2755	PL3/4"x6 15/16"		A572-50	0'-7 3/16"		CS2E	42
4	4	4		1p2756	PL3/4"x6 15/16"		A572-50	0'-7 3/16"		CS2E	42
2	2	2		1p2757	PL3/4"x6 15/16"		A572-50	0'-7 1/16"		CS2E	21
FIELD BOLTS											
4	4	4			3/4" Dia BOLT A307/WSH A307/NUT A307			0'-1 1/2"			
2	2	2			3/4" Dia BOLT A325/WSH F436-T1/NUT A563-DH			0'-2 3/4"			
2	2	2			3/4" Dia BOLT A325/WSH F436-T1/NUT A563-DH			0'-3"			
4	4	4			3/4" Dia TITEN HD ZINC-			0'-7"			

**DRAKE-WILLIAMS STEEL, Inc.**  
 1602 N. 11th Street  
 Omaha, Nebraska 68110  
 (402) 342-1043

REV	DATE	DESCRIPTION	DET
2	02/23/2026	RE-ISSUED FOR FABRICATION	TD
1	01/27/2026	RE-ISSUED FOR FABRICATION	TD
0	01/19/2026	ISSUED FOR FABRICATION	PKU
A	12/15/2025	ISSUED FOR APPROVAL	TD

NOTES:  
 1. ALL MATL ASTM A36 U.N.  
 2. EXTENSION DIMENSIONS ARE TO Ⓢ  
 3. TOLERANCES: AISC U.N.  
 4. ALL GAS RE-ENTRANT CUTS SHALL HAVE A RADIUS PER AISC U.N.  
 5. REF. AWS TABLE 7.2 or EQUIP. MFG.  
 6. ALL HOLES NOTED S.C./CLASS B ARE FOR SLIP CRITICAL CONNECTIONS. DO NOT ADD PAINT TO CONTACT SURFACES. CONTACT SURFACES ARE TO BE FREE OF BURRS AND ALL FOREIGN MATERIAL AND CLEANED TO SSPC-SP6 OR BETTER.  
 7. OPEN HOLES: 13/16" U.N.  
 8. SURFACE PREP: SSPC-SP3  
 9. PAINT: SHERWIN WILLIAMS B66-310 Series Pro Cryl Universal Primer  
 10. PAINT OPEN HOLES U.N. S.C./CLASS B  
 11. WELD ELECTRODES: E70XXLH U.N.  
 12. WELD A706 REBAR: E80 ELECTRODES

JOB:	CMZ Giraffe Exhibit & Gift Shop	JOB NO:	6689	SHEET NO:	1040214C
CUSTOMER:	iCON CONSTRUCTION COLORADO				

HOLE PATTERNS NOTED "SLIP CRITICAL/CLASS A/SC CLASS B/SC CLASS C" SHALL BE PREPARED TO SATISFY SC CONNECTIONS. THE CONTACT SURFACE (CONNECTION SIDE) SHALL BE UNCOATED WITHIN 3" OF THOSE HOLES. CONTACT SURFACES ARE TO BE FREE OF BURRS AND ALL FOREIGN MATERIAL.

1 COLUMN MARK: 1040214C

REF.SHT: E1040300