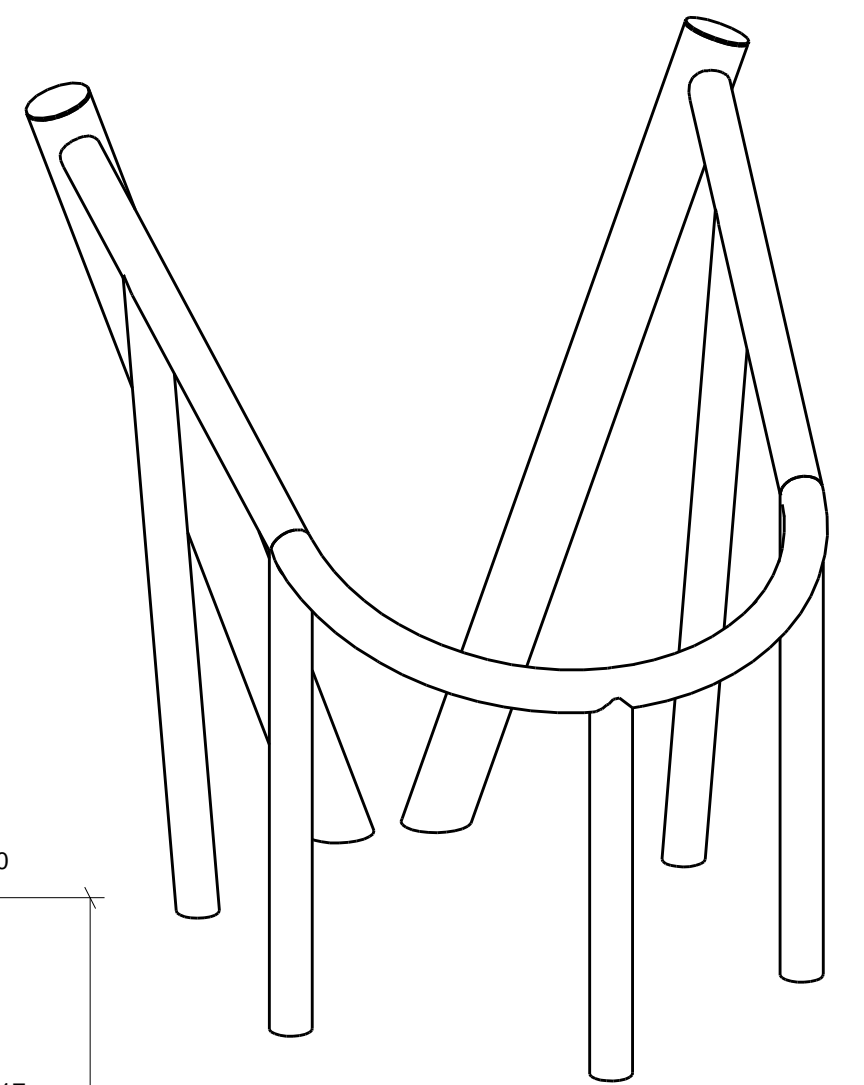
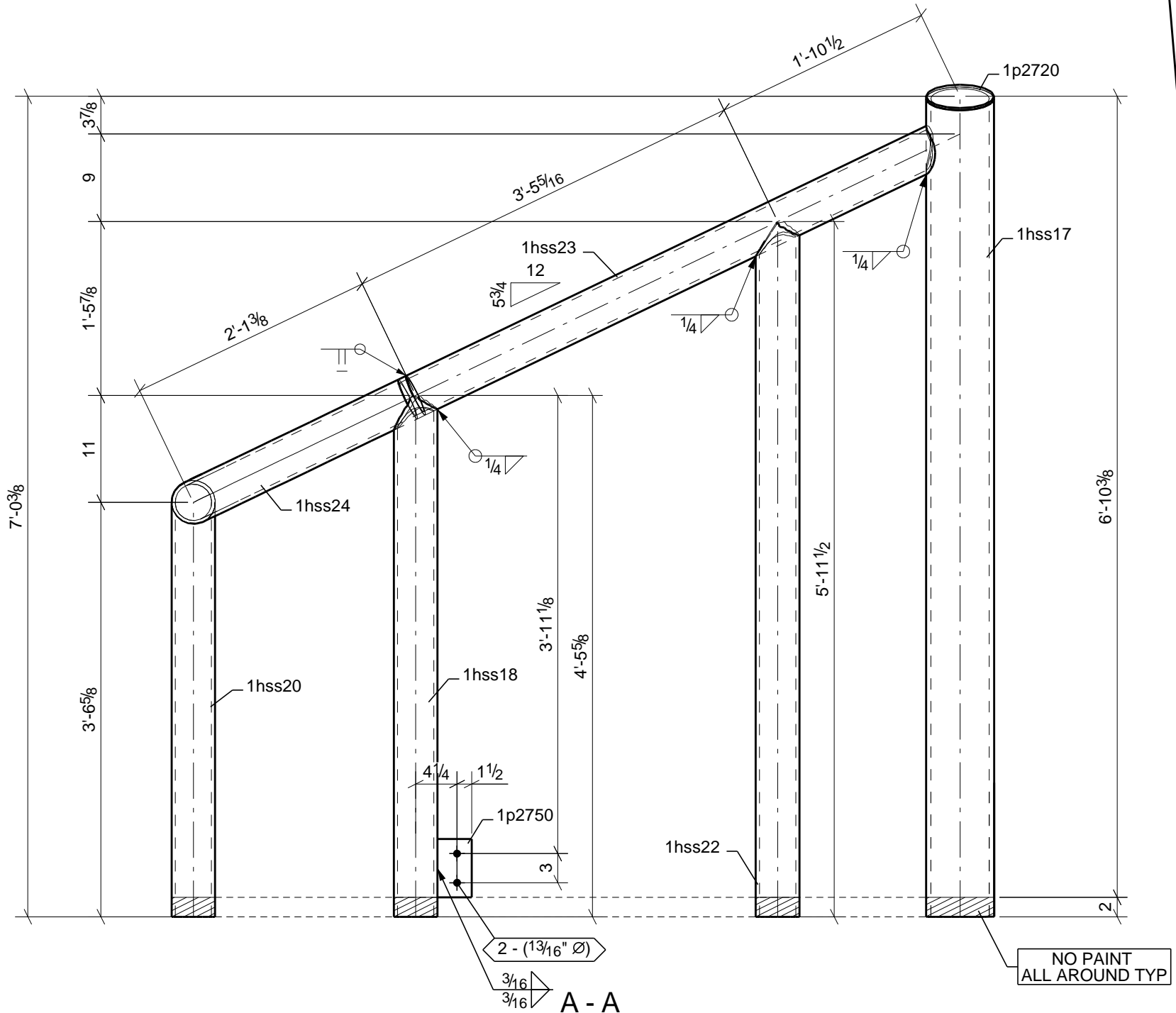
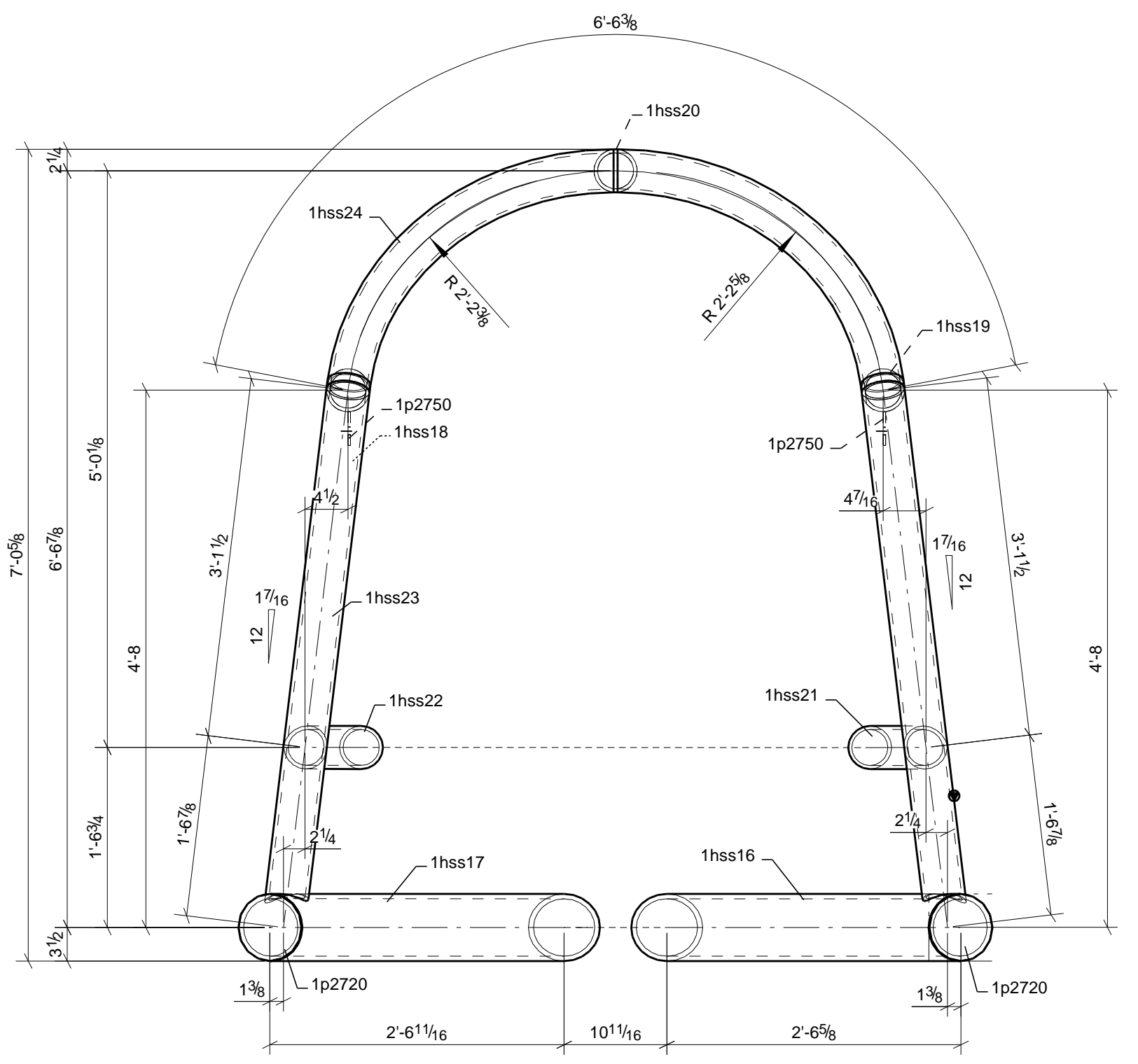
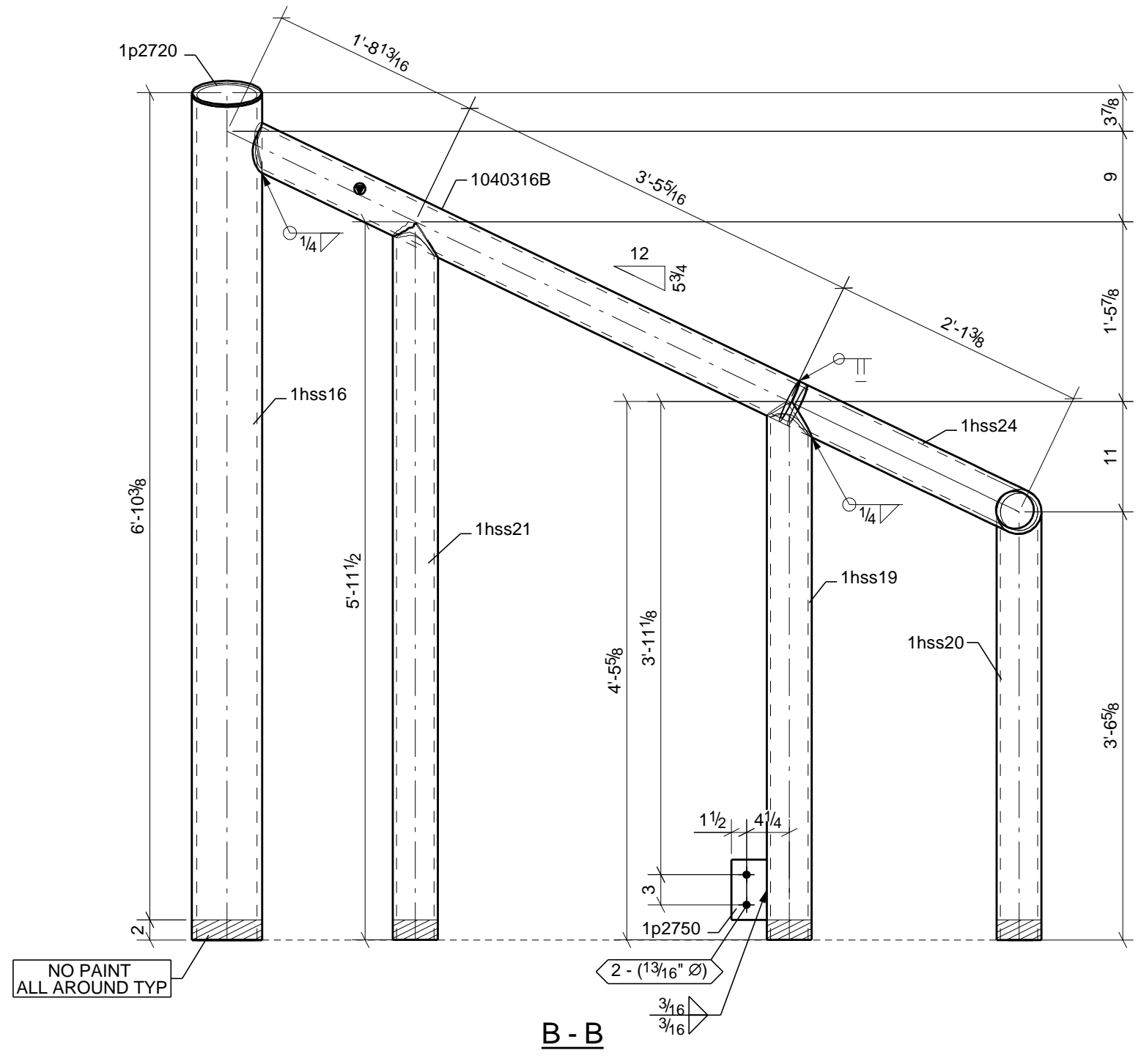
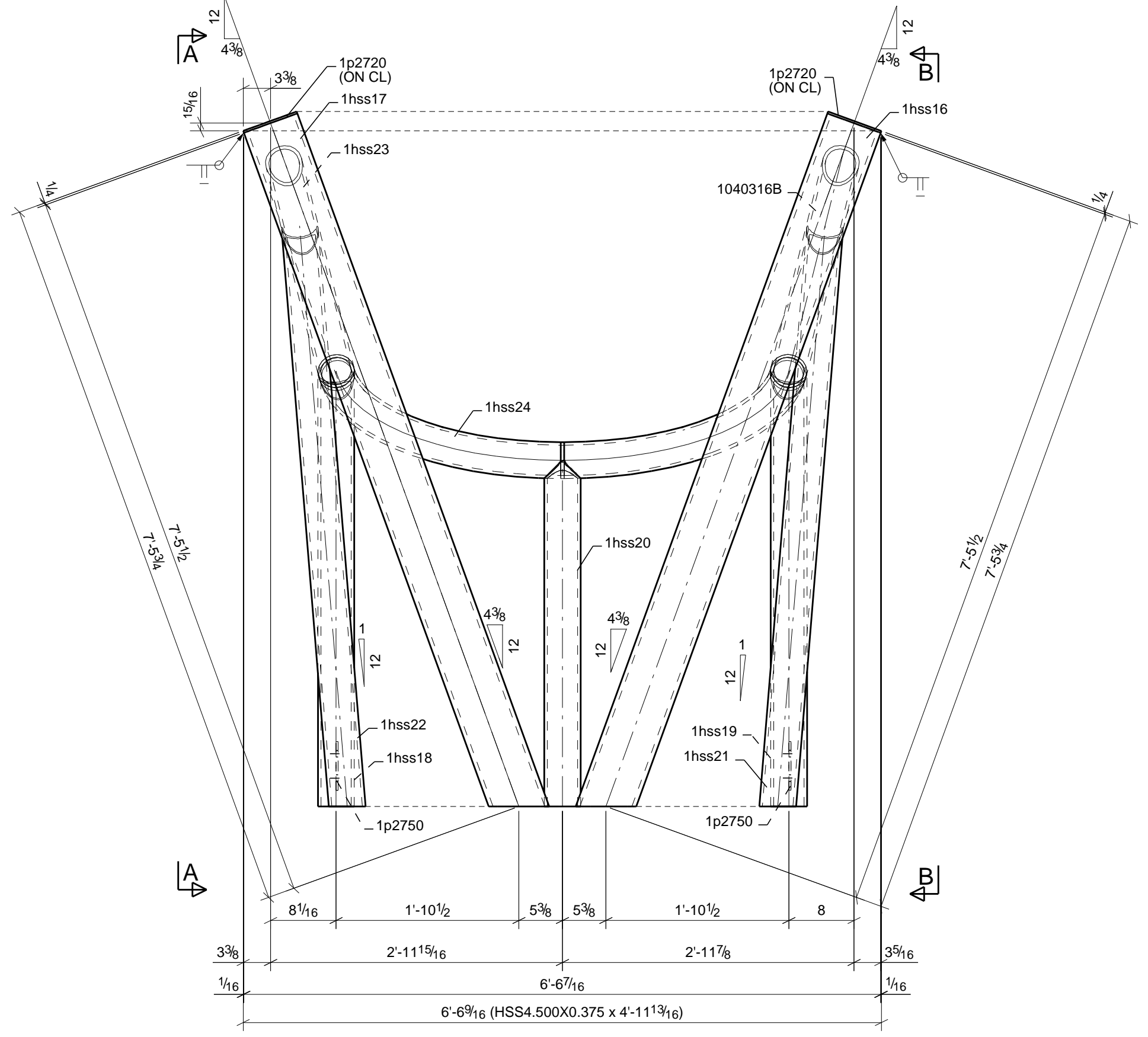


LOCATION					
MARK	QTY	T.O.S	GRID REF	SEQ	REF.
1040316B	1	6745-8'1/8	Ad-Ap5-4.5	10403	E1040300



3D VIEW



SHOP NOTE:  
GRIND SMOOTH ALL BURRS,  
WELDS & ROUGH EDGES.

1 BEAM MARK: 1040316B

BILL OF MATERIAL

SEQ.	UNIT	QTY	SHIP MARK	PIECE MARK	SHAPE	FIN	STEEL GRADE	LENGTH	REMARKS	WT.E.A.	ASSY
10403	ONE	1	1040316B		BEAM						1179
		1		1040316B	HSS4 500X0.375		A500-GRC	4'-11 13/16"	CSSE	80	
		1		1hss16	HSS1X 500		A892	7'-6 13/16"	BC1E	256	
		1		1hss17	HSS1X 500		A892	7'-6 13/16"	BC1E	256	
		1		1hss18	HSS4 500X0.375		A500-GRC	4'-5 5/8"	CSSE	70	
		1		1hss19	HSS4 500X0.375		A500-GRC	4'-5 5/8"	CSSE	70	
		1		1hss20	HSS4 500X0.375		A500-GRC	3'-6 5/8"	CSSE	56	
		1		1hss21	HSS4 500X0.375		A500-GRC	5'-11 15/16"	BC1E	95	
		1		1hss22	HSS4 500X0.375		A500-GRC	5'-11 15/16"	BC1E	95	
		1		1hss23	HSS4 500X0.375		A500-GRC	4'-11 13/16"	CSSE	80	
		1		1hss24	HSS4 500X0.375		A500-GRC	6'-10 7/8"	CSSE	112	
		2		1p2720	PL1/4"X7"		A572-50	0'-7"	CSSE	5	
		2		1p2750	PL1/4"X3 1/2"		A36	0'-6"	CSSE	3	

**DRAKE-WILLIAMS STEEL, Inc.**  
1602 N. 11th Street  
Omaha, Nebraska 68110  
(402) 342-1043

- NOTES:
1. ALL MAT'L ASTM A36 U.N.
  2. EXTENSION DIMENSIONS ARE TO Ⓢ
  3. TOLERANCES: AISC U.N.
  4. ALL GAS RE-ENTRANT CUTS SHALL HAVE A RADIUS PER AISC U.N.
  5. REF. AWS TABLE 7.2 or EQUIP. MFG.
  6. ALL HOLES NOTED S.C./CLASS B ARE FOR SLIP CRITICAL CONNECTIONS. DO NOT ADD PAINT TO CONTACT SURFACES. CONTACT SURFACES ARE TO BE FREE OF BURRS AND ALL FOREIGN MATERIAL AND CLEANED TO SSPC-SP6 OR BETTER.
  7. OPEN HOLES: 13/16" U.N.
  8. SURFACE PREP: SSPC-SP6
  9. PAINT: SHERWIN WILLIAMS B86-310 Series Pro Cryl Universal Primer
  10. PAINT OPEN HOLES U.N. S.C./CLASS B
  11. WELD ELECTRODES: E70XXLH U.N.
  12. WELD A706 REBAR: E80 ELECTRODES



REV	DATE	DESCRIPTION	DET	PKU	DATE
0	01/19/2026	ISSUED FOR FABRICATION		PKU	14-01-26
A	12/15/2025	ISSUED FOR APPROVAL		TD	14-01-26

JOB: CMZ Giraffe Exhibit & Gift Shop JOB NO: 6689 SHEET NO: 1040316B

CUSTOMER: iCON CONSTRUCTION COLORADO

HOLE PATTERNS NOTED "SLIP CRITICAL/SC CLASS A/SC CLASS B/SC CLASS C" SHALL BE PREPARED TO SATISFY SC CONNECTIONS. THE CONTACT SURFACE (CONNECTION SIDE) SHALL BE UNCOATED WITHIN 3" OF THOSE HOLES. CONTACT SURFACES ARE TO BE FREE OF BURRS AND ALL FOREIGN MATERIAL.