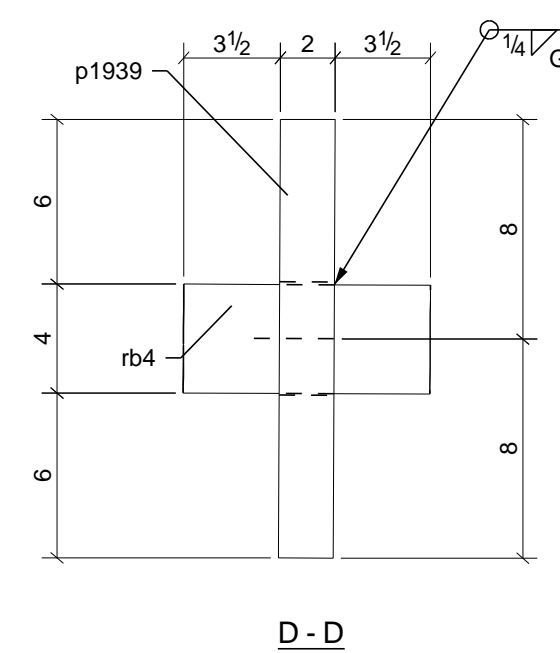
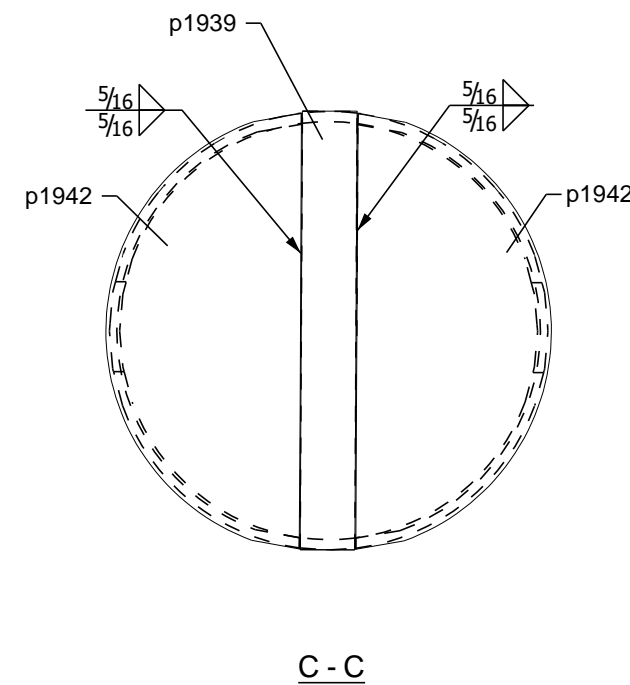
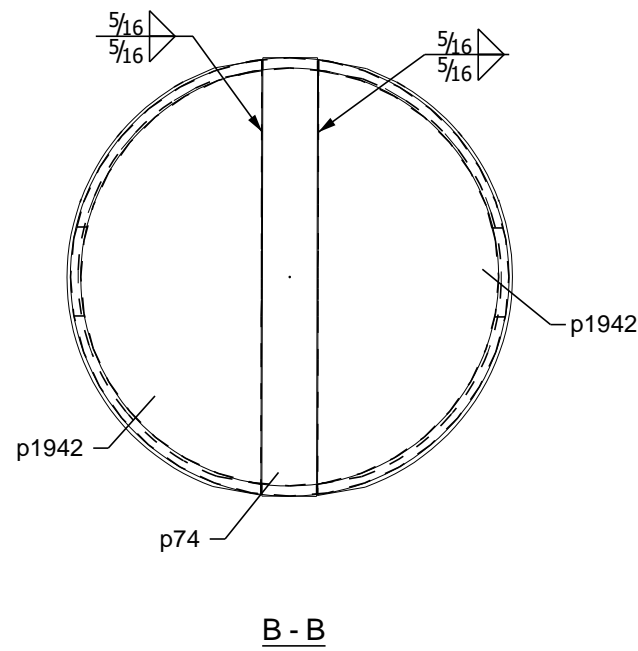
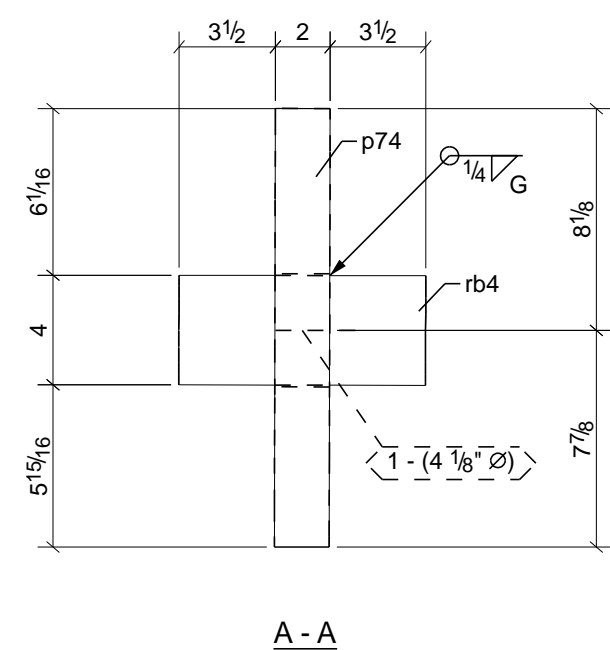
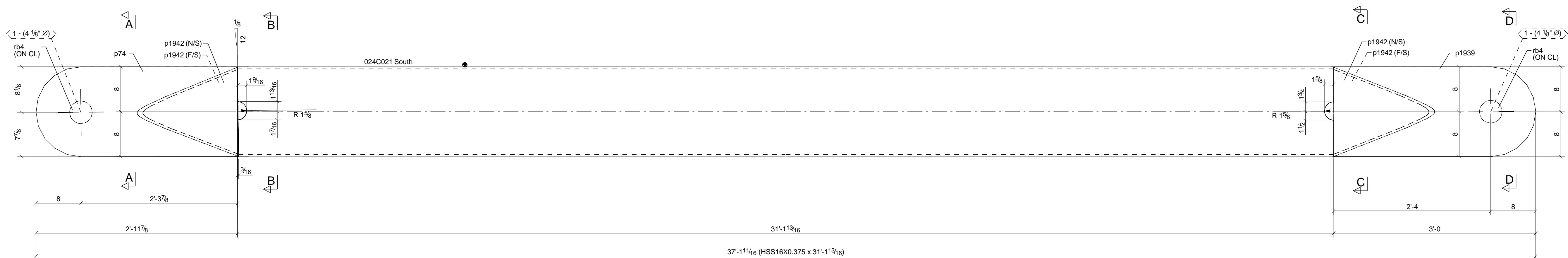


MARK	QTY	DESCRIPTION	LENGTH	WEIGHT	REMARKS	GRADE
024C021	1	COLUMN			SQ-2 G	
024C021	1	HSS16X0.375	31'-1 13/16"	1823.4		A500-C
p74	1	PL2"X16 5/16"	3'-0"	310.1		A36
p1939	1	PL2"X16"	3'-0"	310.0		A36
p1942	4	PL3/8"X18 3/8"	1'-7 3/4"	93.5		A36
rb4	2	ROD4"	0'-9"	63.1		A36
WEIGHT EACH ASSEMBLY				2600.1	TOTAL WEIGHT THIS DRAWING	2600.1



NOTE:  
 SEAL WELD  
 ALL JOINTS  
 IF REQ'D.

HOLE PATTERNS NOTED "SLIP CRITICAL/SC CLASS A/SC CLASS B/SC CLASS C" SHALL BE PREPARED TO SATISFY SC CONNECTIONS. THE CONTACT SURFACE (CONNECTION SIDE) SHALL BE UNCOATED WITHIN 3' OF THOSE HOLES. CONTACT SURFACE ARE TO BE FREE OF BURRS AND ALL FOREIGN MATERIAL.

REV	DATE	ISSUED FOR APPROVAL	REMARKS	BY
0	2025/07/21	ISSUED FOR FABRICATION		TD
A	2025/06/13	ISSUED FOR APPROVAL		MSZ

Fargo, ND  
 West Fargo, ND  
 Mandan, ND  
 Rapid City, SD  
 Billings, MT  
 Lubbock, TX

**TrueNorth Steel**

TrueNorthSteel.com

BACK CHARGES WILL NOT BE HONORED WITHOUT PRIOR AUTHORIZATION  
 These drawings have been prepared in accordance with the AISC Code of Standard Practice

PLB0031  
 Job No.  
 DVP  
 Drawn By  
 APC  
 Checked By  
 024C021  
 Sheet No.

**FOR ERECTION**  
 Ector County Middle School  
 34 Block 43, Ector County, TX 79763