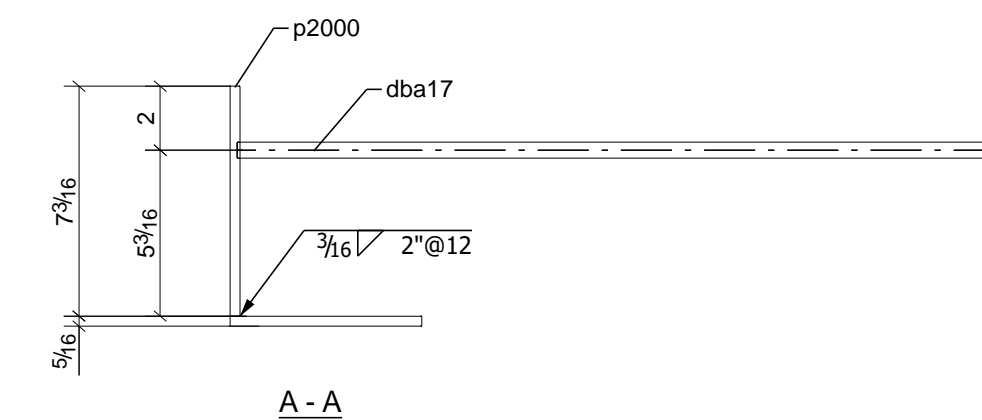
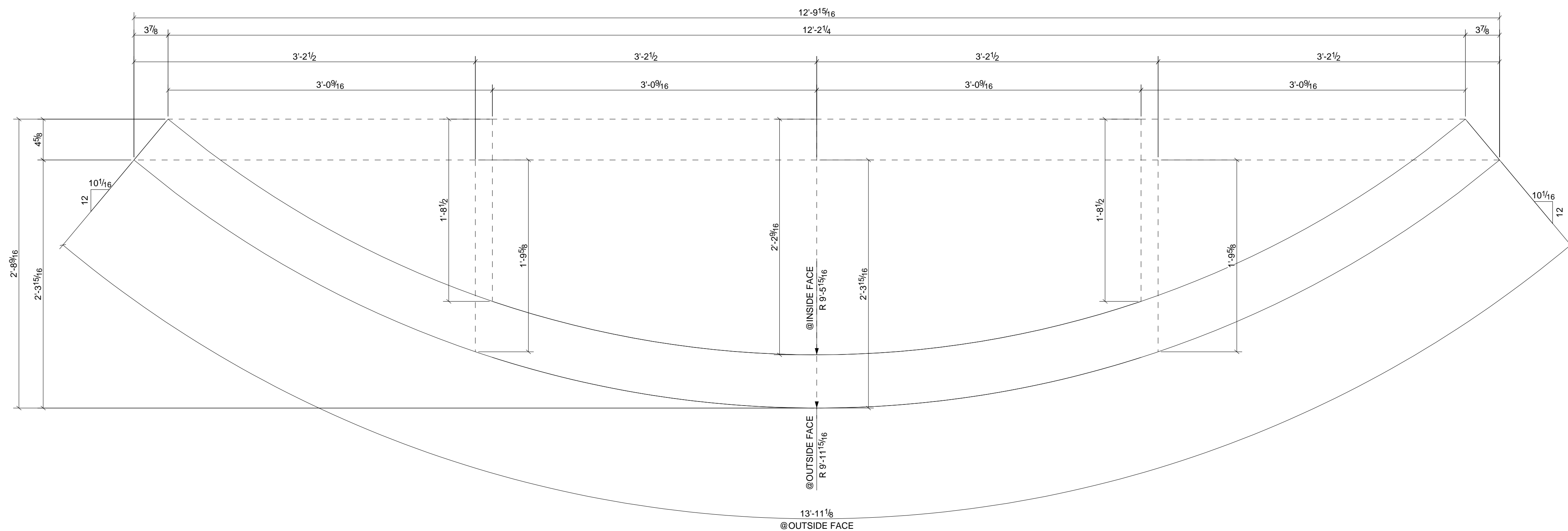
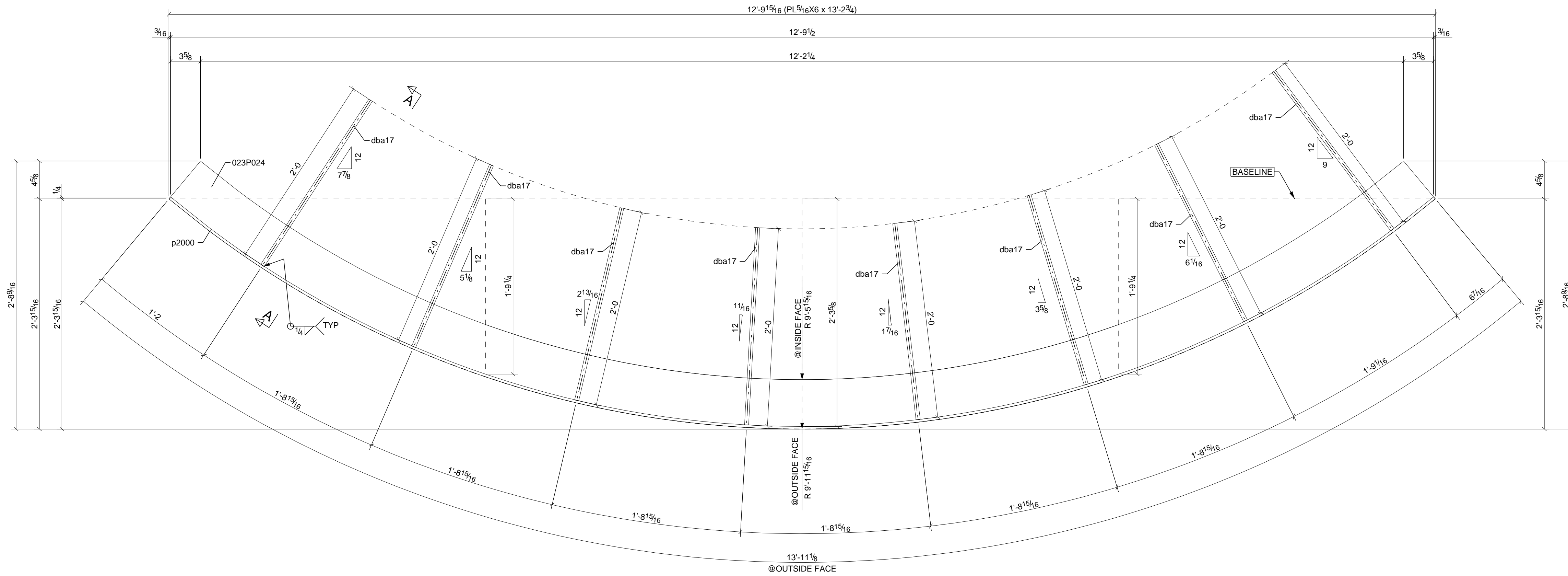
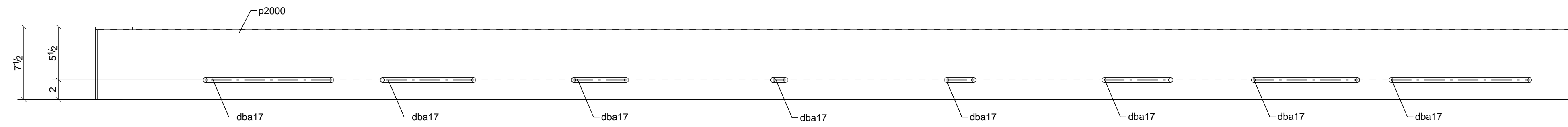


MARK	QTY	DESCRIPTION	LENGTH	WEIGHT	REMARKS	GRADE
023P024	1	PLATE			N	
023P024	1	PL5/16"X6"	13'-2 3/4"	86.6		A36
dba17	8	DBA 1/2	2'-0"	9.6		A706
p2000	1	PL5/16"X7 3/16"	13'-10 11/16"	106.3	ROLLED	A36
WEIGHT EACH ASSEMBLY				202.5	TOTAL WEIGHT THIS DRAWING	202.5



HOLE PATTERNS NOTED "SLIP CRITICAL/SC CLASS A/SC CLASS B/SC CLASS C" SHALL BE PREPARED TO SATISFY SC CONNECTIONS. THE CONTACT SURFACE (CONNECTION SIDE) SHALL BE UNCOATED WITHIN 3' OF THOSE HOLES. CONTACT SURFACE ARE TO BE FREE OF BURRS AND ALL FOREIGN MATERIAL.

0	2025/06/13	ISSUED FOR FABRICATION	LM
A	2025/03/27	ISSUED FOR APPROVAL	KWE
REV	DATE	REMARKS	BY
		SHOP NOTCH / COPE: 1/2" RAD. U.N.	
		BOLTS: 3/4" A325N U.N.	
		WELDS: E70XX	
		FINISH: NO PAINT	
		PRIMER: NO PAINT	
		SURF. PREP.: SSPC-SP2 (Hand Tool Cleaning) U.N.	

Fargo, ND
 West Fargo, ND
 Mandan, ND
 Rapid City, SD
 Ellings, MT
 Lubbock, TX

TrueNorthSteel
 TrueNorthSteel.com

BACK CHARGES WILL NOT BE HONORED WITHOUT PRIOR AUTHORIZATION
 These drawings have been prepared in accordance with the AISC Code of Standard Practice

FOR ERECTION

Ector County Middle School
 34 Block 43, Ector County, TX 79763

PLB0031
 DVP
 Drawn By
 APC
 Checked By
 023P024
 Sheet No.