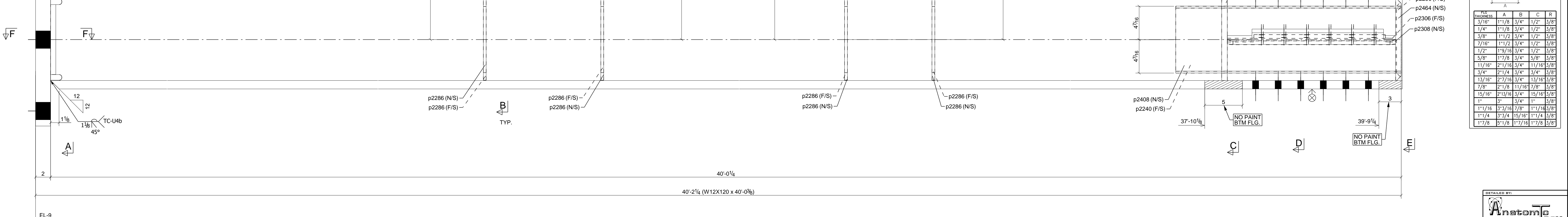
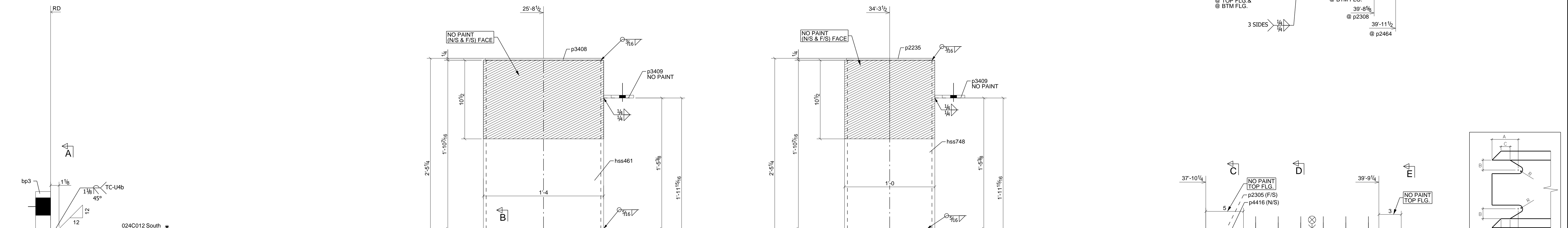
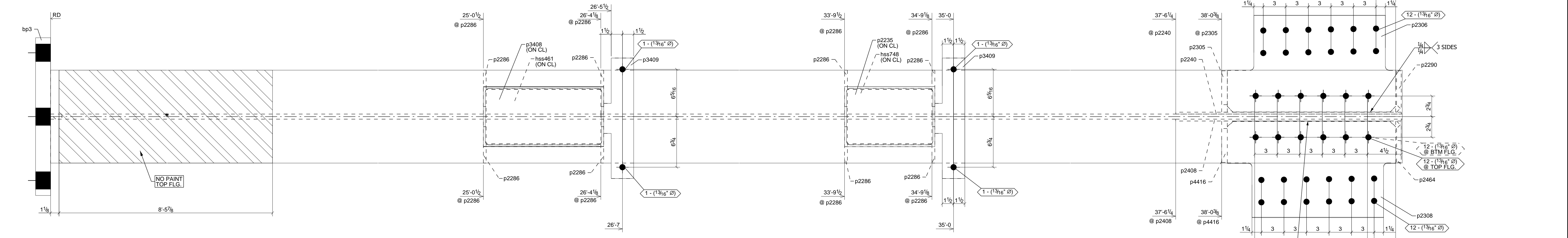


GRID LOCATION TOS ELEVATION  
 \*H2 39'-5"3/8

MARK	QTY	DESCRIPTION	LENGTH	WEIGHT	REMARKS	GRADE
024C012	1	COLUMN			SQ-2 P1	
024C012	1	W12X120	40'-0.38"	4773.1		A992
bp3	1	PL2"x21"	1'-11"	274.0		A572-50
hss461	1	HSS16X8X3/8	1'-10.7/16"	95.8		A500-C
hss748	1	HSS12X8X3/8	1'-10.7/16"	84.0		A500-C
p2235	1	PL1/4"x7' 1/2"	0'-11.1/2"	6.1		A36
p2240	1	PL1/4"x8' 7/8"	2'-6"	18.4		A36
p2286	8	PL3/8"x5' 7/8"	0'-10.13/16"	52.9		A36
p2290	1	PL3/4"x5' 1/2"	0'-10.7/8"	11.5		A572-50
p2305	1	PL3/4"x5' 1/2"	0'-10.7/8"	12.5		A572-50
p2306	1	PL1/2"x12' 7/8"	1'-10.3/8"	35.8		A36
p2308	1	PL1/2"x12' 7/8"	1'-10.3/8"	35.8		A36
p2408	1	PL1/4"x8' 7/8"	2'-6"	18.4		A36
p2464	1	PL3/4"x5' 1/2"	0'-10.7/8"	11.5		A572-50
p3408	1	PL1/4"x7' 1/2"	1'-3.1/2"	8.2		A36
p3409	2	PL3/8"x4"	1'-4"	11.1		A36
p4416	1	PL3/4"x5' 1/2"	0'-10.7/8"	12.5		A572-50
WEIGHT EACH ASSEMBLY				5461.5	TOTAL WEIGHT THIS DRAWING	5461.5



THICKNESS	A	B	C	R
3/16"	1 1/8"	3/4"	1/2"	3/8"
1/4"	1 1/8"	3/4"	1/2"	3/8"
3/8"	1 1/2"	3/4"	1/2"	3/8"
7/16"	1 1/2"	3/4"	1/2"	3/8"
1/2"	1 9/16"	3/4"	1/2"	3/8"
5/8"	1 7/8"	3/4"	5/8"	3/8"
11/16"	2 1/16"	3/4"	11/16"	3/8"
3/4"	2 1/4"	3/4"	3/4"	3/8"
13/16"	2 7/16"	3/4"	13/16"	3/8"
7/8"	2 1/2"	11/16"	7/8"	3/8"
15/16"	2 11/16"	3/4"	15/16"	3/8"
1"	3"	3/4"	1"	3/8"
1 1/16"	3 3/4"	3/4"	1 1/16"	3/8"
1 1/8"	3 3/4"	15/16"	1 1/8"	3/8"
1 1/4"	3 3/4"	1 1/4"	1 1/4"	3/8"

HOLE PATTERNS NOTED "SLIP CRITICAL/SC CLASS A/SC CLASS B/SC CLASS C" SHALL BE PREPARED TO SATISFY SC CONNECTIONS. THE CONTACT SURFACE (CONNECTION SIDE) SHALL BE UNCOATED WITHIN 3' OF THOSE HOLES. CONTACT SURFACE ARE TO BE FREE OF BURRS AND ALL FOREIGN MATERIAL.

WORK THIS DRAWING WITH CONJUNCTION WITH 024C012-1

REV	DATE	ISSUED FOR FABRICATION	ISSUED FOR APPROVAL	REMARKS	BY	TD
0	2025/07/21	ISSUED FOR FABRICATION				MSZ
A	2025/06/13	ISSUED FOR APPROVAL				MSZ

Fargo, ND  
 West Fargo, ND  
 Mandan, ND  
 Rapid City, SD  
 Billings, MT  
 Lubbock, TX

**TrueNorthSteel**  
 TrueNorthSteel.com

BACK CHARGES WILL NOT BE HONORED WITHOUT PRIOR AUTHORIZATION  
 These drawings have been prepared in accordance with the AISC Code of Standard Practice

**FOR ERECTION**

Ector County Middle School  
 34 Block 43, Ector County, TX 79763

PLB0031  
 DVP  
 Checked By: APC  
 024C012  
 Sheet No.