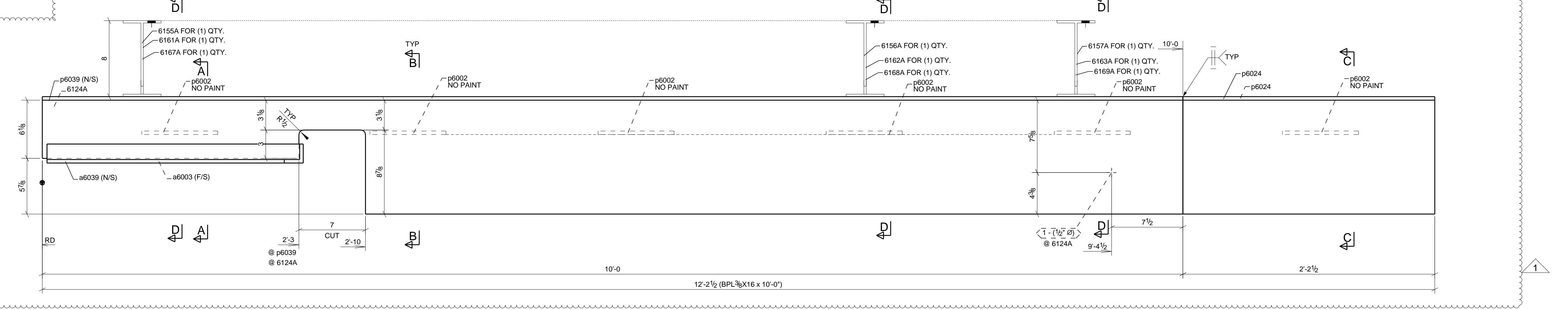
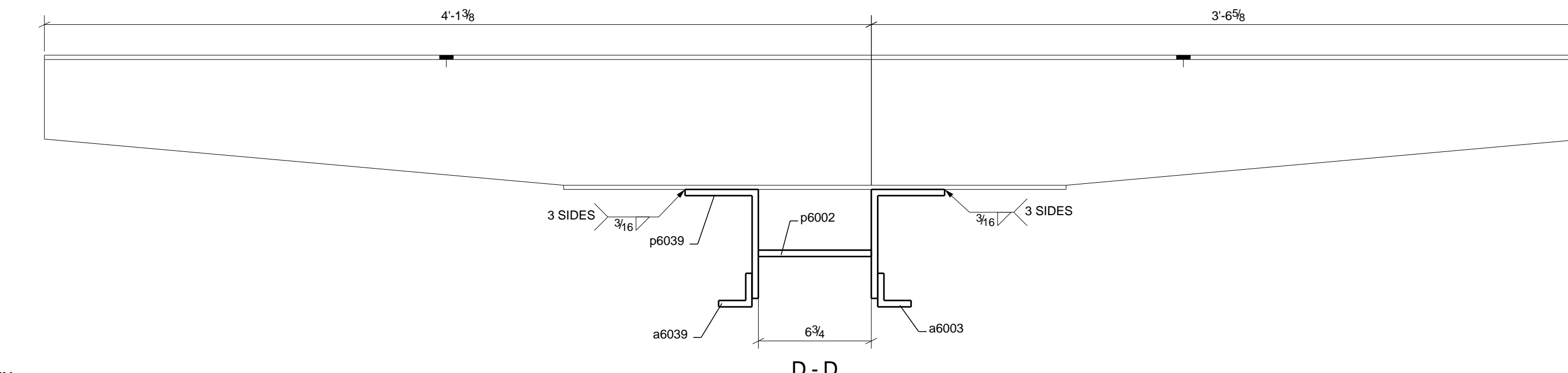
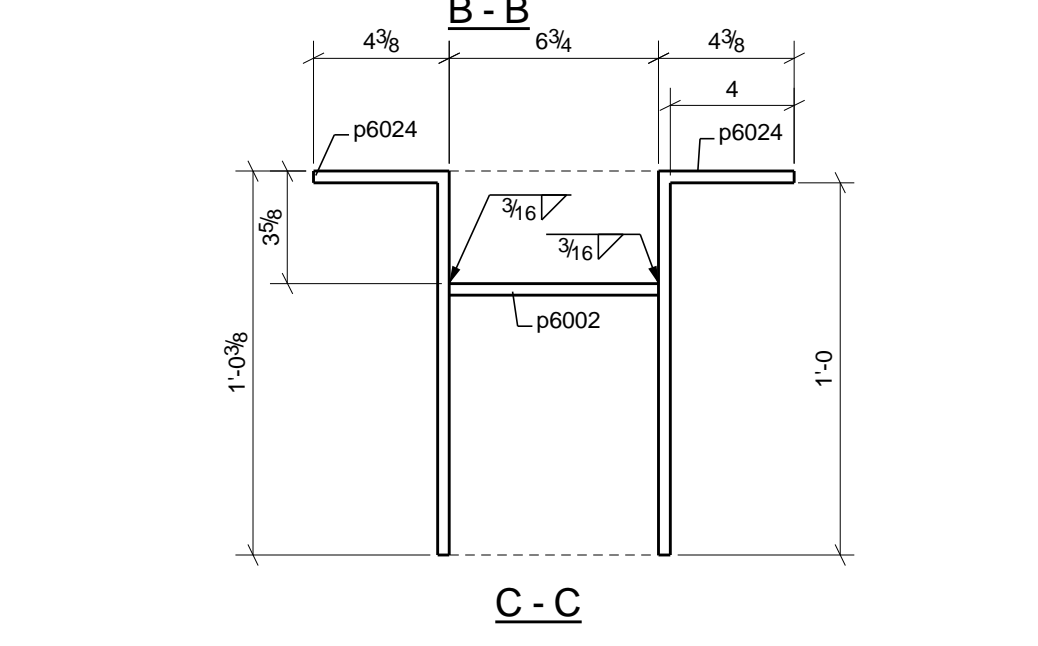
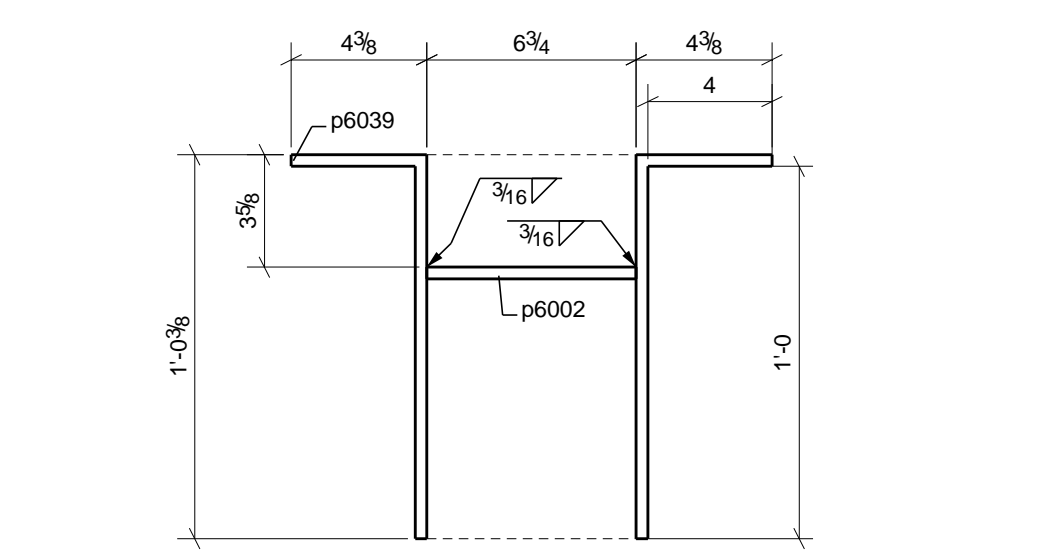
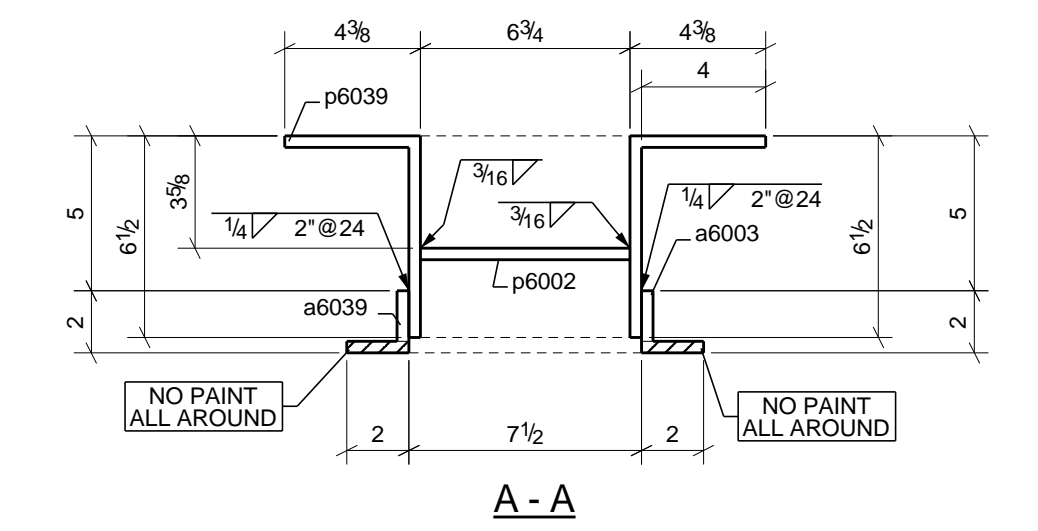
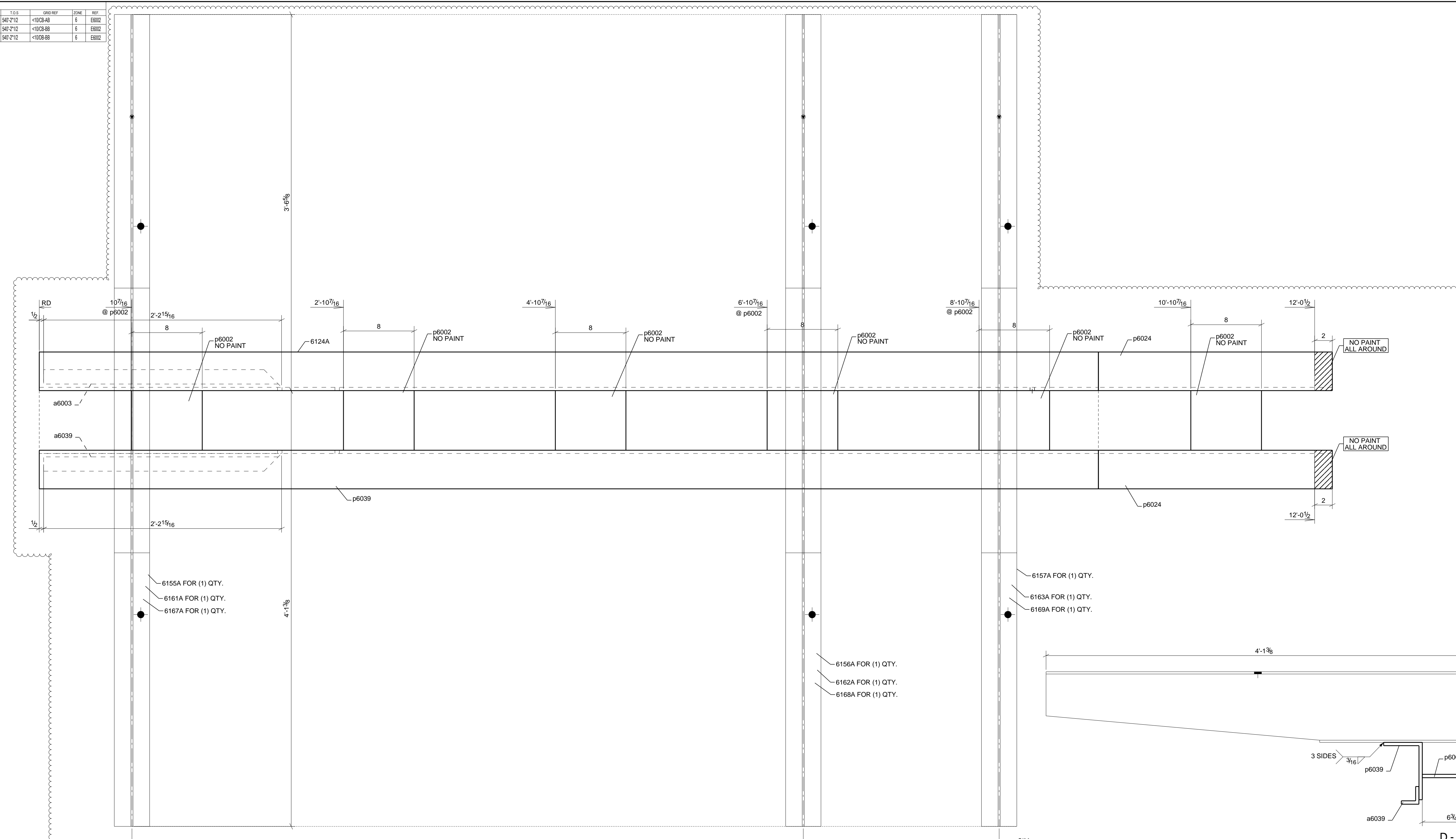


MARK	QTY	T.O.S	GRID REF	ZONE	REF
6124A	1	50'-2 1/2"	<C>D8-B8	6	E6002
6124B	1	50'-2 1/2"	<C>D3-B8	6	E6002
6124C	1	50'-2 1/2"	<C>D8-B8	6	E6002

BILL OF MATERIAL									
NO. REQD	SHIPPING MARK	ASSY MARK	DESCRIPTION	UNIT	GRADE	WEIGHT	REMARKS		
3	6124A	6124A	PLATE	10' F	A572-GR-50	557	BEF	COSE	
3	a6003	L200B	ANGLE	2' F	A36	30	BEF	SCIE	
3	a6039	L200B	ANGLE	2' F	A36	30	BEF	SCIE	
18	p6002	PLATE	PLATE	1' F	A572-GR-50	103	BEF	COSE	
6	p6024	PLATE	PLATE	2' F	A572-GR-50	277	BEF	COSE	
3	p6039	PLATE	PLATE	10' F	A572-GR-50	557	BEF	COSE	
						TOTAL =	1554		



LEG. LENGTH DIMENSIONS FOR BENT PLATE ARE TO INSIDE BENDLINE.

SHOP NOTE:  
ALL WELDS SHALL HAVE A FILLER METAL WITH CHARPY V-NOTCH TOUGHNESS OF 20 FT/LBS AVERAGE AT -20 DEGREES FAHRENHEIT AND 40 FT/LBS @ 70 DEGREES FAHRENHEIT. CERTIFY CONFORMANCE TO CHARPY V-NOTCH TOUGHNESS REQUIREMENTS WITH TESTS BY AN INDEPENDENT TESTING LABORATORY.

HOLE PATTERNS NOTED 'SLIP CRITICAL' CLASS AND CLASS 'B' CLASS OF SHALL BE PREPARED TO SATISFY SC CONNECTIONS. THE CONTACT SURFACE (CONNECTION SIDE) SHALL BE UNCOATED WITHIN 3' OF THOSE HOLES. CONTACT SURFACE ARE TO BE FREE OF BURRS AND ALL FOREIGN MATERIAL. <S> DENOTES FAYING SURFACES.

JOB No.: J-5583

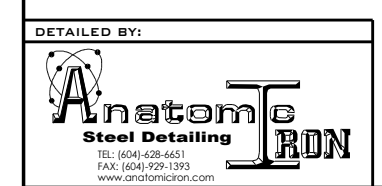
RE-ISSUED FOR FABRICATION  
ISSUED FOR FABRICATION  
RE-ISSUED FOR APPROVAL  
ISSUED FOR APPROVAL

PAINT: Precision Coatings DTM 1300/100 H&B Epoxy Primer, SSPC-89 MATT. SPEC.  
HOLES: REF. DRWG: 0805

**JUNIOR STEEL CO.**  
134 W. 168th St. Gardena, California 90248  
Phone: (310) 856-6868 Lic. No. 825032 Fax: (310) 856-6872

CONTRACTOR: ABBOT Construction  
PROJECT: UCLA Sunset  
LOCATION: 11 EASTON CIRCLE LOS ANGELES, CA 90005

DESCRIPTION: ERECD F.O.B. SHEET REV  
6124A



3 FRAME(S) MARK: 6124A