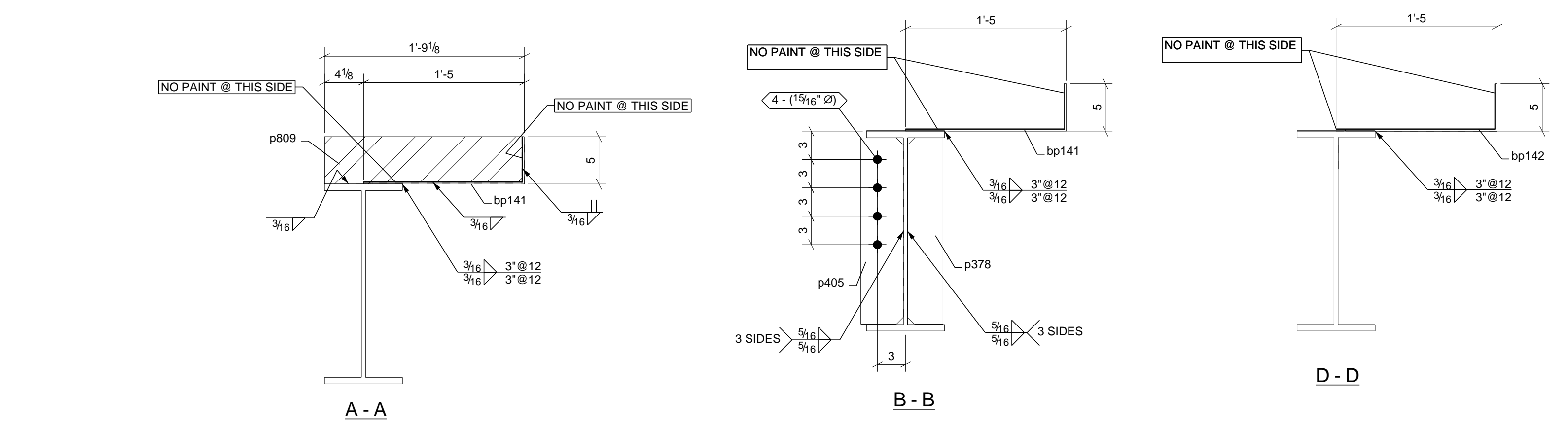
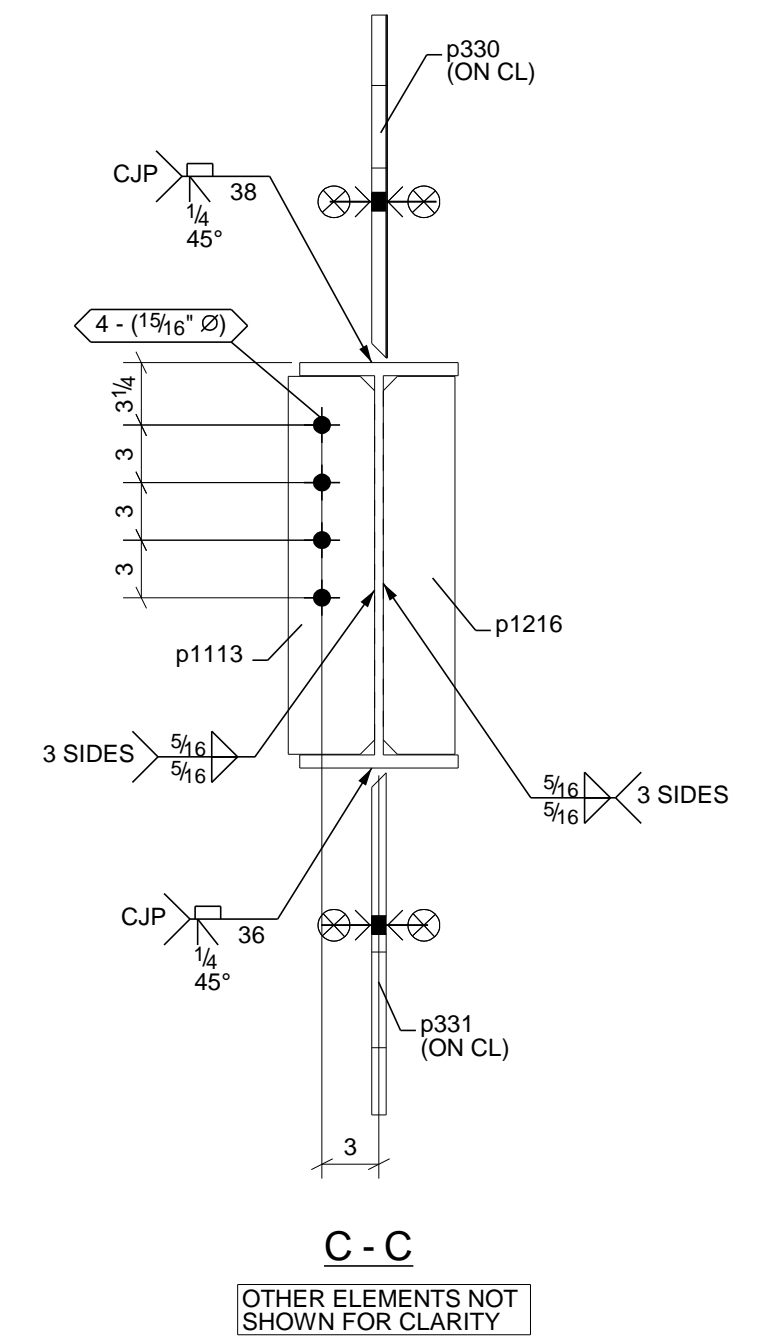
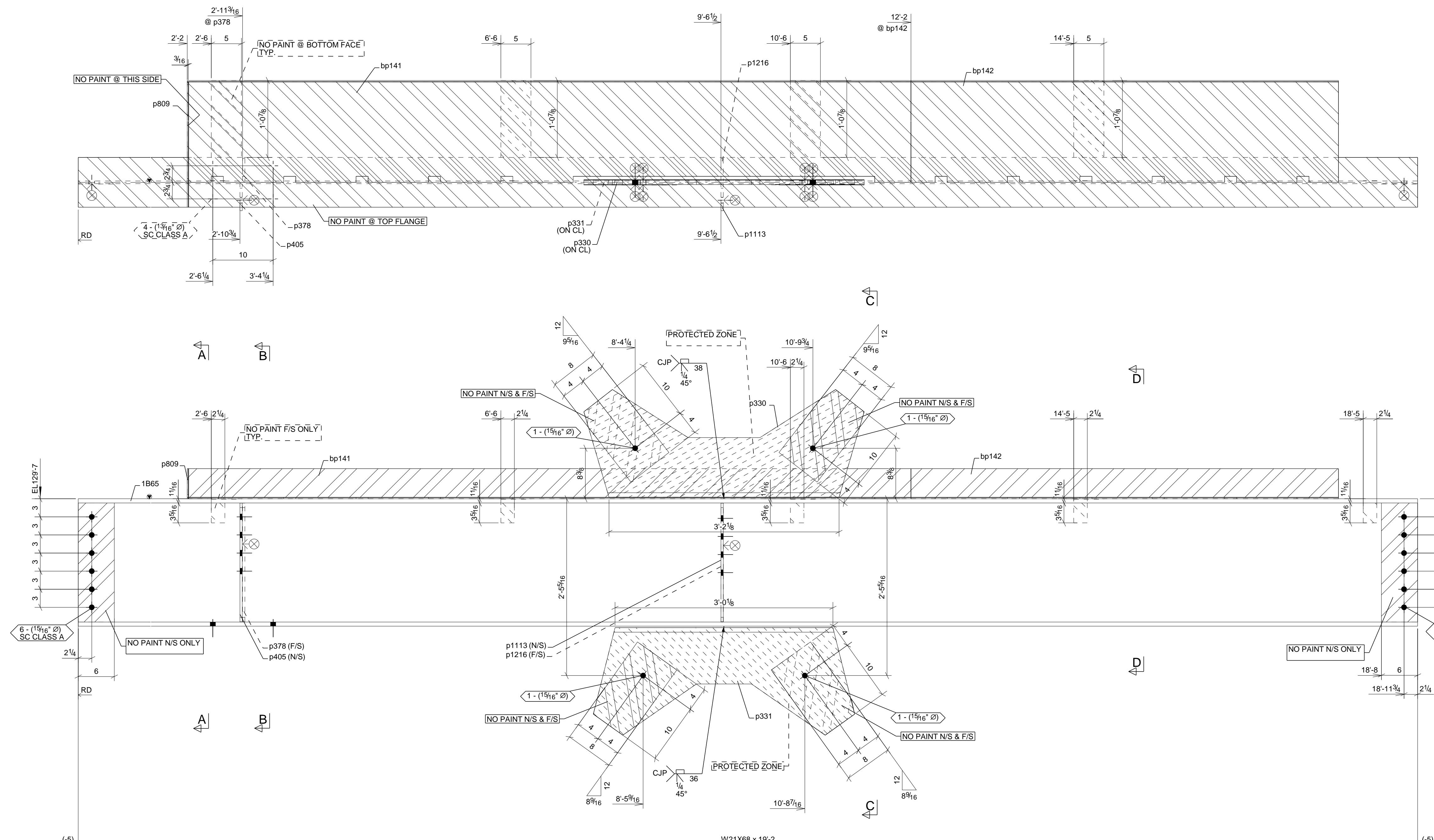
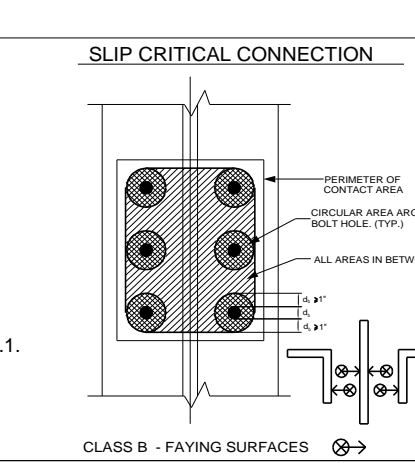


LOCATION					
MARK	QTY	T.O.S	GRID REF	ZONE	REF.
1B65	1	129-7	E2-E3DD	1	E108

BILL OF MATERIAL							
DWG	SHIP	No	SECTION	LENGTH	MATERIAL	REMARKS	WT
No	MARK		DESCRIPTION	FT	IN	GRADE	
1B65	1B65	1	BEAM			SFRS	1785
	1B65	1	W21X68	19	2'	A992	S2E 1304
	bp141	1	PL3/16"X21 5/8"	10	0'	A36	BENT 136
	bp142	1	PL3/16"X21 5/8"	5	10 7/8"	A36	BENT 82
	p330	1	PL3/4"X17 7/8"	3	10 1/2"	A572-GR.50	116
	p331	1	PL3/4"X17 13/16"	3	7 5/16"	A572-GR.50	108
	p378	1	PL3/8"X3 3/4"	1	7 11/16"	A36	8
	p405	1	PL3/8"X4 1/2"	1	7 11/16"	A36	9
	p809	1	PL3/16"X5"	1	8 15/16"	A36	5
	p1113	1	PL3/8"X4 1/2"	1	7 11/16"	A36	9
	p1216	1	PL3/8"X3 3/4"	1	7 11/16"	A36	8
FIELD BOLTS							
	4		3/4" Dia A325TCPLAINHEAVY_HEX	0	2 1/2"	A325SS_TC	SC CLASS A 1
	12		7/8" Dia A325TCPLAINHEAVY_HEX	0	2 1/4"	A325SS_TC	SC CLASS A 2
TOTAL WEIGHT:							1787



**FABRICATOR NOTES:**  
**SEISMIC FORCE RESISTING SYSTEM (SFRS)**  
 A. BOLTED CONNECTIONS (A325-DT1, SC BOLTS):  
 FAYING SURFACES OF SLIP-CRITICAL CONNECTIONS (CLASS B FAYING SURFACE PER BELOW OR APPROVED EQUAL)  
 SURFACE PREPARATION: SSPC-SP8  
 PRIMER COAT: DIMETCOTE 9, 3-4 MILS  
 REF: DW 1802 0001 ITEM H.L.C. AND TABLES 1 AND 2  
 B. CHAMFY V NOTCH TOUGHNESS REQUIREMENTS:  
 ALL MATERIALS DESIGNATED AS PART OF SFRS (SEISMIC FORCE RESISTING SYSTEM) INCLUDING ITS CONNECTIONS SHALL MEET THE EXPECTED MATERIAL STRENGTH REQUIREMENTS OF AISC 341 TABLE A3.1. HOT ROLLED SHAPES WITH FLANGES 1.5" THICK OR THICKER AND PLATES 2" THICK OR THICKER SHALL MEET THE CHAMFY V NOTCH TOUGHNESS REQUIREMENT IN AISC 341 SECTION A.3.3  
 REF: DW 1802 0001 ITEM B.3 NOTE #1



**NO BACK CHARGES WILL BE ACCEPTED WITHOUT PRIOR AUTHORIZATION IN WRITING**  
**NOTE:**  
 FOR ALL DEMAND CRITICAL CJP WELDS, 100% UT SHALL BE PREFORMED.  
 REF: DW 1802 0001 ITEM M NOTE #M2  
 DC - DEMAND CRITICAL WELDS  
 NDE - NON-DESTRUCTIVE EXAMINATION

**SHOP PAINT:**  
 1B65 SHERWIN-WILLIAMS E61AC82 - GRAY, 1MILS DTF MIN.  
 MATERIAL: SSSC  
 BOLT: SSSC-SP3  
 WELD: SSSC-SP3  
 HOLE SIZE: ELECTRODE:

DATE: 08/19/2025	ISSUED FOR FABRICATION
DATE: 05/20/2025	RE-ISSUED FOR APPROVAL
DATE: 02/12/2025	RE-ISSUED FOR APPROVAL
DATE: 12/04/2024	ISSUED FOR APPROVAL

BOZEMAN YELLOWSTONE INTERNATIONAL AIRPORT  
 850 Gallatin Field Rd. Belgrade, MT 59714

ARCH: Hennebery Eddy Architects  
 ENGR: Morrison Maierle  
 CONTR: Martel Construction

REF: SEE LOCATION TABLE  
 DRAWN BY: PK 12/02/2024  
 CHECKED BY: ARO 02/12/2025

JOB NO: 24-083  
 SHEET TITLE: BEAM  
 DWG NO: 1B65

HOLE PATTERNS NOTED 'SLIP CRITICAL/SC CLASS A/SC CLASS B/SC CLASS C' SHALL BE PREPARED TO SATISFY SC CONNECTIONS. THE CONTACT SURFACE (CONNECTION SIDE) SHALL BE UNCOATED WITHIN 3' OF THOSE HOLES. CONTACT SURFACE ARE TO BE FREE OF BURRS AND ALL FOREIGN MATERIAL. ∞ DENOTES FAYING SURFACES