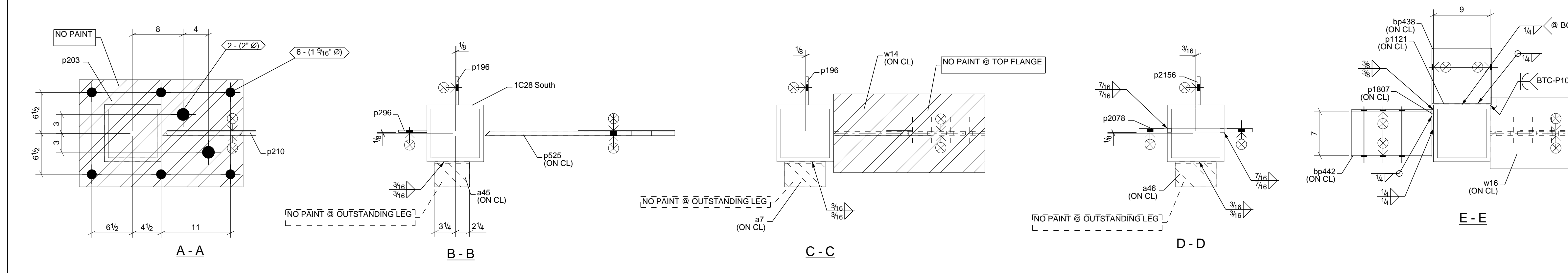
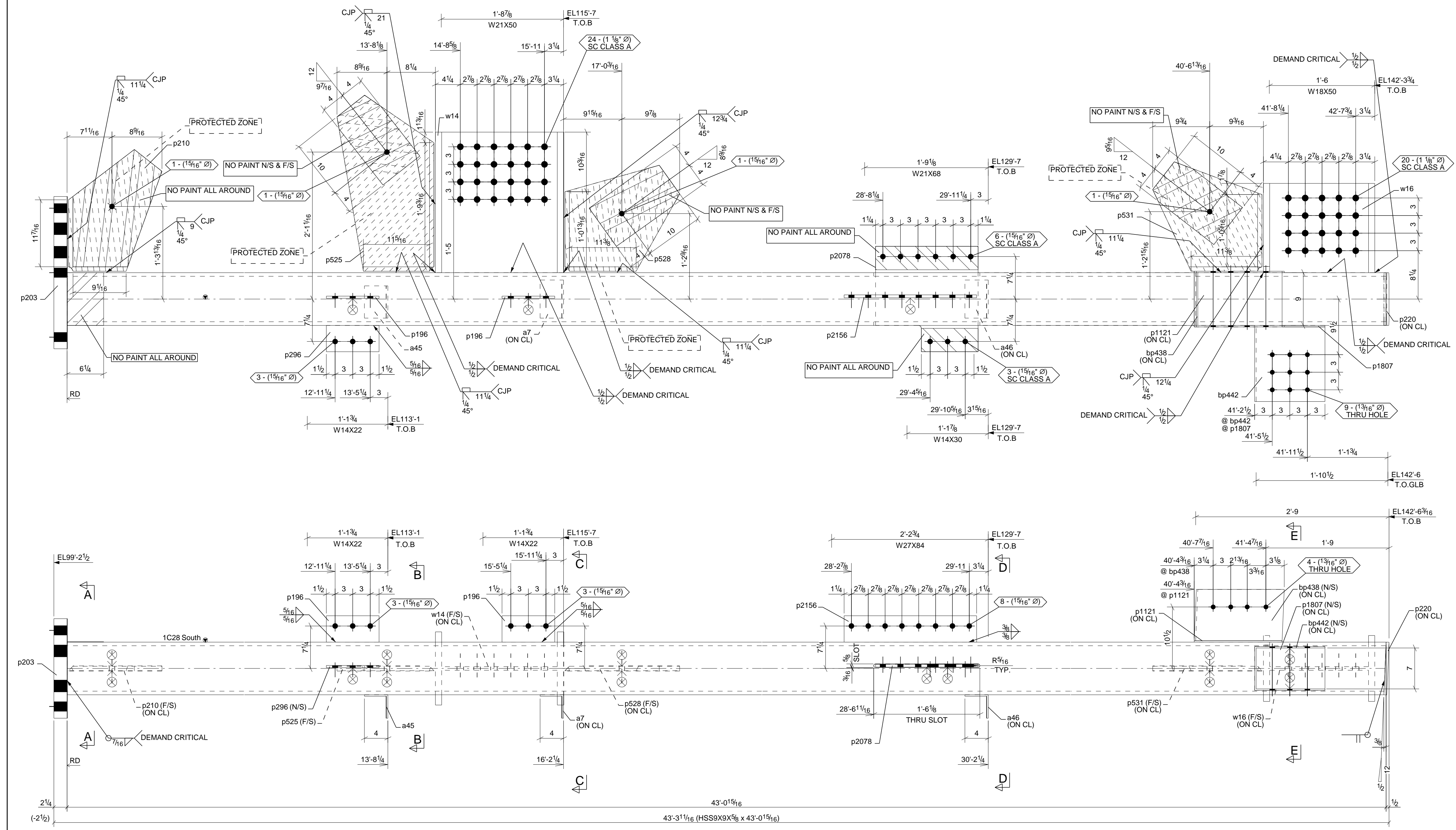


LOCATION				
MARK	QTY	T.O.S	GRID REF	ZONE REF
1C28	1	142-6'3/16	E3DD	1 E04



**SHOP NOTE 1**  
 ALL COMPLETE PENETRATION WELDS SHALL BE MADE WITH FILLER METAL THAT HAS A MINIMUM CVN TOUGHNESS OF 20 FT-LBS AT -20°F AND 40 FT-LBS AT 70°F.

**HOLE PATTERNS NOTED** 'SLIP CRITICAL' SC CLASS A/B/C CLASS 'C' SHALL BE PREPARED TO SATISFY SC CONNECTIONS. THE CONTACT SURFACE (CONNECTION SIDE) SHALL BE UNCOATED WITHIN 3' OF THOSE HOLES. CONTACT SURFACE ARE TO BE FREE OF BURRS AND ALL FOREIGN MATERIAL. ∞ DENOTES FAYING SURFACES

**SHOP PAINT:**  
 1C28 SHERWIN-WILLIAMS E61AC82 - GRAY, 1 MILS DTF MIN.

MATERIAL:	SSPC
BOLT:	SSPC-SP3
WELD:	
HOLE SIZE:	ELECTRODE:

### BILL OF MATERIAL

DWG	SHIP	No	SECTION	LENGTH	MATERIAL	REMARKS	WT
No	MARK		DESCRIPTION	FT	IN	GRADE	
1C28	1C28	1	COLUMN				4146
	1C28	1	HSS9X9X5/8	43	0 15/16"	A500-GR.C	SIE 3064
	a7	1	L4X4X1/4	0	6 1/2"	A36	4
	a45	1	L4X4X1/4	0	5 1/2"	A36	3
	a46	1	L4X4X1/4	0	6 1/2"	A36	4
	bp438	1	PL1/4'X9 3/8"	3	2 1/2"	A36	BENT 24
	bp442	1	PL1/4'X12 3/4"	2	6 1/2"	A36	BENT 28
	p196	2	PL3/8'X4 1/2"	0	9"	A36	9
	p203	1	PL2 1/4'X17"	2	2"	A572-GR.50	282
	p210	1	PL3/4'X15 15/16"	1	8 3/4"	A572-GR.50	46
	p220	1	PL1/2'X9"	0	9"	A36	11
	p296	1	PL3/8'X4 1/2"	0	9"	A36	4
	p525	1	PL3/4'X16 9/16"	2	6 1/16"	A572-GR.50	78
	p528	1	PL3/4'X18 1/16"	1	7 9/16"	A572-GR.50	53
	p531	1	PL3/4'X18 11/16"	1	6 11/16"	A572-GR.50	52
	p1121	1	PL1/4'X9 1/2"	1	3"	A36	10
	p1807	1	PL1/4'X7 1/2"	1	0"	A36	6
	p2078	1	PL1/2'X17 1/2"	1	6"	A36	40
	p2156	1	PL1/2'X4 1/2"	1	10 5/8"	A36	14
	w14	1	W21X132	2	0"	A992	265
	w16	1	W18X119	1	3 1/4"	A992	148
<b>FIELD BOLTS</b>							
	9	3/4" Dia A307PLAINHEX		0	8 1/2"	A307	1
	4	3/4" Dia A307PLAINHEX		0	10 1/2"	A307	2
<b>TOTAL WEIGHT:</b>							<b>4149</b>

08/19/2025	ISSUED FOR FABRICATION
05/20/2025	RE-ISSUED FOR APPROVAL
02/12/2025	RE-ISSUED FOR APPROVAL
12/04/2024	ISSUED FOR APPROVAL

Steel Detailing  
RDN

STEEL FABRICATION • ERECTION • DESIGN

NO BACK CHARGES WILL BE ACCEPTED WITHOUT PRIOR AUTHORIZATION IN WRITING

**NOTE:**  
 FOR ALL DEMAND CRITICAL CJP WELDS, 100% UT SHALL BE PREFORMED.  
 REF: DWG 1832 0001 ITEM 14 NOTE #12  
 DC - DEMAND CRITICAL WELDS  
 NDE - NON-DESTRUCTIVE EXAMINATION

JOB NAME & LOCATION:  
 Bozeman Yellowstone International Airport  
 850 Gallatin Field Rd. Belgrade, MT 59714

ARCH: Hennebery Eddy Architects  
 ENGR: Morrison Maierle  
 CONTR: Martel Construction

REF: SEE LOCATION TABLE

JOB NO: 24-083

DRAWN BY: PK 12/02/2024

CHECKED BY: JCN 02/12/2025

DWG NO: 1C28

**COLUMN**