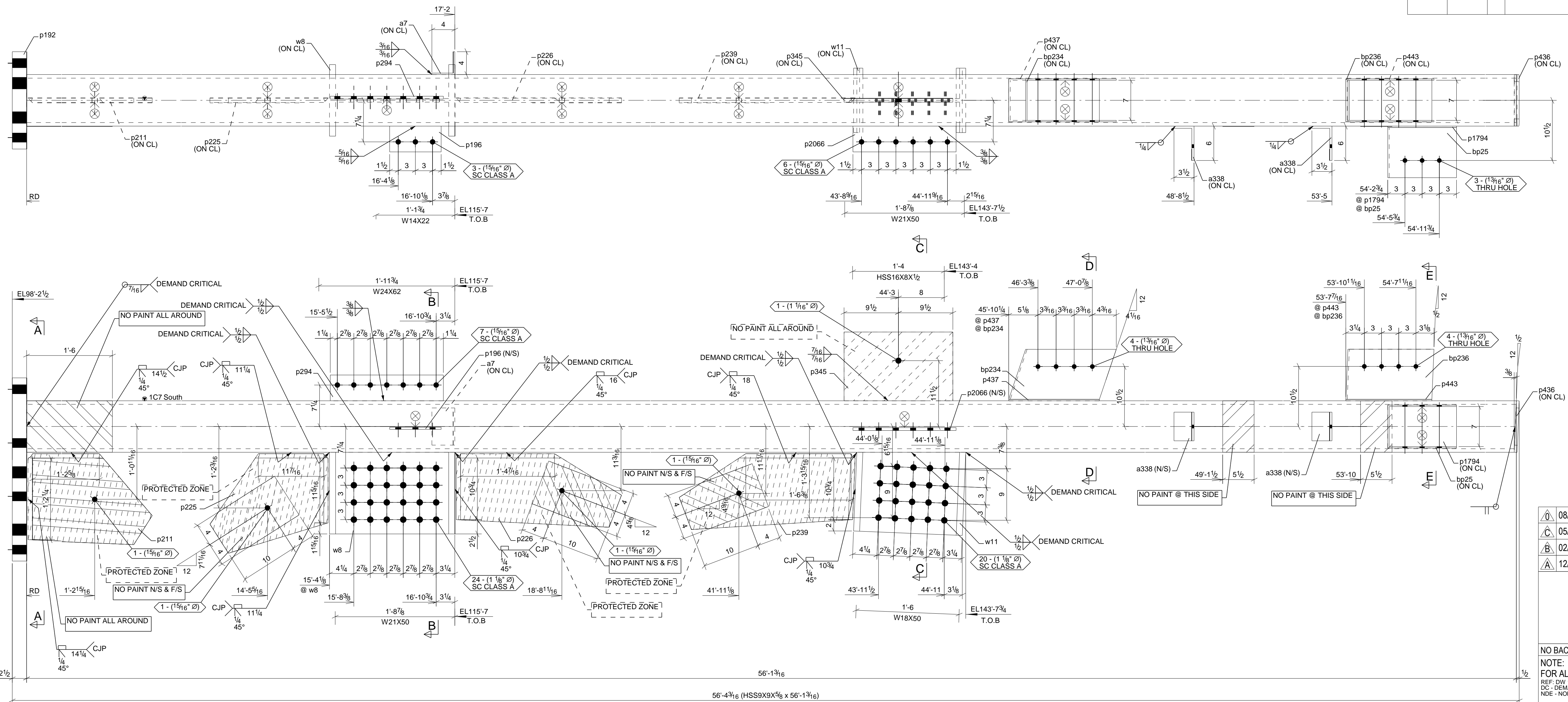
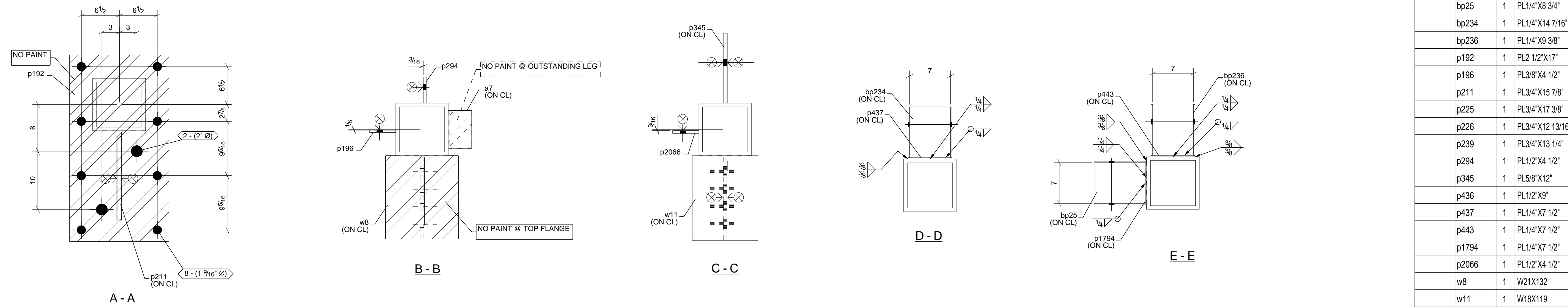


MARK	QTY	T.O.S	GRID REF	ZONE REF
1C7	1	154'-8"11/16	E1/BB	1 E/04

### BILL OF MATERIAL

DWG	SHIP	No	SECTION	LENGTH	MATERIAL	REMARKS	WT
No	MARK		DESCRIPTION	FT	IN	GRADE	
1C7	1C7	1	COLUMN				5108
	1C7	1	HSS9X9X5/8	56	1 3/16"	A500-GR.C	SIE 3996
	a7	1	L4X4X1/4	0	6 1/2"	A36	4
	a338	2	L6X3-1/2X3/8	0	5"	A36	10
	bp25	1	PL1/4"X8 3/4"	2	6 1/2"	A36	BENT 19
	bp234	1	PL1/4"X14 7/16"	3	0 1/2"	A36	BENT 24
	bp236	1	PL1/4"X9 3/8"	3	0 1/2"	A36	BENT 23
	p192	1	PL2 1/2"X17"	2	8"	A572-GR.50	386
	p196	1	PL3/8"X4 1/2"	0	9"	A36	4
	p211	1	PL3/4"X15 7/8"	2	0 11/16"	A572-GR.50	67
	p225	1	PL3/4"X17 3/8"	1	8 5/8"	A572-GR.50	52
	p226	1	PL3/4"X12 13/16"	2	4 7/8"	A572-GR.50	62
	p239	1	PL3/4"X13 1/4"	2	6 11/16"	A572-GR.50	67
	p294	1	PL1/2"X4 1/2"	1	7 3/4"	A36	13
	p345	1	PL5/8"X12"	1	7"	A36	40
	p436	1	PL1/2"X9"	0	9"	A36	11
	p437	1	PL1/4"X7 1/2"	1	3 13/16"	A36	8
	p443	1	PL1/4"X7 1/2"	1	3"	A36	8
	p1794	1	PL1/4"X7 1/2"	1	0"	A36	6
	p2066	1	PL1/2"X4 1/2"	1	6"	A36	11
	w8	1	W21X132	1	2 1/4"	A992	157
	w11	1	W18X119	1	2 1/2"	A992	138
<b>FIELD BOLTS</b>							
	11	3/4" Dia A307PLAINHEX		0	8 1/2"	A307	4
<b>TOTAL WEIGHT:</b>							<b>5112</b>



**SHOP NOTE 1**  
 ALL COMPLETE PENETRATION WELDS SHALL BE MADE WITH FILLER METAL THAT HAS A MINIMUM C/VN TOUGHNESS OF 20 FT-LBS AT -20°F AND 40 FT-LBS AT 70°F.

1 COLUMN MARK: 1C7

HOLE PATTERNS NOTED "SLIP CRITICAL" SHALL BE CLASS A/B/C CLASS SC CLASS C SHALL BE PREPARED TO SATISFY SC CONNECTIONS. THE CONTACT SURFACE (CONNECTION SIDE) SHALL BE UNCOATED WITHIN 3" OF THOSE HOLES. CONTACT SURFACE ARE TO BE FREE OF BURRS AND ALL FOREIGN MATERIAL. ∞ DENOTES FAYING SURFACES

**SHOP PAINT:**  
 1C7 SHERWIN-WILLIAMS E61AC82-GRAY, 1 MILS DTF MIN.  
 MATERIAL: SSSP-SP3  
 BOLT: WELD:  
 HOLE SIZE: ELECTRODE:

08/19/2025	ISSUED FOR FABRICATION
05/20/2025	RE-ISSUED FOR APPROVAL
02/12/2025	RE-ISSUED FOR APPROVAL
12/04/2024	ISSUED FOR APPROVAL



NO BACK CHARGES WILL BE ACCEPTED WITHOUT PRIOR AUTHORIZATION IN WRITING  
 NOTE: FOR ALL DEMAND CRITICAL CJP WELDS, 100% UT SHALL BE PREFORMED.  
 REF: DWG 1832 0001 ITEM 14 NOTE #42  
 DC - DEMAND CRITICAL WELDS  
 ND - NON-DESTRUCTIVE EXAMINATION

JOB NAME & LOCATION: Bozeman Yellowstone International Airport 850 Gallatin Field Rd. Belgrade, MT 59714	ARCH: Hennebery Eddy Architects ENGR: Morrison Maierle CONTR: Martel Construction
--	---

REF: SEE LOCATION TABLE	CHECKED BY: JCN 02/12/2025	JOB NO: 24-083
DRAWN BY: PK 12/02/2024		DWG NO: 1C7
COLUMN		