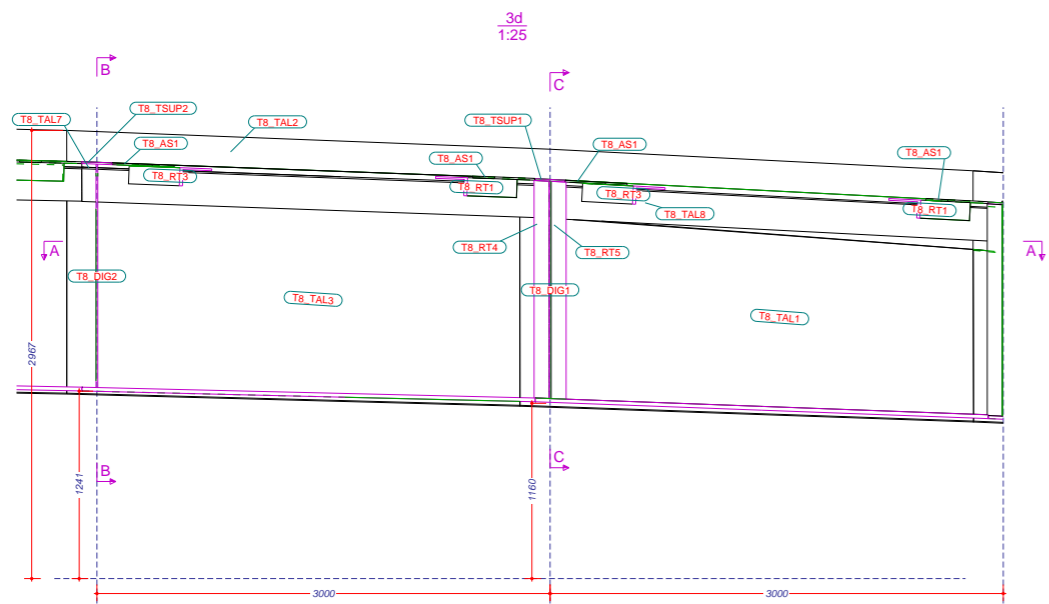
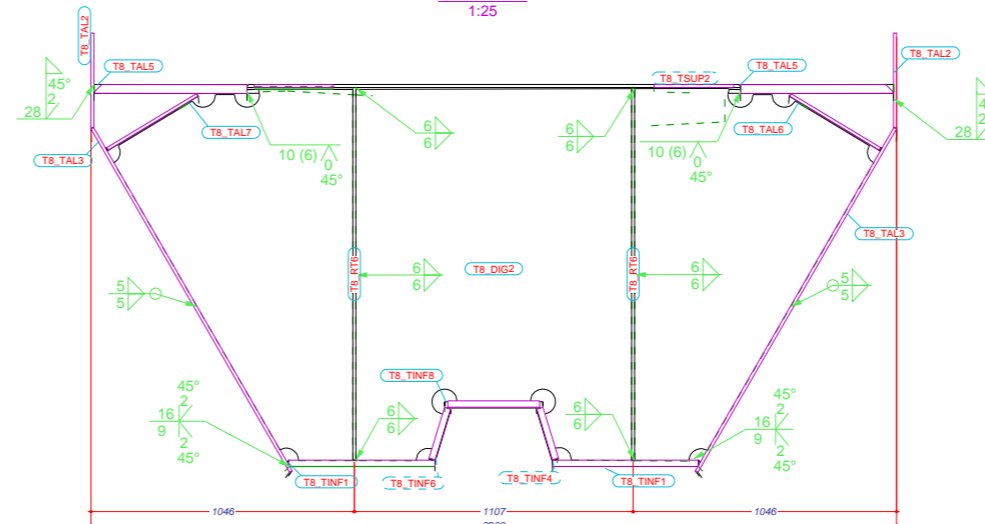


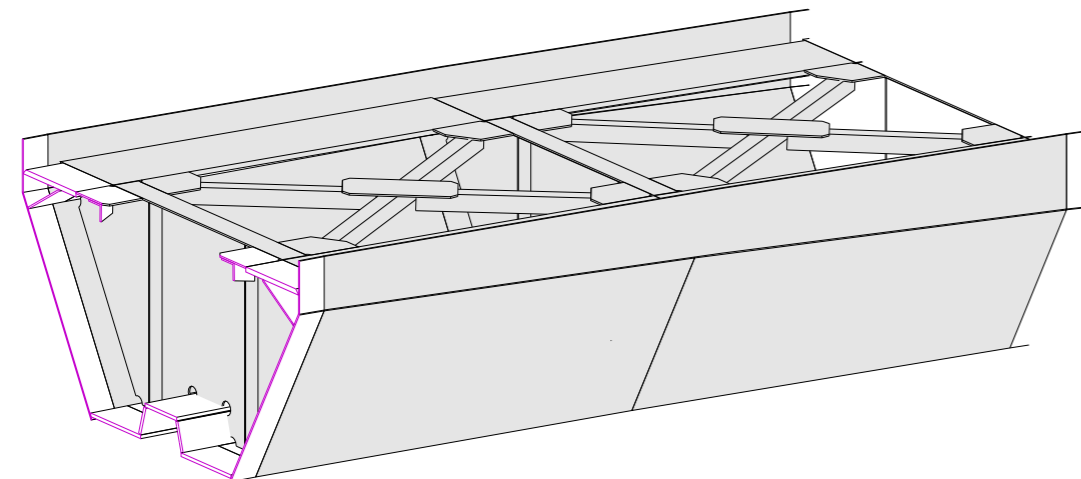
Sección A - A
1:25



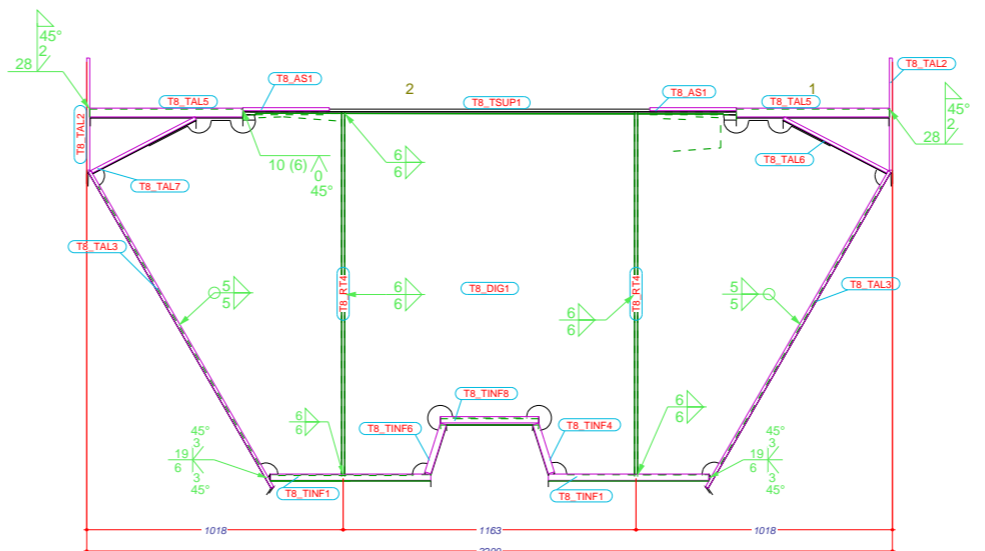
View_07 (3d)
1:25



Sección B - B
1:15

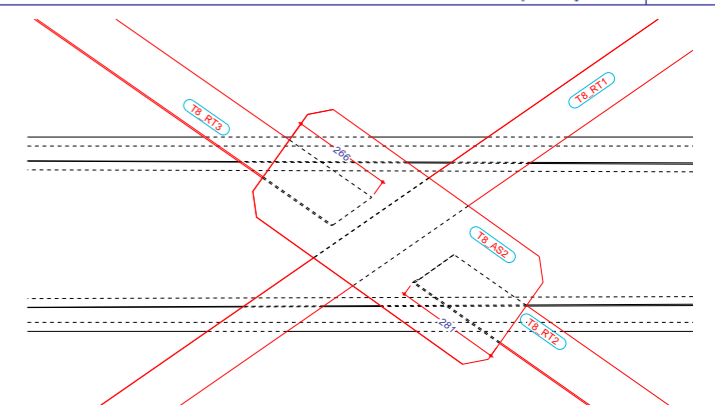


3d
1:25

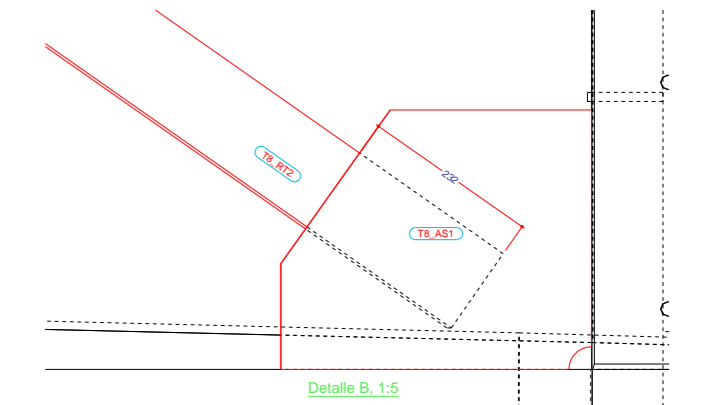


Sección C - C
1:15

| LISTA DE PARTES DE CONJUNTO | | | | | |
|-----------------------------|-------------|-----------|--------|------------------|-----------|
| Conjunto: TR59 | | Número: 1 | | Long. (mm): 6407 | |
| Acabado: | | | | | |
| Parte | Perfil | Material | Número | Long. (mm) | Peso (kg) |
| T8_AS1 | PL12*343 | S355J2G3 | 8 | 412 | 94.9 |
| T8_AS2 | PL12*350 | S355J2G3 | 2 | 766 | 49.6 |
| T8_DIG1 | PL12*1438 | S355J2G3 | 1 | 3110 | 324.9 |
| T8_DIG2 | PL12*1480 | S355J2G3 | 1 | 3018 | 320.6 |
| T8_RT1 | L120*12 | S275JR | 2 | 3042 | 131.3 |
| T8_RT2 | L120*12 | S275JR | 2 | 1391 | 60.0 |
| T8_RT3 | L120*12 | S275JR | 2 | 1437 | 62.0 |
| T8_RT4 | PLACA100*12 | S355J2G3 | 2 | 1444 | 27.1 |
| T8_RT5 | PLACA100*12 | S355J2G3 | 2 | 1442 | 27.1 |
| T8_RT6 | PLACA100*12 | S355J2G3 | 2 | 1483 | 27.9 |
| T8_RT7 | PLACA100*12 | S355J2G3 | 2 | 1481 | 27.8 |
| T8_TAL1 | PL12*1447 | S355J2G3 | 2 | 3096 | 781.6 |
| T8_TAL2 | PL12*519 | S355J2G3 | 2 | 6038 | 503.9 |
| T8_TAL3 | PL12*1576 | S355J2G3 | 2 | 3088 | 856.1 |
| T8_TAL4 | PL35*608 | S355J2G3 | 2 | 3004 | 981.9 |
| T8_TAL5 | PL35*608 | S355J2G3 | 2 | 3001 | 1002.1 |
| T8_TAL6 | PL12*465 | S355J2G3 | 1 | 3016 | 125.0 |
| T8_TAL7 | PL12*465 | S355J2G3 | 1 | 3016 | 125.0 |
| T8_TIN1 | PL25*639 | S355J2G3 | 2 | 3002 | 718.1 |
| T8_TIN2 | PL25*711 | S355J2G3 | 1 | 3001 | 397.6 |
| T8_TIN3 | PL25*218 | S355J2G3 | 1 | 3012 | 124.0 |
| T8_TIN4 | PL25*212 | S355J2G3 | 1 | 3006 | 122.0 |
| T8_TIN5 | PL25*218 | S355J2G3 | 1 | 3012 | 123.9 |
| T8_TIN6 | PL25*212 | S355J2G3 | 1 | 3006 | 122.0 |
| T8_TIN7 | PL25*391 | S355J2G3 | 1 | 3004 | 222.2 |
| T8_TIN8 | PL25*391 | S355J2G3 | 1 | 3001 | 229.8 |
| T8_TIN9 | PL25*711 | S355J2G3 | 1 | 3001 | 397.6 |
| T8_TSUP1 | PL12*200 | S355J2G3 | 1 | 1960 | 36.6 |
| T8_TSUP2 | PL12*200 | S355J2G3 | 1 | 1960 | 36.8 |
| Total por conjunto | | | | | 8060.0 |



Detalle A, 1:10



Detalle B, 1:5

| Nº rev. | Revisión | Descripción de revisión | Fecha revisión |
|---|----------|--|----------------|
| PROYECTO: Construsoft TÍTULO DIBUJO: 3D_TRAMO 8 | | | |
| CONSTRUCTOR: | | Diseñador: diseñador Fecha: 09.04.2025 Escala: Ver vista | |
| MATERIAL: S275JR, SALVO INDICACIÓN CALIDAD TORNILLOS 8.8, SALVO INDICACIÓN | | SOLDADURAS: SEGÚN ANOTACIONES PROYECCIÓN: | |
| | | PROYECTO: número proyecto DIBUJO: G [10] ESTADO: | |
| | | Tamaño: A1 | |