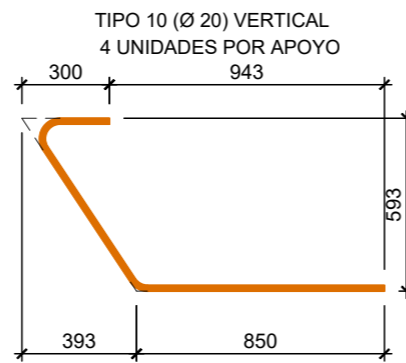
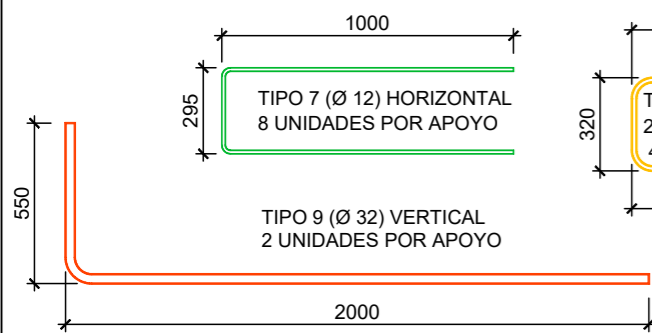
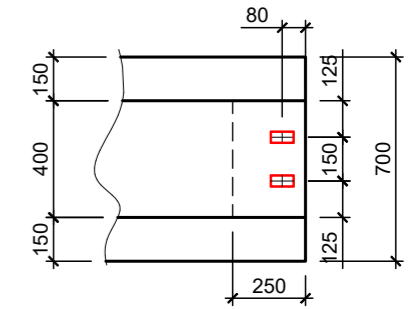
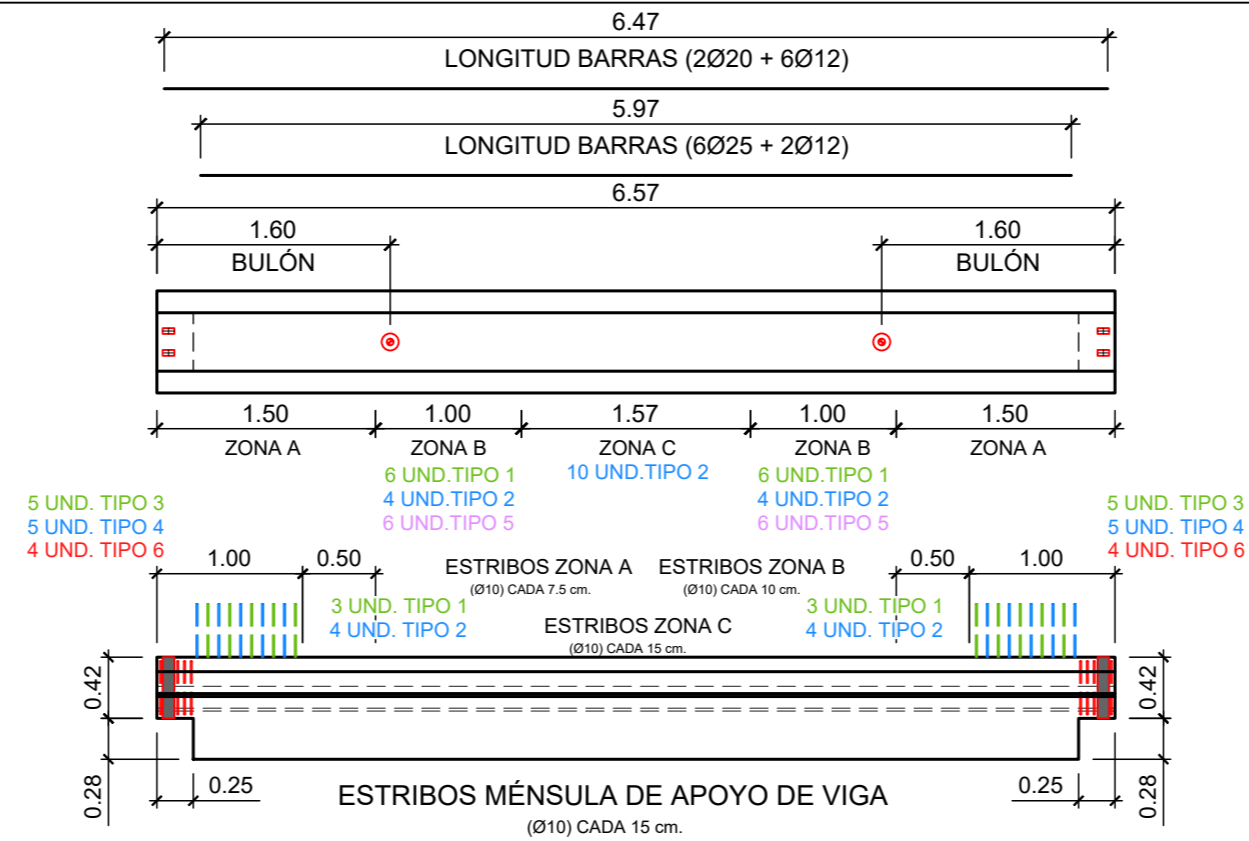
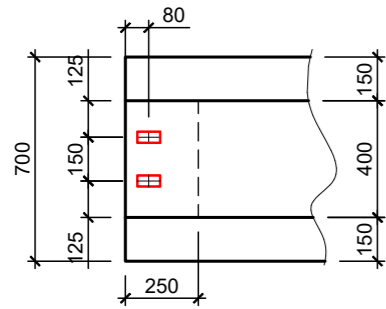
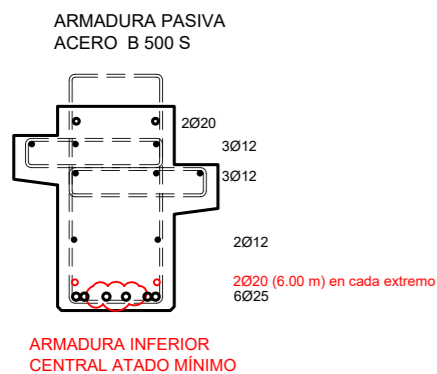
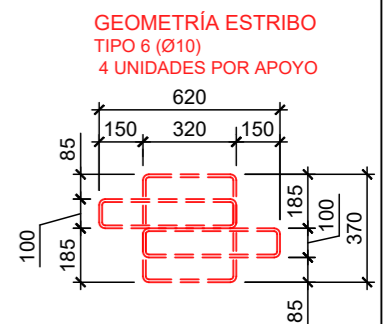
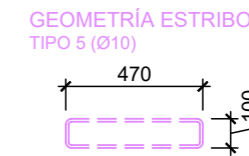
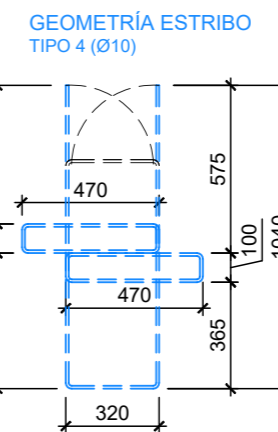
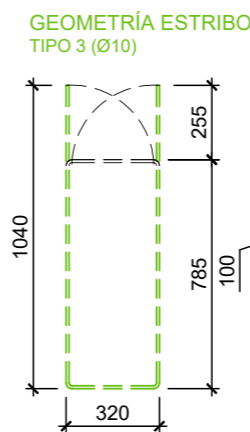
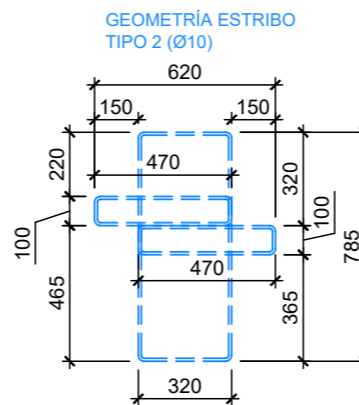
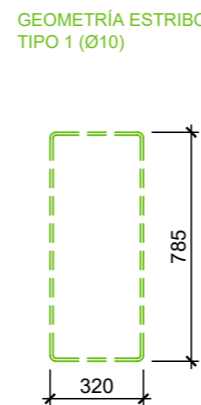
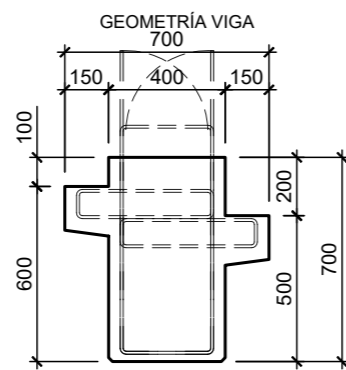
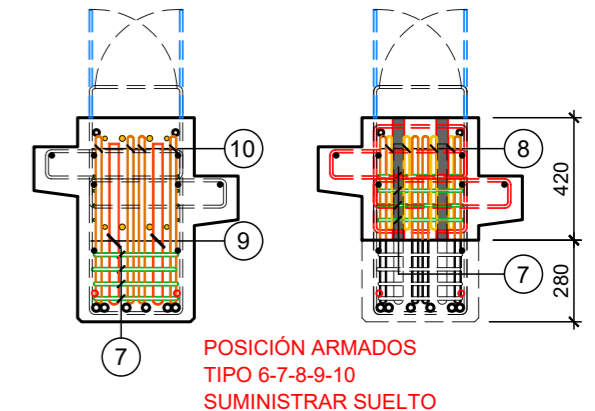
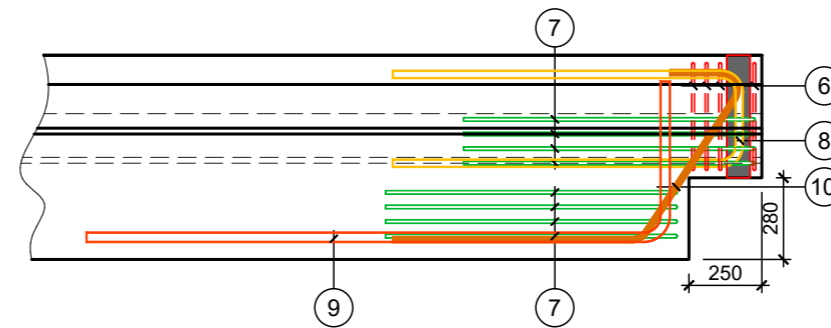


# PISTA - 13



## DETALLE EXTREMOS CON MEDIA MADERA



LONGITUD	VOLUMEN	PESO TN.
6.570	2.15	5.39

HERRAJES	DESCRIPCIÓN	UNIDADES :
▣	PASATUBOS METÁLICO 40.80 mm. (VER DETALLE)	4
⊙	BULÓN CON OJAL 5 Tn.	2

Fecha:	Acabado:	Armadura pasiva		UNIDADES :	NÚMERO :
19/01/2026	HA-40/F/12/XS1	Longitudinal:	Transversal:		
Escala:	Recubrimiento:	B-500-SD	B-500-T	2	VC2-9 VC2-10
	40 mm	Armd. activa:	---		

ENCOFRADO :			
DESENCOFRADO :			
VERIFICACIÓN :	NOMBRE :	FECHA :	OBSERVACIONES :

Expediente:	Ciente:
N2521	JOSÉ DÍAZ GARCÍA S.A.
	Proyecto:
	RESIDENCIAL FUERTEVENTURA

