

PROPPING

For propping instructions refer to Flood Flooring Ltd. Dwg. No. L775 V01 Rev. B

— Indicates the location of the required Prop Line

● Indicates the location of the required Point propping

Point propping should be designed against the beam overturning and placed under the loaded flanges.

Propping during assembly, until the screed is cured

Propping during assembly, until the screed is cured

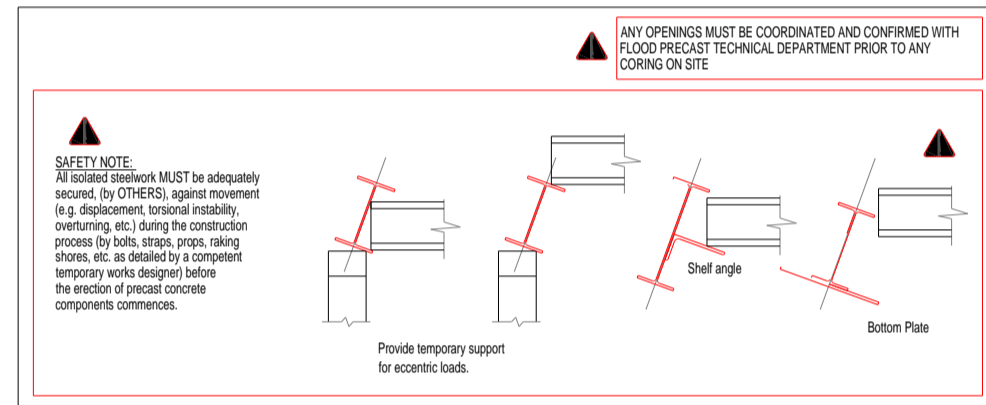
Propping **MUST** be provided along the prop lines shown on plan and must be capable of carrying the loads indicated

PROPLINE LOAD = 35 kN/m (unfactored)

POINT PROP LOAD = 40 kN per prop (unfactored)

The Line Load indicated **DOES NOT** include for any load that may be associated with Back Propping

NOTE:
All steel beams to be propped close to the support.
4m long beams require 2 props each side at each support.



! Please pay attention of order of the elements to be assembled and the support of the steel beams during the temporary phase

- ASSEMBLY SEQUENCE:**
1. B51-SB-05-018
 2. B51-SB-05-016
 3. B51-SB-05-019
1. B51-SB-05-008
 2. B51-SB-05-007
1. B51-SB-05-003
 2. B51-SB-05-006
1. B51-SB-05-014
 2. B51-SB-05-013
 3. B51-SB-05-012
 4. B51-SB-05-011
 5. B51-SB-05-010

PROPPINGS
max spacing 1.0 m or propline max 25 kN/m unfactored for each line.

NOTE:
Remove props before wall assembly on beam.

NOTE:
Temporary prop
Remove prop after connecting to the perpendicular beam.

NOTE:
Remove props before wall assembly on beam.

PROPPINGS
max spacing 1.0 m or propline max 25 kN/m unfactored for each line.

Orientation mark

NOTE:
Steel elements to be fireproofed by main contractor on site

PRECAST

www.precast.pl
contact@precast.pl
+48 722 286 990

Drawing title:
Fifth Floor Steel beams assy drawing ***
Block 5