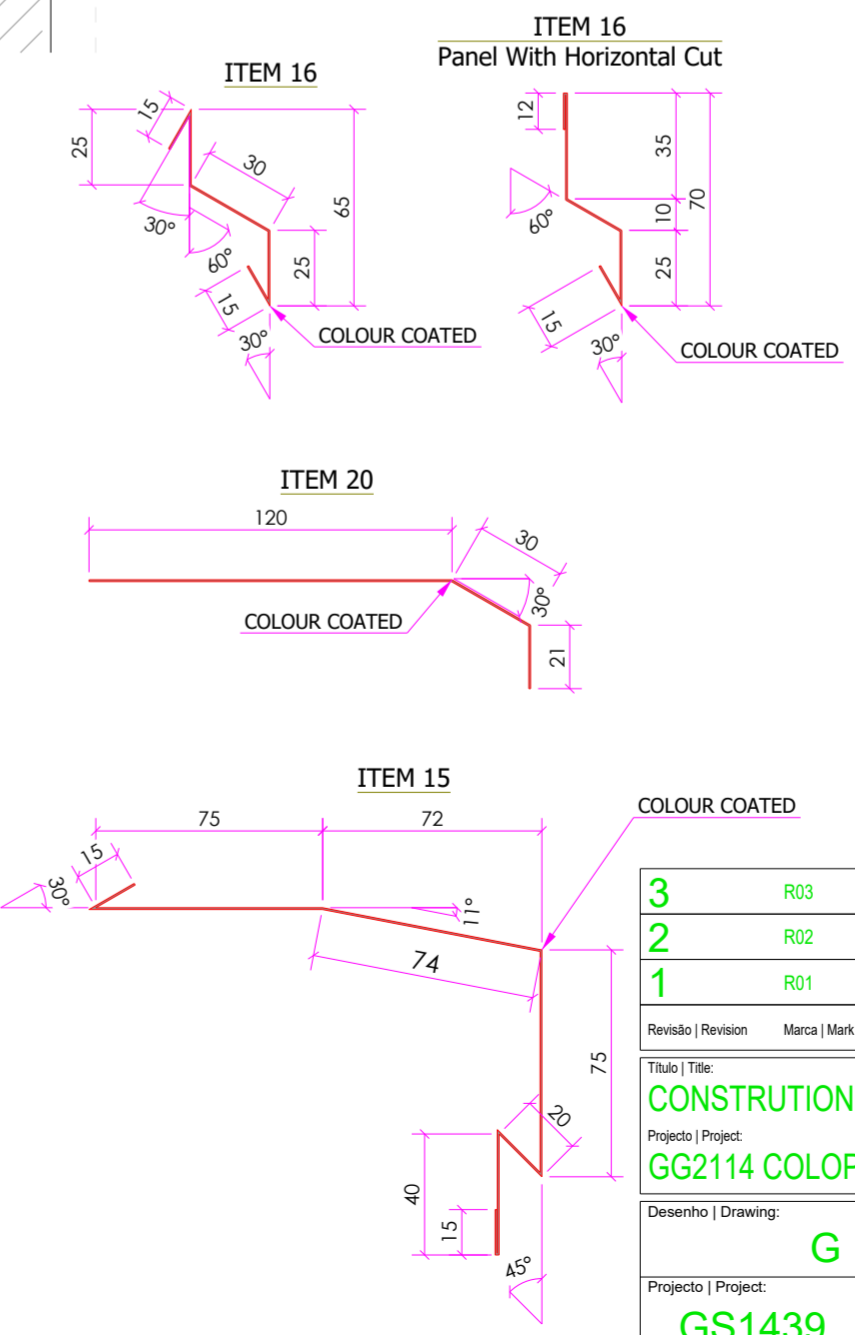
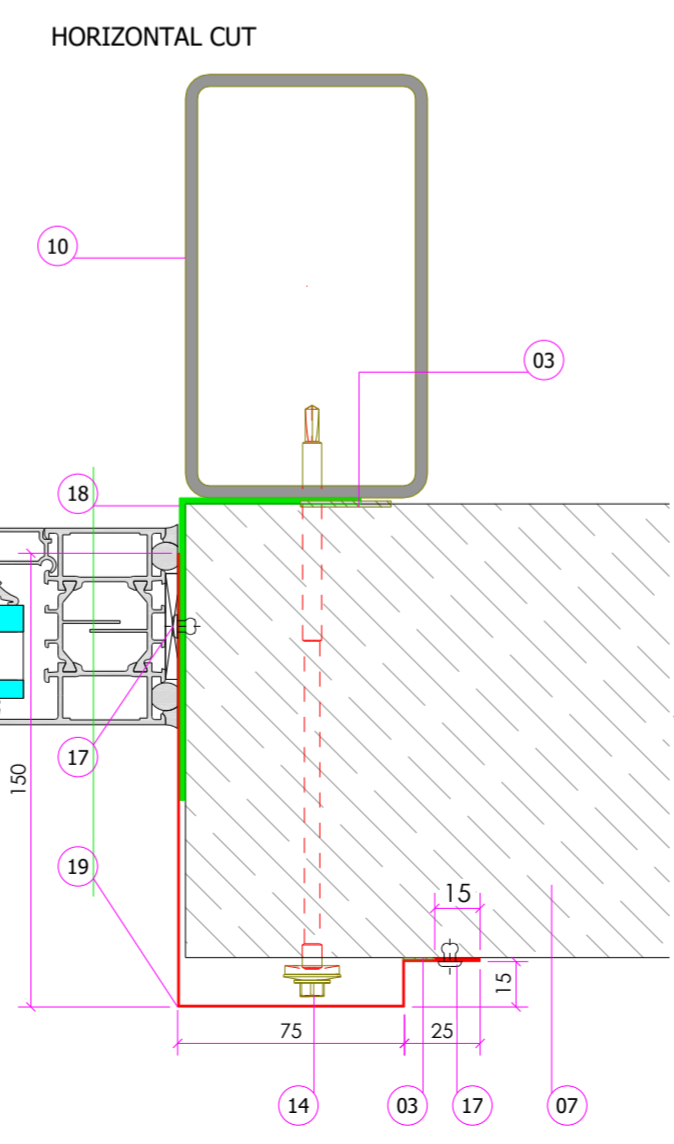
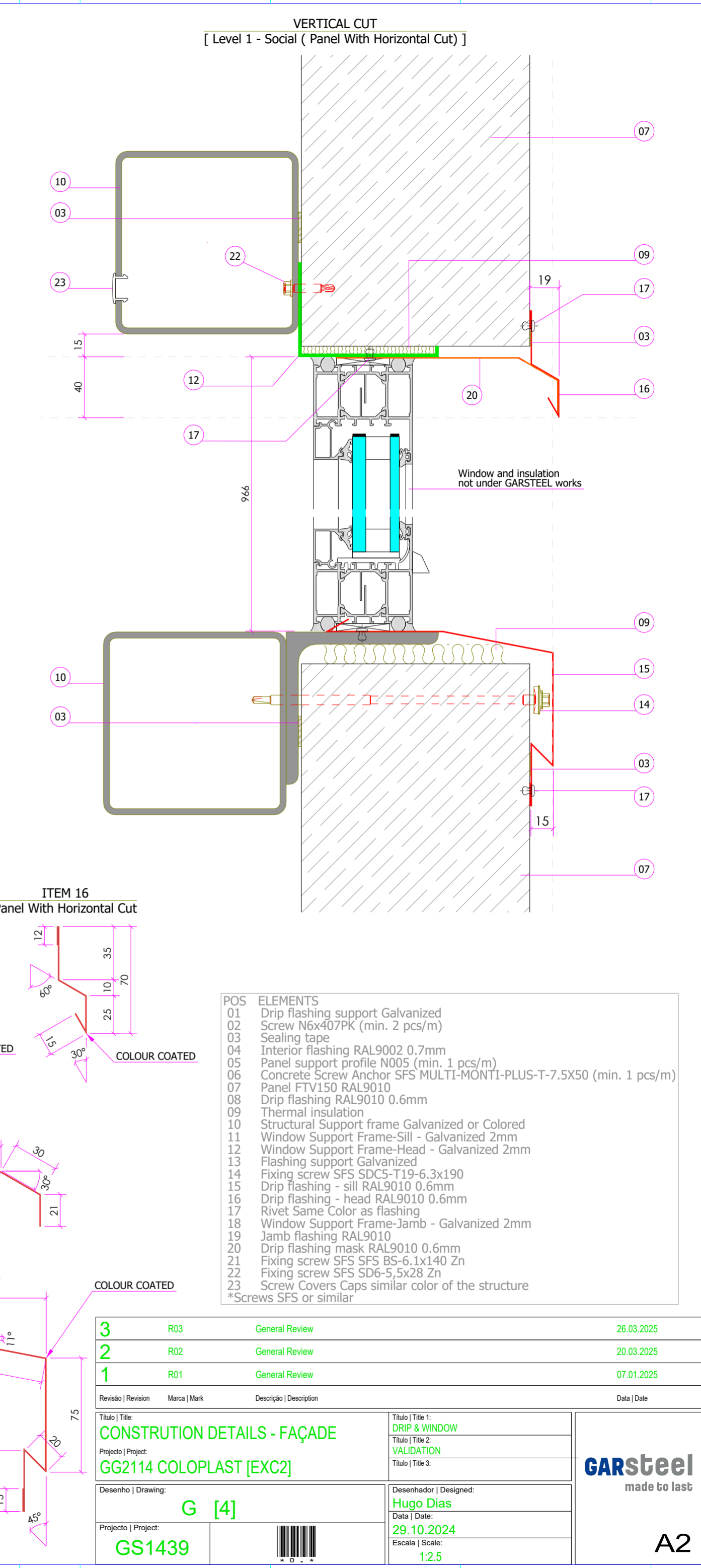
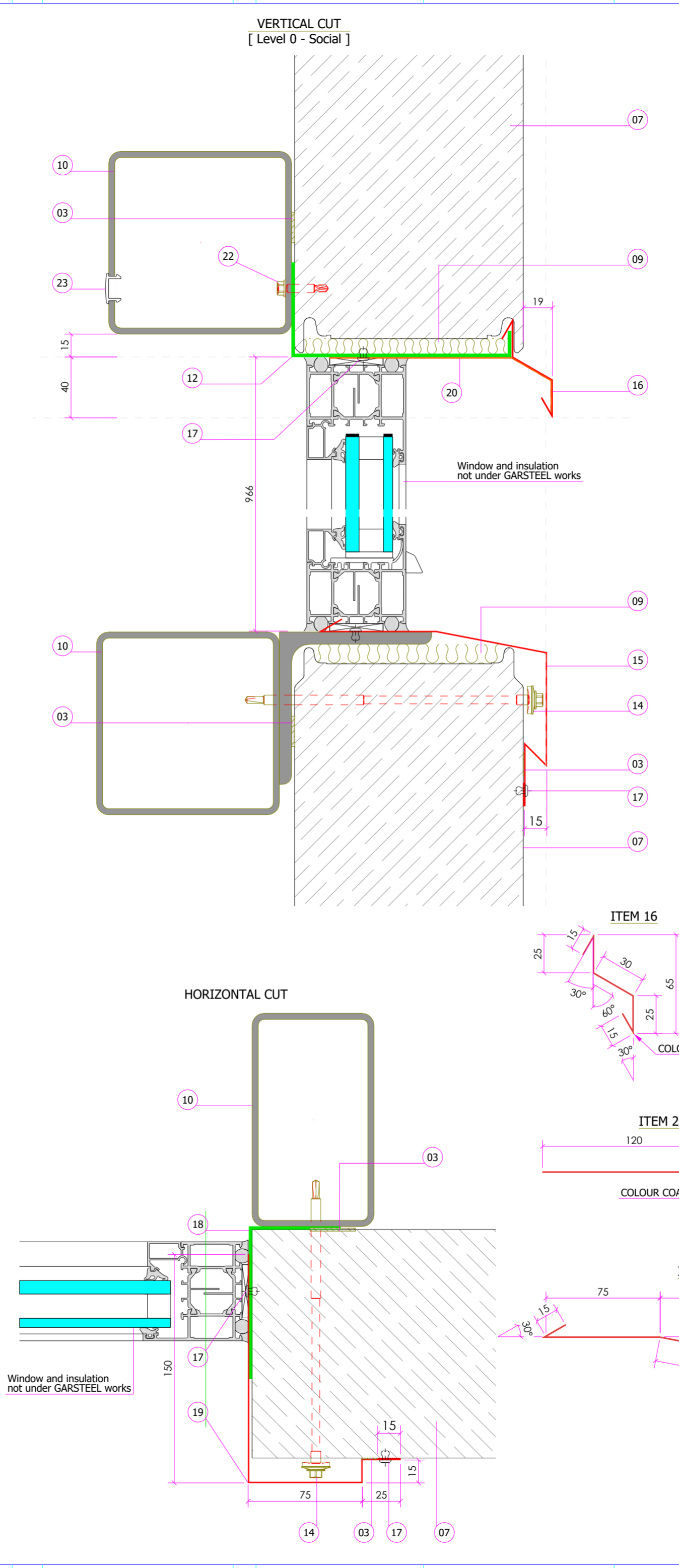
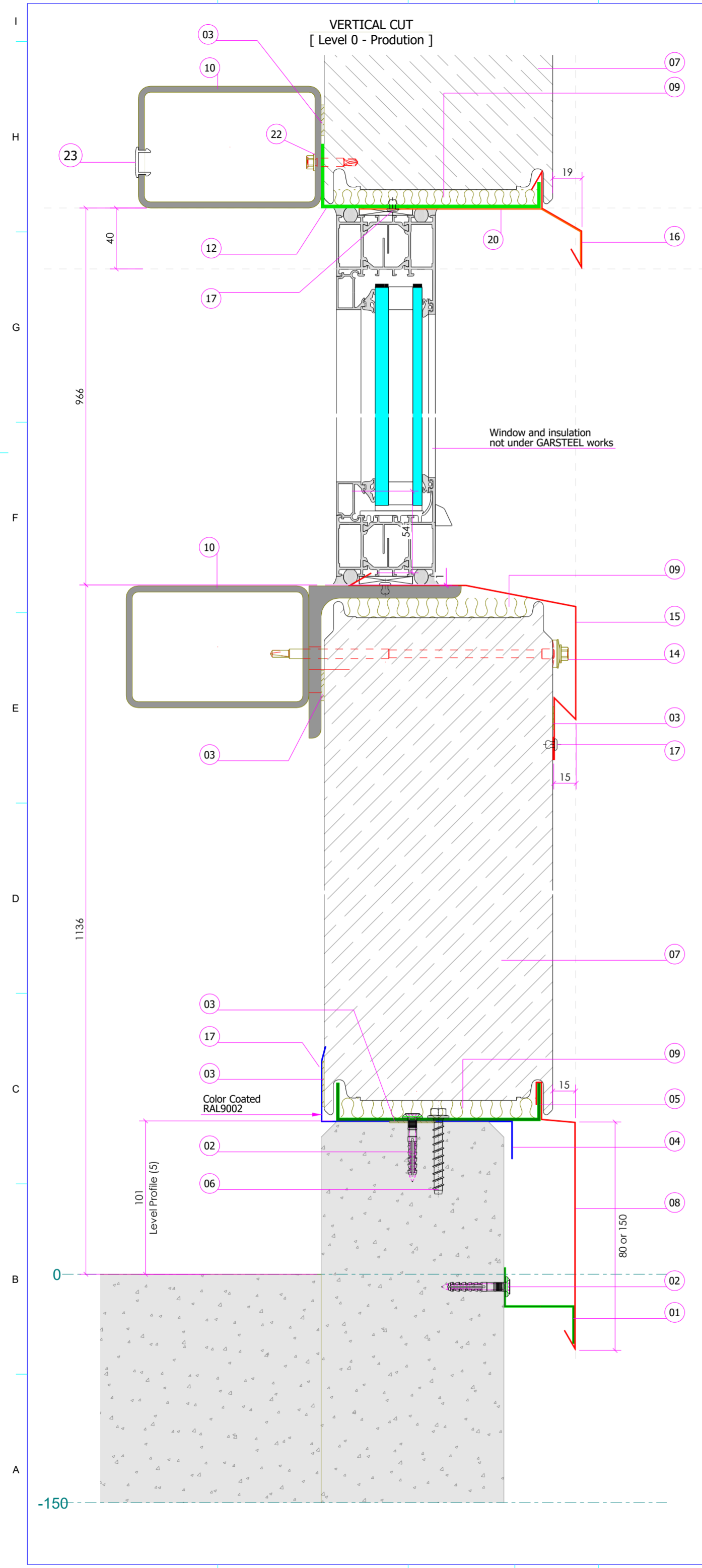


ESTE DOCUMENTO NÃO PODE SER REPRODUZIDO, INTEGRAL OU PARCIALMENTE, POR QUALQUER MEIO, INCLUINDO FOTOCOPIA, SEM AUTORIZAÇÃO



POS	ELEMENTS
01	Drip flashing support Galvanized
02	Screw N6x407PK (min. 2 pcs/m)
03	Sealing tape
04	Interior flashing RAL9002 0.7mm
05	Panel support profile N005 (min. 1 pcs/m)
06	Concrete Screw Anchor SFS MULTI-MONTI-PLUS-T-7.5X50 (min. 1 pcs/m)
07	Panel FTV150 RAL9010
08	Drip flashing RAL9010 0.6mm
09	Thermal insulation
10	Structural Support frame Galvanized or Colored
11	Window Support Frame-Sill - Galvanized 2mm
12	Window Support Frame-Head - Galvanized 2mm
13	Flashing support Galvanized
14	Fixing screw SFS SDC5-T19-6.3x190
15	Drip flashing - sill RAL9010 0.6mm
16	Drip flashing - head RAL9010 0.6mm
17	Rivet Same Color as flashing
18	Window Support Frame-Jamb - Galvanized 2mm
19	Jamb flashing RAL9010
20	Drip flashing mask RAL9010 0.6mm
21	Fixing screw SFS SFS BS-6.1x140 Zn
22	Fixing screw SFS SD6-5.5x28 Zn
23	Screw Covers Caps similar color of the structure
*Screws SFS or similar	

Revisão Revision	Marca Mark	Descrição Description	Data Date
3	R03	General Review	26.03.2025
2	R02	General Review	20.03.2025
1	R01	General Review	07.01.2025

Título Title: CONSTRUCTION DETAILS - FAÇADE		Título Title 1: DRIP & WINDOW	
Projeto Project: GG2114 COLOPLAST [EXC2]		Título Title 2: VALIDATION	
Desenho Drawing: G [4]		Desenhador Designed: Hugo Dias	
Projeto Project: GS1439		Data Date: 29.10.2024	
		Escala Scale: 1:2.5	