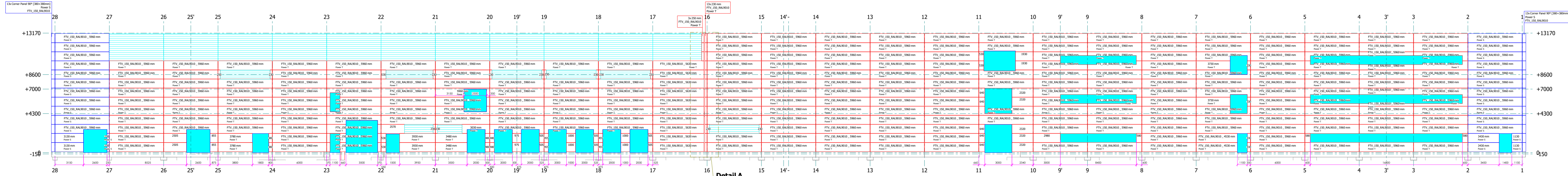
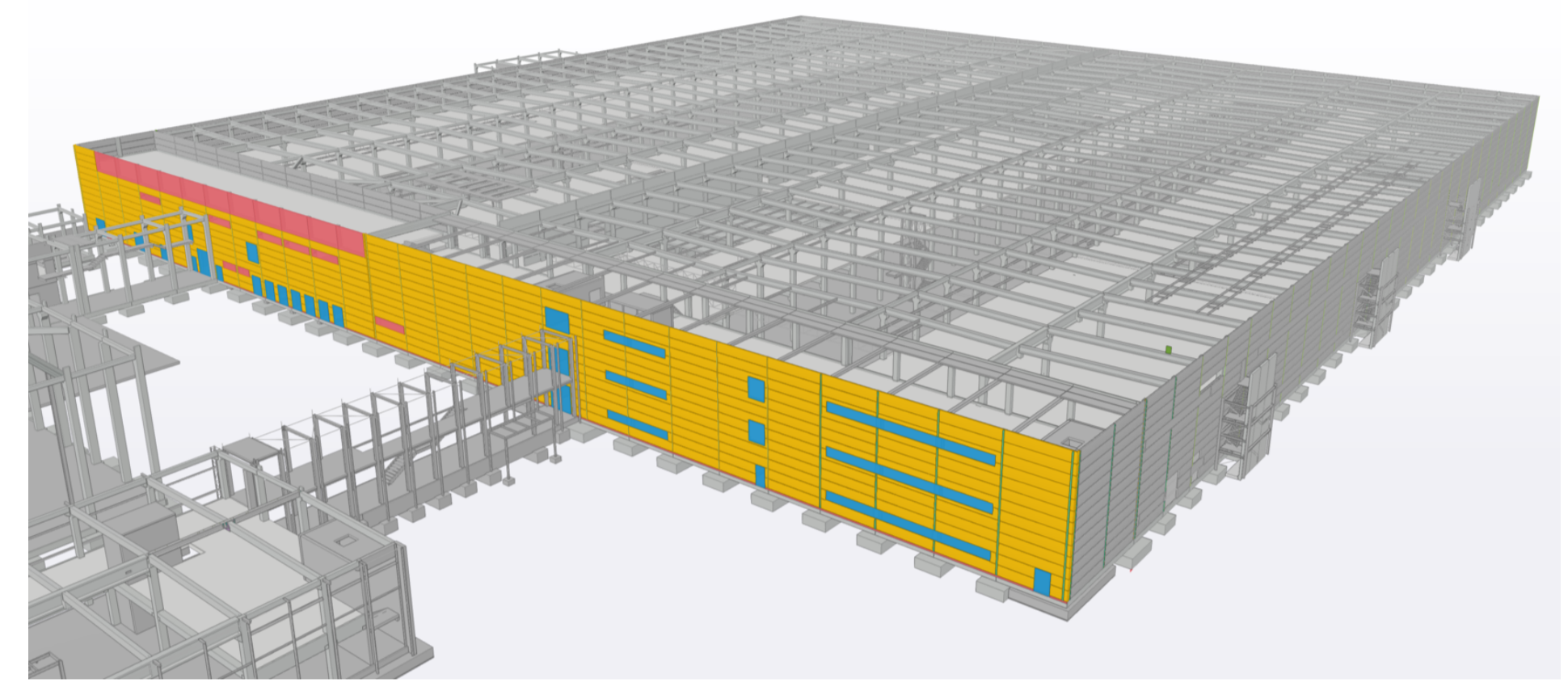
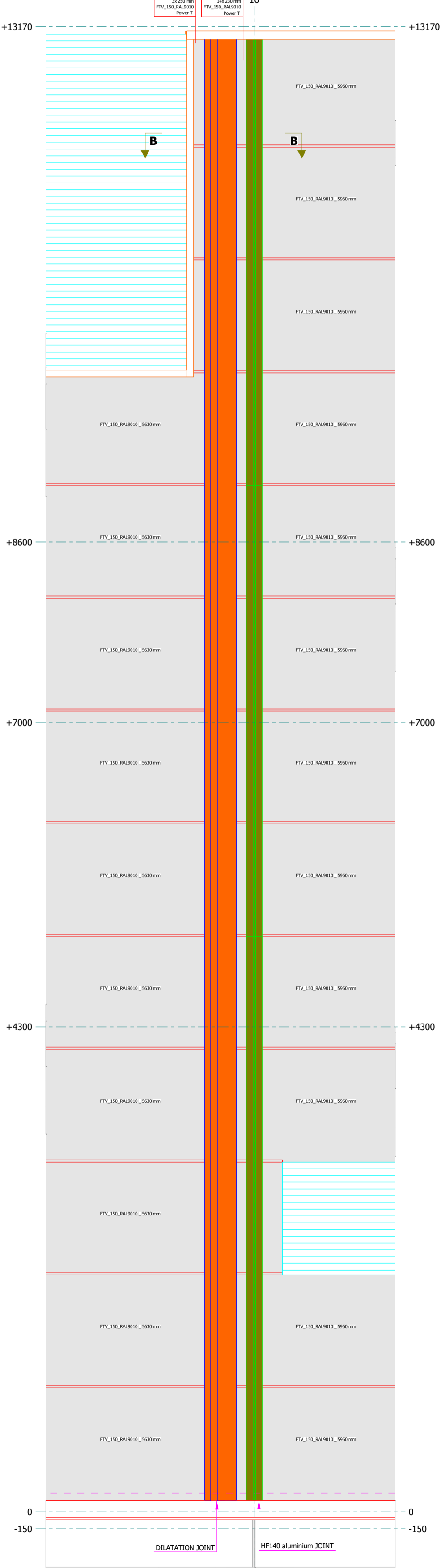


**A - A | WEST ELEVATION**  
1:225

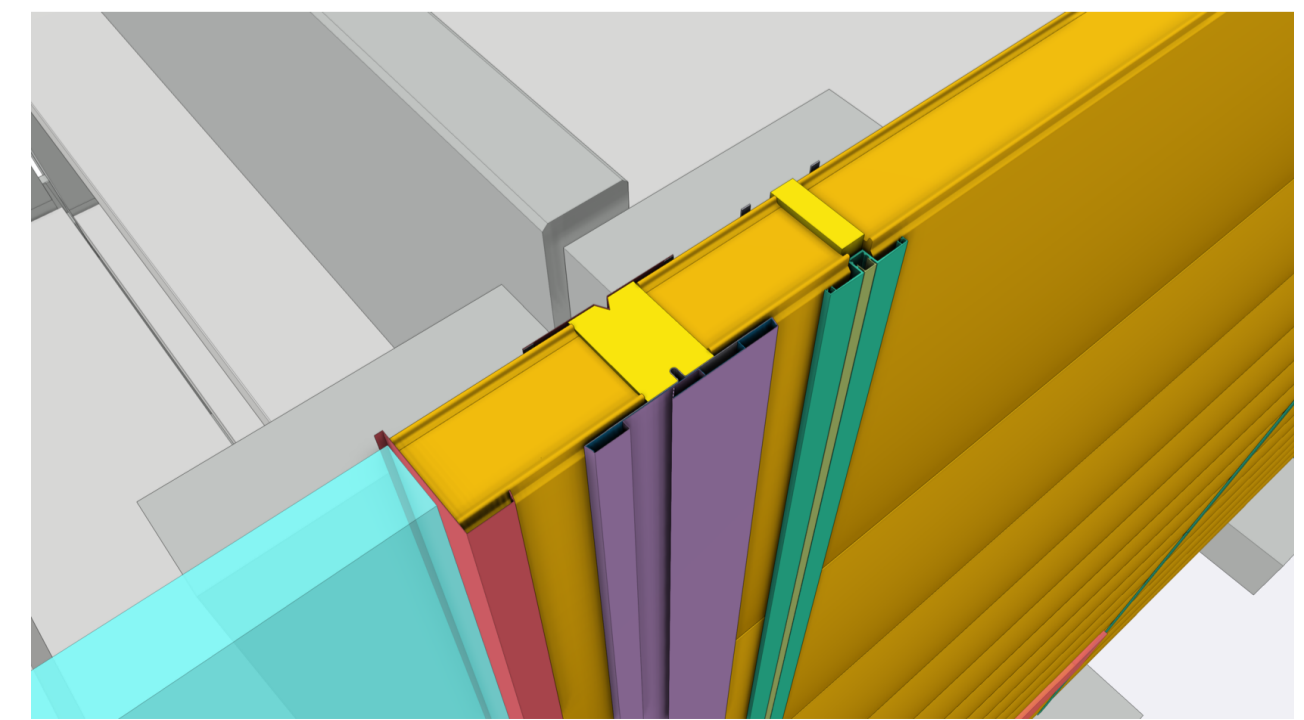
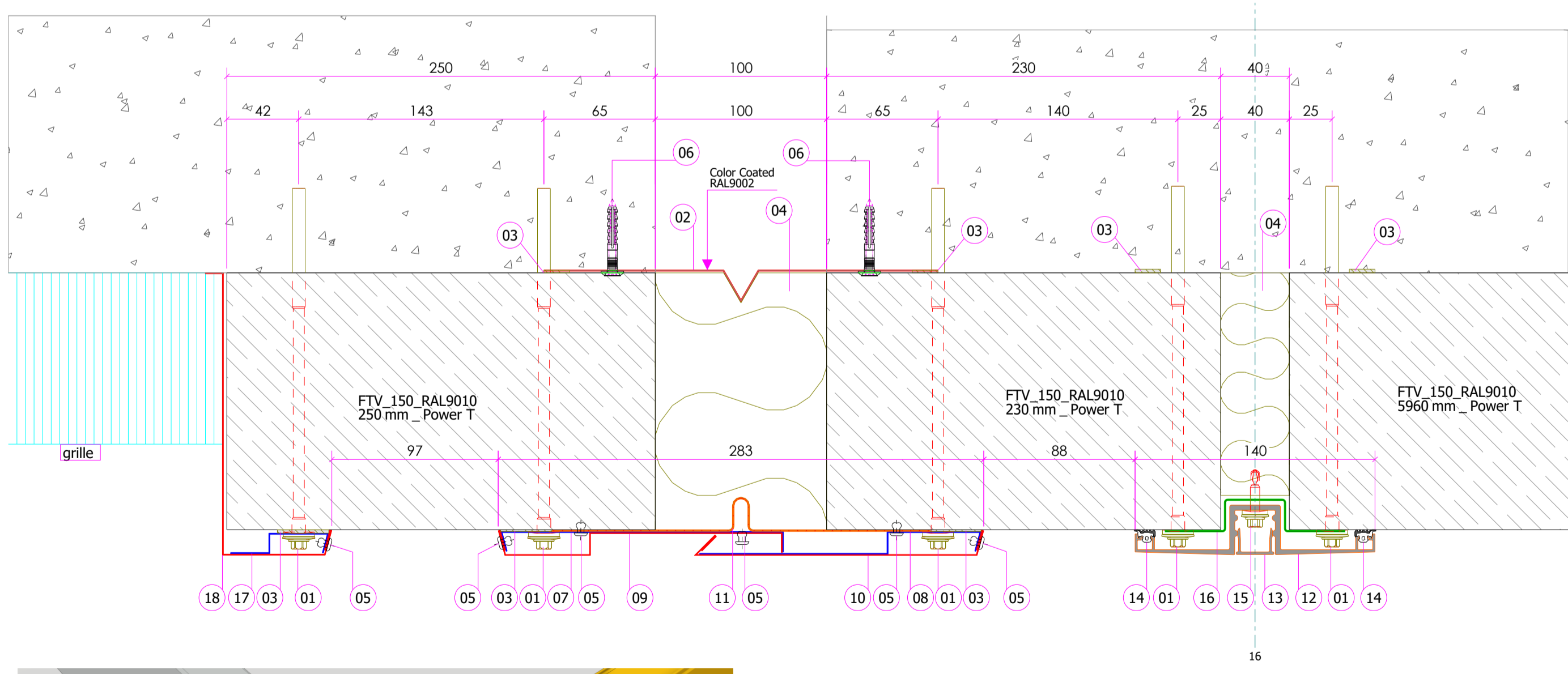


**FACADE PANEL TYPE:**

- Trimotern Power T FTV-150/1000 HS  
0,60 mm PVDF 25 µm R9010 / 0,70 mm SP 25 µm R9002
- Trimotern Power S FTV-150/1000 MS  
0,60 mm PVDF 25 µm R9010 / 0,70 mm SP 25 µm R9002



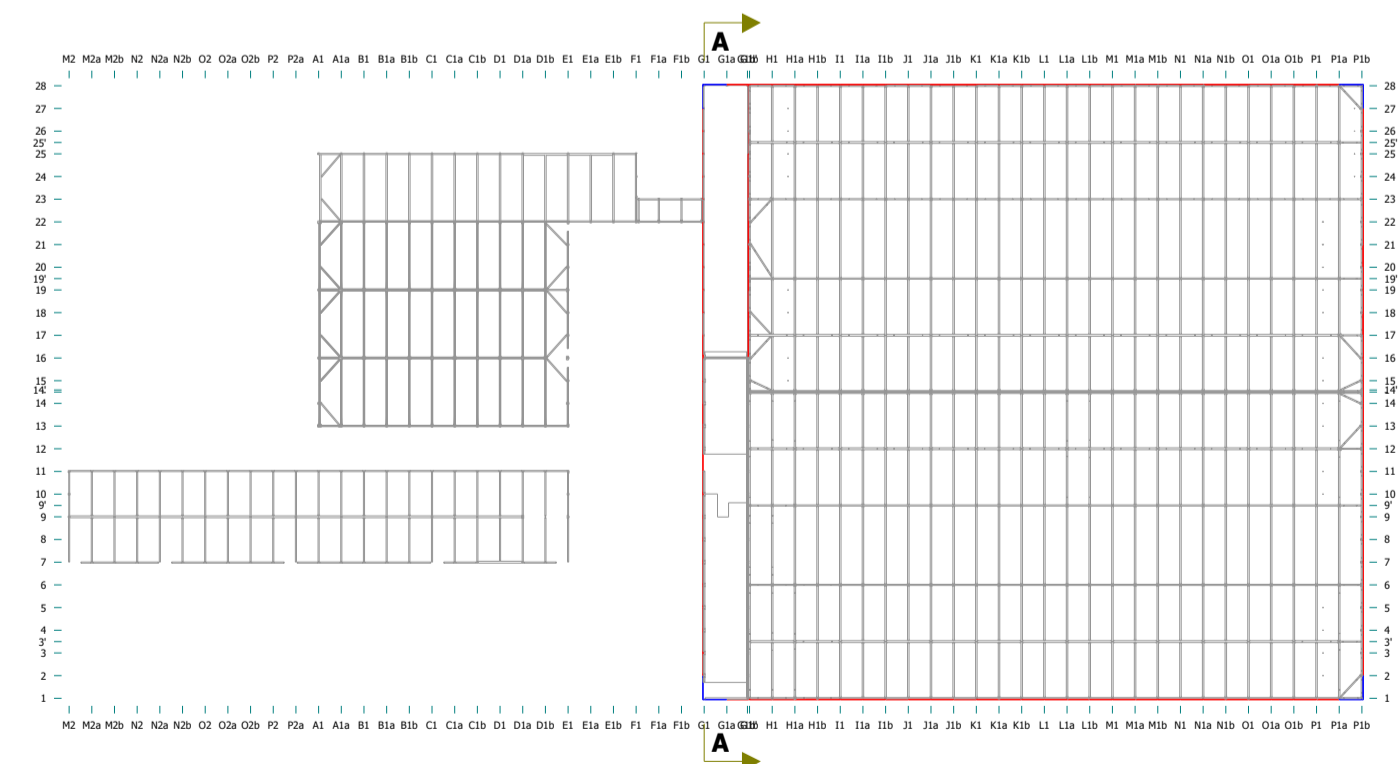
**B - B | JOINTS HORIZONTAL CUT**  
1:2,5



**POS ELEMENTS**

- Concrete screw SFS MDC-S19-7,5x205
- Dilatation flashing - Internal
- Sealing tape
- Thermal insulation
- Rivet RAL9010
- Screw N6x407PK
- Flashing support A Galvanized
- Flashing support B Galvanized
- Dilatation flashing - external A RAL9010 0.6mm
- Dilatation flashing - external B RAL9010 0.6mm
- Neoprene membrane
- HF140140 aluminium fixing profile
- HF102/2 aluminium filler profile
- EPDM - gasket CX290T
- Fixing screw SFS SD6-T16-5,5x28 Zn
- Fixing profile 105x100x19 - Galvanized (2 pcs./m facade joint)
- Flashing support Galvanized
- Jamb flashing RAL9010 0.6mm

\*Screws SFS or similar



**PLAN | LEVEL +13170**  
Esc. 1:2000

**Detail A | JOINTS**  
1:30

Revisão	Marca	Descrição	Data
Título: <b>FACADE PANEL Z01</b>			Título 1: ELEVATION_WEST
Projeto: <b>GG2114 COLOPLAST [EXC2]</b>			Título 2: VALIDATION
Desenho: <b>G [8]</b>			Título 3:
Projeto: <b>GS1439</b>			Desenhador: <b>Hugo Dias</b>
			Data: <b>19.11.2024</b>
			Escala: <b>1:25 1:30 1:225</b>