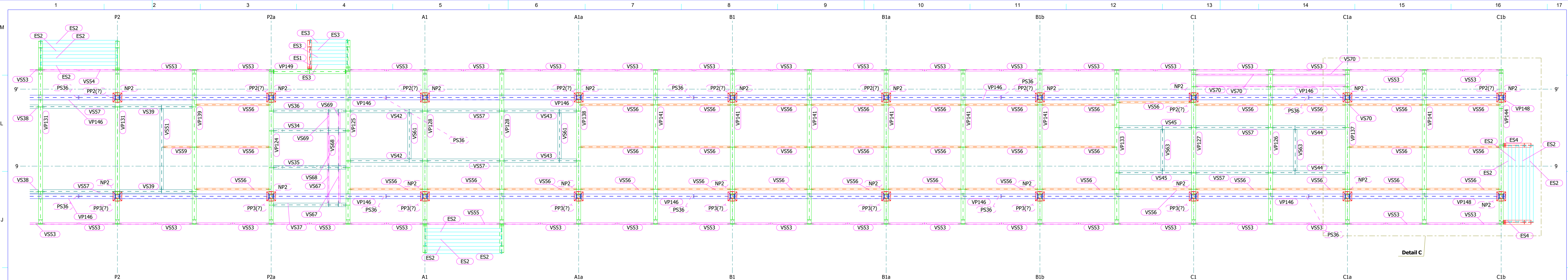
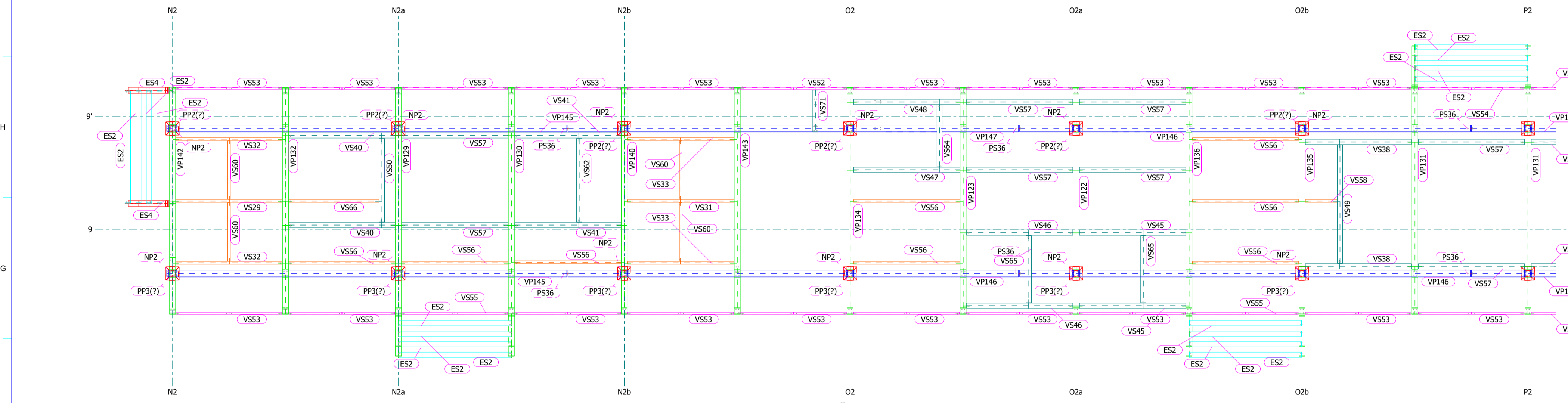


ESTE DOCUMENTO NÃO PODE SER REPRODUZIDO, INTEGRAL OU PARCIALMENTE, POR QUALQUER MEIO, INCLUINDO FOTOCOPIA, SEM AUTORIZAÇÃO

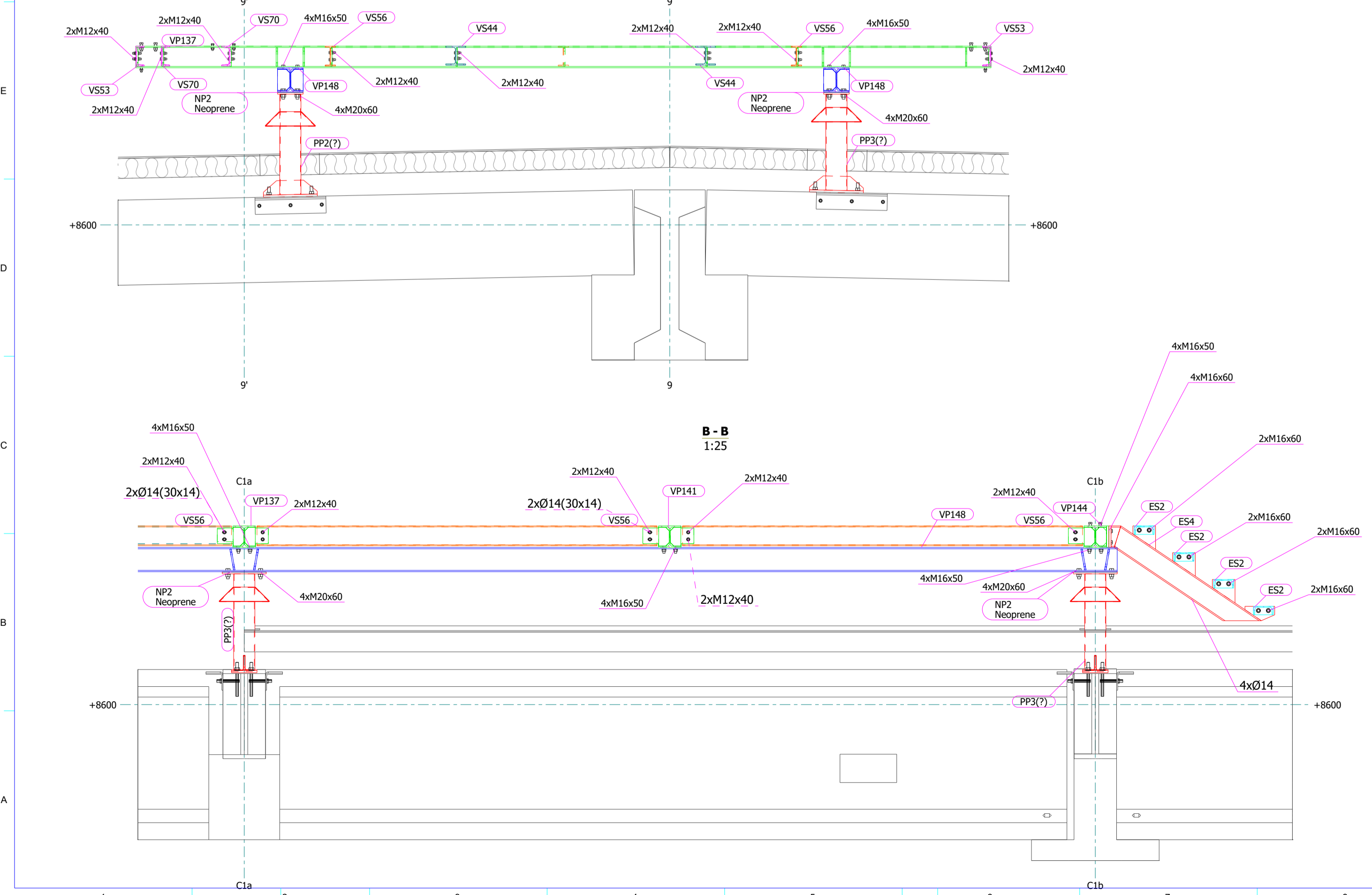


Detail A  
1:75

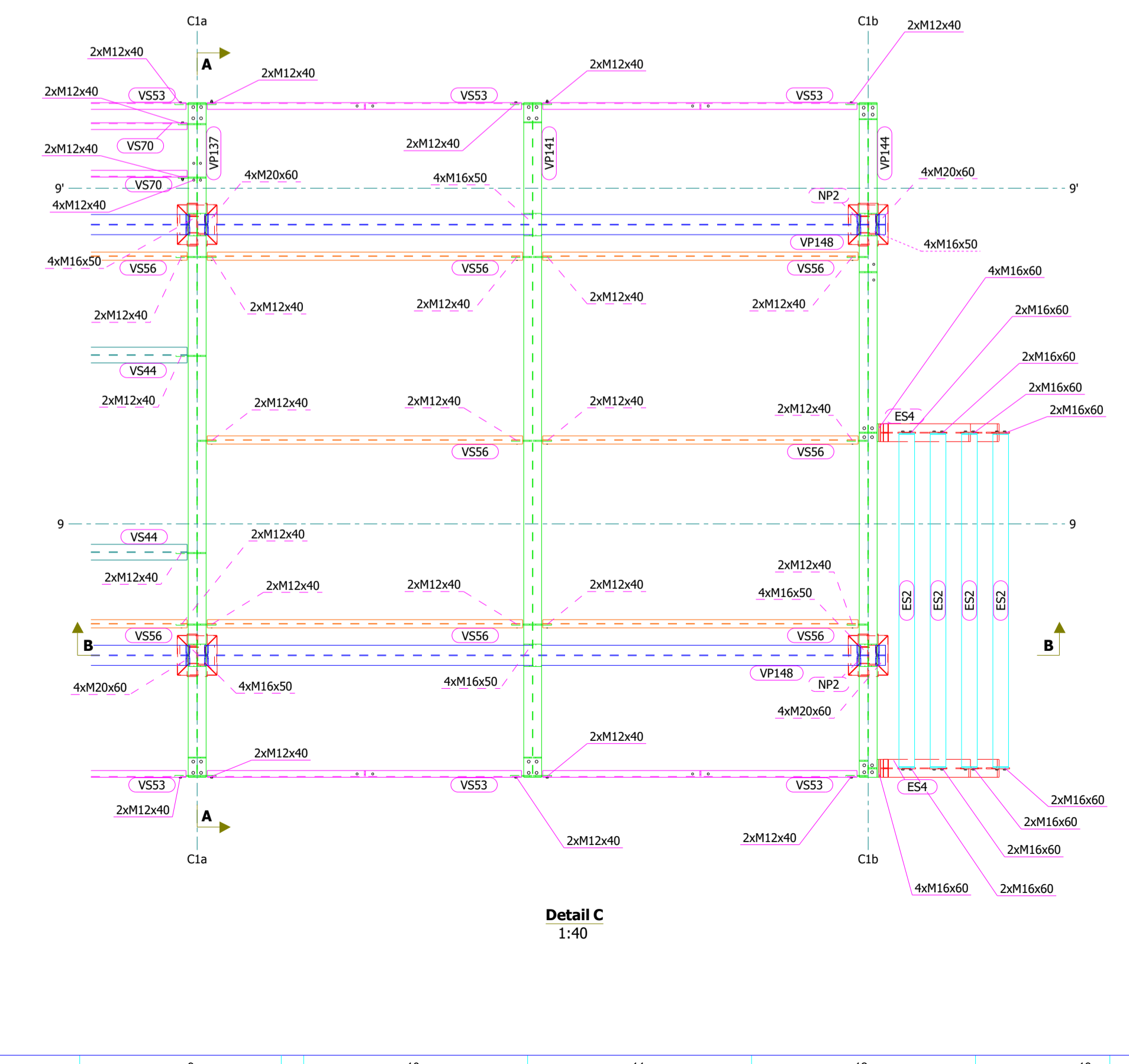


Detail B  
1:75

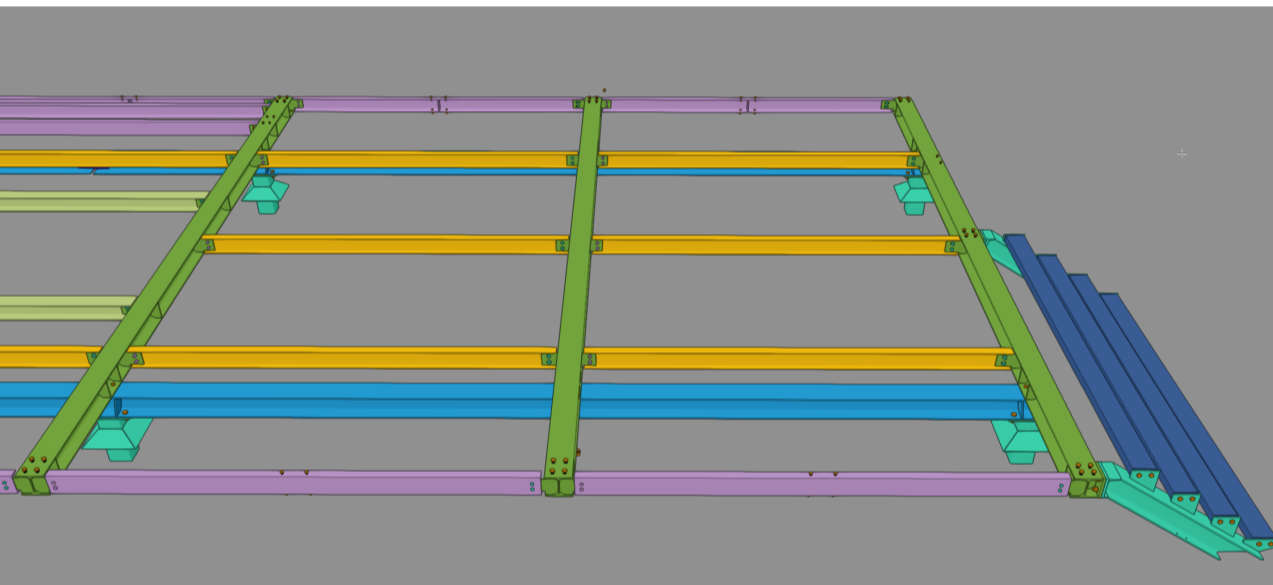
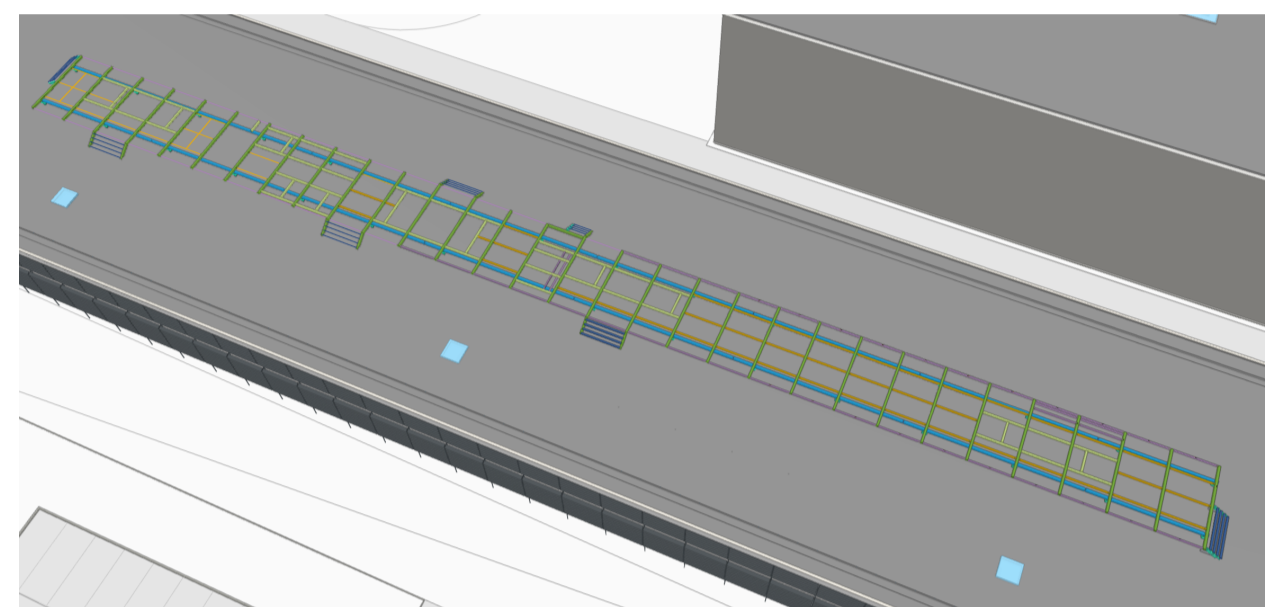
A - A  
1:25



B - B  
1:25

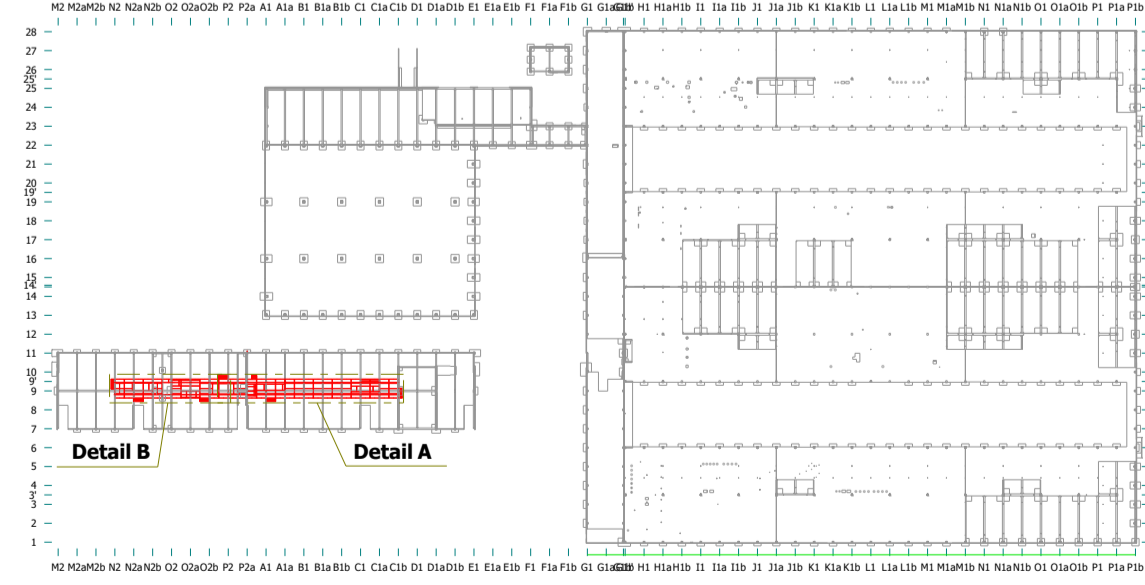


Detail C  
1:40



Conjunto	Qt.	Perfil	Comp.(mm)
ES1	1	HEA160	1329
ES2	24	UPN140	2990
ES3	4	UPN140	1448
ES4	4	HEA160	1319
NP2	32	PL3X180	310
PS36	14	PL10X120	280
VP122	1	HEA160	6030
VP123	1	HEA160	6030
VP124	1	HEA160	6030
VP125	1	HEA160	7215
VP126	1	HEA160	6030
VP127	1	HEA160	6030
VP128	2	HEA160	7180
VP129	1	HEA160	7180
VP130	1	HEA160	7180
VP131	2	HEA160	7180
VP132	1	HEA160	6030
VP133	1	HEA160	6030
VP134	1	HEA160	6030
VP135	1	HEA160	7180
VP136	1	HEA160	7180
VP137	1	HEA160	6030
VP138	1	HEA160	6030
VP139	1	HEA160	6030
VP140	1	HEA160	6030
VP141	7	HEA160	6030
VP142	1	HEA160	6030
VP143	1	HEA160	6030
VP144	1	HEA160	6030
VP145	2	HEA180	10625
VP146	11	HEA180	11968
VP147	1	HEA180	11969
VP148	2	HEA180	7655
VP149	1	HEA160	2808
VS29	1	IPE140	2820
VS31	1	IPE140	2820
VS32	2	IPE140	2820
VS33	2	IPE140	2820
VS34	1	HEA140	2820
VS35	1	HEA140	2820
VS36	1	HEA140	2820
VS37	1	HEA140	2820
VS38	2	HEA140	2820
VS39	2	HEA140	2820
VS40	2	HEA140	2819
VS41	2	HEA140	2820
VS42	2	HEA140	2819
VS43	2	HEA140	2820
VS44	2	HEA140	2819
VS45	4	HEA140	2820
VS46	2	HEA140	2820
VS47	1	HEA140	2820
VS48	1	HEA140	2820
VS49	1	HEA140	3142
VS50	1	HEA140	2222
VS51	1	HEA140	3142
VS52	1	UPN140	2809
VS53	54	UPN140	2810
VS54	1	UPN140	2809
VS55	3	UPN140	2810
VS56	47	IPE140	2819
VS57	12	HEA140	2820
VS58	1	IPE140	837
VS59	1	IPE140	1102
VS60	4	IPE140	1549
VS61	2	HEA140	1782
VS62	1	HEA140	2222
VS63	2	HEA140	1602
VS64	1	HEA140	1642
VS65	1	HEA140	1780
VS66	1	IPE140	2391
VS67	2	UPN140	1298
VS68	2	UPN140	1273
VS69	2	UPN140	610
VS70	4	UPN140	2820
VS71	1	HEA140	1109
<b>Total</b>	<b>306</b>		

Standard	Obra/Oficina	Tamanho	Qt.	Comentário
<b>Parafusos</b>				
EN15048-4017-8-SB	Site	BOLT 20X60	128	Galvanizado
EN15048-4017-8-SB	Site	BOLT 16X60	140	Galvanizado
EN15048-4017-8-SB	Site	BOLT 16X60	504	Galvanizado
EN15048-4017-8-SB	Site	BOLT 16X40	88	Galvanizado
EN15048-4017-8-SB	Site	BOLT 12X40	1154	Galvanizado
<b>Porcas</b>				
EN-ISO4032	Site	M20	128	Galvanizado
EN-ISO4032	Site	M16	732	Galvanizado
EN-ISO4032	Site	M12	1154	Galvanizado
<b>Anilhas</b>				
EN-ISO7089	Site	M20	128	Galvanizado
EN-ISO7089	Site	M16	732	Galvanizado
EN-ISO7089	Site	M12	1154	Galvanizado
<b>Total</b>			<b>306</b>	



PLAN | LEVEL 0  
Esc. 1:2400

Revisão / Revision	Marca / Mark	Descrição / Description	Data / Date
Título / Title		Título / Title	
ADMINISTRATIVE - MECHANICAL		EQUIPMENT SUPPORT (CHASSIS)	
Projeto / Project		Projeto / Project	
GG2114 COLOPLAST [EXC2]		SITE ASSEMBLY	
Desenho / Drawing		Desenhador / Designed	
G [155]		Hugo Dias	
Projeto / Project		Emissão / Issue	
GS1439		30.09.2025	
		Escala / Scale	
		1:25 1:40 1:75	